

À des fins de recherche uniquement

Anticorps Polyclonal de lapin anti-BCR



Numéro de catalogue: 22585-1-AP

Phare

1 Publications

Informations de base

Numéro de catalogue:
22585-1-AP

Taille:
150ul, Concentration: 700 µg/ml by Nanodrop and 453 µg/ml by Bradford method using BSA as the standard;

Hôte:
Lapin

Isotype:
IgG

Immunogen Catalog Number:
AG18281

Numéro d'acquisition GenBank:
BC066122

Identification du gène (NCBI):
613

Nom complet:
breakpoint cluster region

MW calculé
143 kDa

MW observés:
150-160 kDa

Méthode de purification:
Purifié par affinité contre l'antigène

Dilutions recommandées:
WB 1:500-1:2000
IP 0.5-4.0 ug for IP and 1:500-1:2000 for WB
IHC 1:20-1:200
IF 1:50-1:500

Applications

Applications testées:
FC, IF, IHC, IP, WB, ELISA

Demandes citées:
IHC, WB

Spécificité de l'espèce:
Humain, singe

Espèces citées:
Humain, souris

Remarque-IHC: il est suggéré de démasquer l'antigène avec un tampon de TE buffer pH 9,0; (*) A défaut, le démasquage de l'antigène peut être effectué avec un tampon citrate pH 6,0.

Contrôles positifs:

WB : cellules Y79, cellules COS-7, cellules HEK-293, cellules HeLa, cellules K-562, cellules MCF-7

IP : cellules HEK-293,

IHC : tissu cutané humain,

IF : cellules HeLa, cellules HepG2

Informations générales

The Bcr gene, mapping on chromosome22, was originally identified by its presence in the chimeric Bcr-Abl oncogene. The Bcr gene encodes for the break point cluster region protein(Bcr). Although the BCR-ABL fusion protein has been extensively studied, the function of the normal BCR gene product is not clear. The protein has serine/threonine kinase activity and is a GTPase-activating protein for RAC1 and CDC42. A chromosomal aberration involving BCR has been found in patients with chronic myeloid leukemia.

Publications notables

Autrice	Pubmed ID	Journal	Application
Yongtao Xiao	34190380	Neurogastroenterol Motil	WB,IHC

Stockage

Stockage:
Stocker à -20°C. Stable pendant un an après l'expédition.

Tampon de stockage:
PBS avec azoture de sodium à 0,02 % et glycérol à 50 % pH 7,3
L'aliquotage n'est pas nécessaire pour le stockage à -20C

*** Les 20ul contiennent 0,1% de BSA.

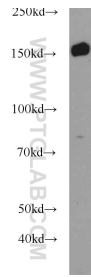
For technical support and original validation data for this product please contact:

T: 1 (888) 4PTGLAB (1-888-478-4522) (toll free in USA), or 1(312) 455-8498 (outside USA)

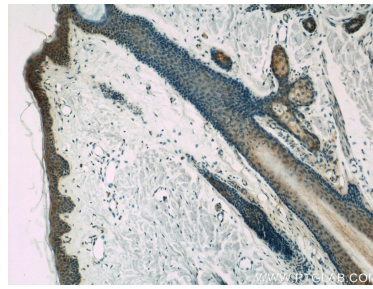
E: proteintech@ptglab.com
W: ptglab.com

This product is exclusively available under Proteintech Group brand and is not available to purchase from any other manufacturer.

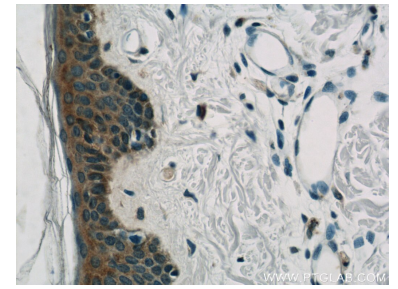
Données de validation sélectionnées



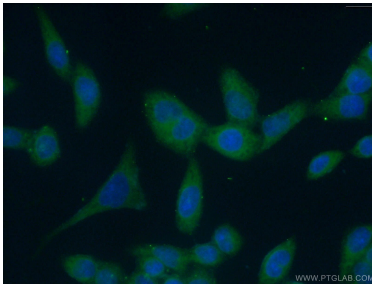
Y79 cells were subjected to SDS PAGE followed by western blot with 22585-1-AP (BCR antibody) at dilution of 1:1000 incubated at room temperature for 1.5 hours.



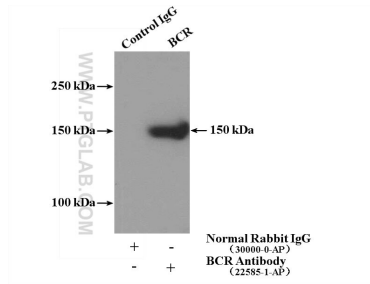
Immunohistochemical analysis of paraffin-embedded human skin slide using 22585-1-AP (BCR Antibody) at dilution of 1:50.



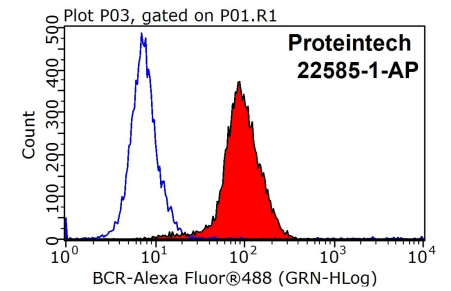
Immunohistochemical analysis of paraffin-embedded human skin slide using 22585-1-AP (BCR Antibody) at dilution of 1:50.



Immunofluorescent analysis of (-20°C Ethanol) fixed HeLa cells using 22585-1-AP (BCR antibody) at dilution of 1:50 and Alexa Fluor 488-conjugated AffiniPure Goat Anti-Rabbit IgG(H+L).



IP Result of anti-BCR (IP:22585-1-AP, 4ug; Detection:22585-1-AP 1:1000) with HEK-293 cells lysate 3000ug.



1X10⁶ HepG2 cells were stained with .2ug BCR antibody (22585-1-AP, red) and control antibody (blue). Fixed with 90% MeOH blocked with 3% BSA (30 min). Alexa Fluor 488-conjugated AffiniPure Goat Anti-Rabbit IgG(H+L) with dilution 1:1000.