

À des fins de recherche uniquement

Anticorps Polyclonal de lapin anti-TFAM



Numéro de catalogue: 22586-1-AP

Phare

94 Publications

Informations de base

Numéro de catalogue:

22586-1-AP

Taille:

150ul, Concentration: 500 µg/ml by Nanodrop;

Hôte:

Lapin

Isotype:

IgG

Immunogen Catalog Number:

AG18299

Numéro d'acquisition GenBank:

BC126366

Identification du gène (NCBI):

7019

Nom complet:

transcription factor A, mitochondrial

MW calculé

246 aa, 29 kDa

MW observés:

25 kDa

Méthode de purification:

Purification par affinité contre l'antigène

Dilutions recommandées:

WB 1:5000-1:50000

IP 0.5-4.0 ug for IP and 1:500-1:1000 for WB

IHC 1:500-1:2000

IF 1:50-1:500

Applications

Applications testées:

IF, IHC, IP, WB, ELISA

Demandes citées:

ChIP, IF, IHC, IP, WB

Spécificité de l'espèce:

Humain

Espèces citées:

Humain, poisson-zèbre, poulet

Remarque-IHC: il est suggéré de démasquer l'antigène avec un tampon de TE buffer pH 9,0; (*) À défaut, le démasquage de l'antigène peut être effectué avec un tampon citrate pH 6,0.

Contrôles positifs:

WB : cellules HEK-293, cellules HeLa, cellules HepG2, cellules Jurkat, cellules K-562, cellules MCF-7

IP : cellules HEK-293,

IHC : tissu de cancer du côlon humain,

IF : cellules HepG2,

Informations générales

TFAM, also named as TCF6L2, MtTF1, TCF6, TCF6L1, TCF6L3 and mtTFA, is a mitochondrial transcription factor that is a key activator of mitochondrial transcription as well as a participant in mitochondrial genome replication. It is involved in mitochondrial transcription regulation. TFAM is required for accurate and efficient promoter recognition by the mitochondrial RNA polymerase. It activates transcription by binding immediately upstream of transcriptional start sites. TFAM is able to unwind and bend DNA.

Publications notables

Autrice	Pubmed ID	Journal	Application
Timo Rey	32989247	Nat Cell Biol	WB
Shaofan Hu	36174386	Redox Biol	WB
Hua Zhou	36069230	Int J Oncol	WB

Stockage

Stockage:

Stocker à -20°C. Stable pendant un an après l'expédition.

Tampon de stockage:

PBS avec azoture de sodium à 0,02 % et glycérol à 50 % pH 7,3

L'aliquotage n'est pas nécessaire pour le stockage à -20C

*** Les 20ul contiennent 0,1% de BSA.

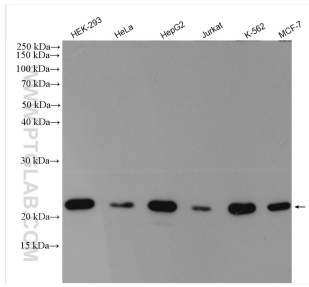
For technical support and original validation data for this product please contact:

T: 1 (888) 4PTGLAB (1-888-478-4522) (toll free in USA), or 1(312) 455-8498 (outside USA)

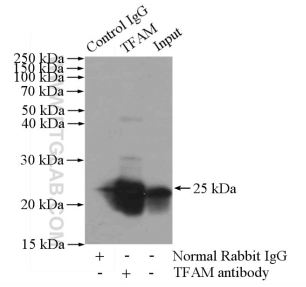
E: proteintech@ptglab.com
W: ptglab.com

This product is exclusively available under Proteintech Group brand and is not available to purchase from any other manufacturer.

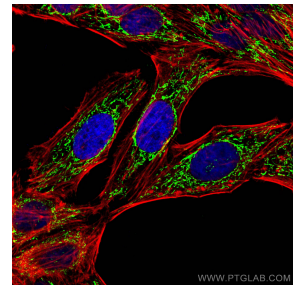
Données de validation sélectionnées



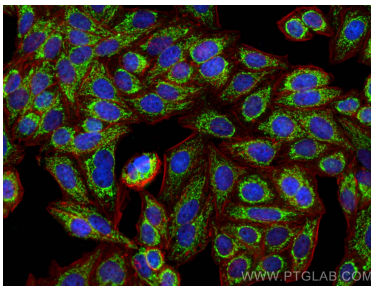
Various lysates were subjected to SDS PAGE followed by western blot with 22586-1-AP (TFAM antibody) at dilution of 1:30000 incubated at room temperature for 1.5 hours.



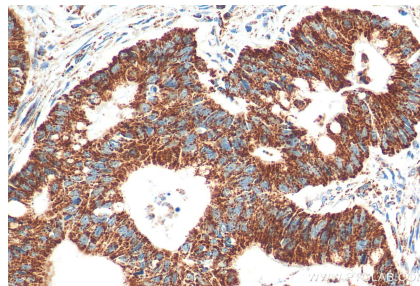
IP Result of anti-TFAM (IP:22586-1-AP, 4ug; Detection:22586-1-AP 1:800) with HEK-293 cells lysate 3200ug.



Immunofluorescent analysis of (4% PFA) fixed HepG2 cells using TFAM antibody (22586-1-AP) at dilution of 1:200 and CoraLite@488-Conjugated AffiniPure Goat Anti-Rabbit IgG(H+L), CL594-Phalloidin (red).



Immunofluorescent analysis of (4% PFA) fixed HepG2 cells using TFAM antibody (22586-1-AP) at dilution of 1:200 and CoraLite@488-Conjugated AffiniPure Goat Anti-Rabbit IgG(H+L), CL594-Phalloidin (red).



Immunohistochemical analysis of paraffin-embedded human colon cancer tissue slide using 22586-1-AP (TFAM antibody) at dilution of 1:1000 (under 40x lens). Heat mediated antigen retrieval with Tris-EDTA buffer (pH 9.0).