

À des fins de recherche uniquement

Anticorps Polyclonal de lapin anti-PRICKLE1



Numéro de catalogue: 22589-1-AP

Phare

6 Publications

Informations de base

Numéro de catalogue: 22589-1-AP	Numéro d'acquisition GenBank: BC114939	Méthode de purification: Purifié par affinité contre l'antigène
Taille: 150ul , Concentration: 1000 µg/ml by Nanodrop;	Identification du gène (NCBI): 144165	Dilutions recommandées: WB 1:500-1:2000 IP 0.5-4.0 ug for IP and 1:500-1:2000 for WB IF 1:50-1:500
Hôte: Lapin	Nom complet: prickle homolog 1 (Drosophila)	
Isotype: IgG	MW calculé: 831 aa, 94 kDa	
Immunogen Catalog Number: AG18407	MW observés: 94 kDa, 55-60 kDa	

Applications

Applications testées: IF, IP, WB, ELISA	Contrôles positifs: WB : tissu cérébral de souris, cellules Neuro-2a IP : tissu cérébral de souris, IF : tissu de cervelet de souris,
Demandes citées: IF, WB	
Spécificité de l'espèce: Humain, souris	
Espèces citées: Humain, poulet, souris	

Informations générales

PRICKLE1, also known as RILP, EPM1B, encodes a cytoplasmic protein with an N-terminal PET (Pk, Espinas, Testin) domain, three LIM domains and a C-terminal PKH (prickle homologous) domain. PRICKLE1 is expressed at the highest levels in placenta and lower levels in lung, liver, kidney and pancreas (PMID: 12525887). PRICKLE1 localizes to the nuclear membrane and has been implicated in the nuclear trafficking of the transcription repressors REST/NRSF and REST4. Mutations in PRICKLE1 have been linked to progressive myoclonus epilepsy (PMID: 18976727).

Publications notables

Autrice	Pubmed ID	Journal	Application
Yue Ban	34597683	Exp Neurol	WB
Yue Ban	34613779	Sci Adv	WB
Duanfeng Jiang	34001134	J Transl Med	WB

Stockage

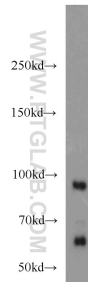
Stockage:
Stocker à -20°C. Stable pendant un an après l'expédition.
Tampon de stockage:
PBS avec azoture de sodium à 0,02 % et glycérol à 50 % pH 7,3
L'aliquotage n'est pas nécessaire pour le stockage à -20C

*** Les 20ul contiennent 0,1% de BSA.

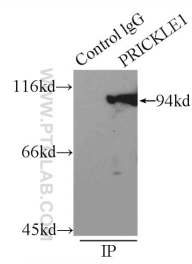
For technical support and original validation data for this product please contact:
T: 1 (888) 4PTGLAB (1-888-478-4522) (toll free in USA), or 1(312) 455-8498 (outside USA)
E: proteintech@ptglab.com
W: ptglab.com

This product is exclusively available under Proteintech Group brand and is not available to purchase from any other manufacturer.

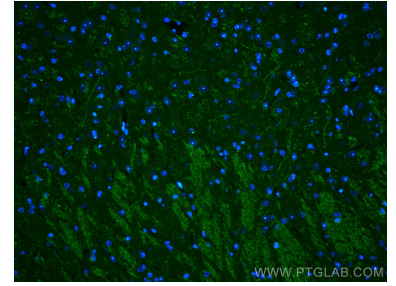
Données de validation sélectionnées



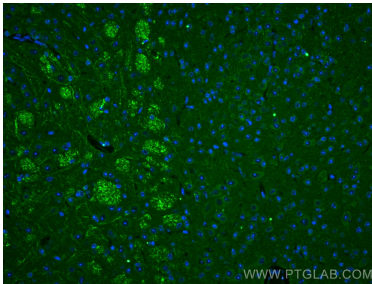
mouse brain tissue were subjected to SDS PAGE followed by western blot with 22589-1-AP (PRICKLE1 antibody) at dilution of 1:1000 incubated at room temperature for 1.5 hours.



IP Result of anti-PRICKLE1 (IP:22589-1-AP, 3ug; Detection:22589-1-AP 1:1000) with mouse brain tissue lysate 7000ug.



Immunofluorescent analysis of (4% PFA) fixed mouse cerebellum tissue using PRICKLE1 antibody (22589-1-AP) at dilution of 1:200 and CoraLite®488-Conjugated AffiniPure Goat Anti-Rabbit IgG(H+L).



Immunofluorescent analysis of (4% PFA) fixed mouse cerebellum tissue using PRICKLE1 antibody (22589-1-AP) at dilution of 1:200 and CoraLite®488-Conjugated AffiniPure Goat Anti-Rabbit IgG(H+L).