

À des fins de recherche uniquement

Anticorps Polyclonal de lapin anti-WDR33



Numéro de catalogue: 22614-1-AP

Informations de base

Numéro de catalogue: 22614-1-AP	Numéro d'acquisition GenBank: BC010283	Méthode de purification: Purifié par affinité contre l'antigène
Taille: 150ul , Concentration: 1300 µg/ml by Nanodrop and 513 µg/ml by Bradford method using BSA as the standard;	Identification du gène (NCBI): 55339	Dilutions recommandées: WB 1:500-1:2000 IP 0.5-4.0 ug for IP and 1:500-1:2000 for WB
Hôte: Lapin	Nom complet: WD repeat domain 33	
Isotype: IgG	MW calculé: 1336 aa, 146 kDa	
Immunogen Catalog Number: AG18382	MW observés: 170 kDa	

Applications

Applications testées: IP, WB, ELISA	Contrôles positifs: WB : cellules HepG2, cellules HeLa
Spécificité de l'espèce: Humain	IP : cellules HeLa,

Informations générales

WD repeat domain 33 (WDR33), also named WDC146, is a member of the WD repeat protein family. WD repeats are minimally conserved regions of approximately 40 amino acids typically bracketed by gly-his and trp-asp (GH-WD), which may facilitate formation of heterotrimeric or multiprotein complexes. Members of this family are involved in a variety of cellular processes, including cell cycle progression, signal transduction, apoptosis, and gene regulation. This gene is highly expressed in testis and the protein is localized to the nucleus. This gene may play important roles in the mechanisms of cytodifferentiation and/or DNA recombination. This gene encodes a member of the WD repeat protein family. WD repeats are minimally conserved regions of approximately 40 amino acids typically bracketed by gly-his and trp-asp (GH-WD), which may facilitate formation of heterotrimeric or multiprotein complexes. Members of this family are involved in a variety of cellular processes, including cell cycle progression, signal transduction, apoptosis, and gene regulation. This gene is highly expressed in testis and the protein is localized to the nucleus. This gene may play important roles in the mechanisms of cytodifferentiation and/or DNA recombination. Multiple alternatively spliced transcript variants encoding distinct isoforms have been found for this gene. This antibody recognizes the full length WDR33 protein.

Stockage

Stockage:
Stocker à -20°C. Stable pendant un an après l'expédition.
Tampon de stockage:
PBS avec azoture de sodium à 0,02 % et glycérol à 50 % pH 7,3
L'aliquotage n'est pas nécessaire pour le stockage à -20C

*** Les 20ul contiennent 0,1% de BSA.

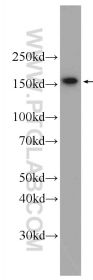
For technical support and original validation data for this product please contact:

T: 1 (888) 4PTGLAB (1-888-478-4522) (toll free in USA), or 1(312) 455-8498 (outside USA)

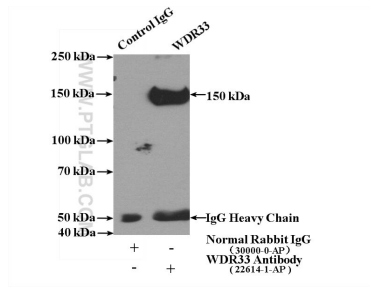
E: proteintech@ptglab.com
W: ptglab.com

This product is exclusively available under Proteintech Group brand and is not available to purchase from any other manufacturer.

Données de validation sélectionnées



HepG2 cells were subjected to SDS PAGE followed by western blot with 22614-1-AP (WDR33 Antibody) at dilution of 1:1000 incubated at room temperature for 1.5 hours.



IP Result of anti-WDR33 (IP:22614-1-AP, 4ug; Detection:22614-1-AP 1:1000) with HeLa cells lysate 3200ug.