

À des fins de recherche uniquement

# Anticorps Polyclonal de lapin anti-ATOX1



Numéro de catalogue: 22641-1-AP

1 Publications

## Informations de base

<b>Numéro de catalogue:</b> 22641-1-AP	<b>Numéro d'acquisition GenBank:</b> BC112248	<b>Méthode de purification:</b> Purification par affinité contre l'antigène
<b>Taille:</b> 150ul, Concentration: 550 µg/ml by Nanodrop and 340 µg/ml by Bradford method using BSA as the standard;	<b>Identification du gène (NCBI):</b> 475	<b>Dilutions recommandées:</b> WB 1:300-1:1500 IHC 1:50-1:500 IF 1:50-1:500
<b>Hôte:</b> Lapin	<b>Nom complet:</b> ATX1 antioxidant protein 1 homolog (yeast)	
<b>Isotype:</b> IgG	<b>MW calculé:</b> 68 aa, 8 kDa	
<b>Immunogen Catalog Number:</b> AG18460	<b>MW observés:</b> 7 kDa	

## Applications

### Applications testées:

IF, IHC, WB, ELISA

### Demandes citées:

WB

### Spécificité de l'espèce:

Humain

### Espèces citées:

souris

**Remarque-IHC: il est suggéré de démasquer l'antigène avec un tampon de TE buffer pH 9,0; (\*) A défaut, 'le démasquage de l'antigène peut être 'effectué avec un tampon citrate pH 6,0.**

### Contrôles positifs:

WB : cellules A375, cellules A549, cellules HEK-293T, cellules NCI-H1299

IHC : tissu de cancer du foie humain,

IF : cellules PC-3,

## Informations générales

Antioxidant 1 (ATOX1) is a copper chaperone to regulate copper homeostasis in cell. In the cytosol, ATOX1 always binds to copper and transfer to ATPase proteins in the trans-Golgi network, thereby promoting copper supply to various copper-dependent oxidoreductases matured within the secretory vesicles (PMID: 28294521). Also, the protein could protect cells against oxidative damage and the expression levels of ATOX1 may help to the inflammatory response and antioxidant defense, even to modulate response to the cancer (PMID: 27472369). ATOX1 plays an important role in the physiology of the human central nervous system, and it's highly expressed in the cerebral cortex and hippocampus (PMID: 30545441). Either cytosol or nucleus location of ATOX1 has been reported in different literatures, which may be associated with cell status (PMID: 24445997; 31317143).

## Publications notables

Autrice	Pubmed ID	Journal	Application
Jinsong Wei	37456842	iScience	WB

## Stockage

### Stockage:

Stocker à -20°C. Stable pendant un an après l'expédition.

### Tampon de stockage:

PBS avec azoture de sodium à 0,02 % et glycérol à 50 % pH 7,3

L'aliquotage n'est pas nécessaire pour le stockage à -20C

\*\*\* Les 20ul contiennent 0,1% de BSA.

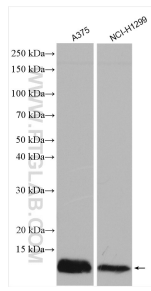
For technical support and original validation data for this product please contact:

T: 1 (888) 4PTGLAB (1-888-478-4522) (toll free in USA), or 1(312) 455-8498 (outside USA)

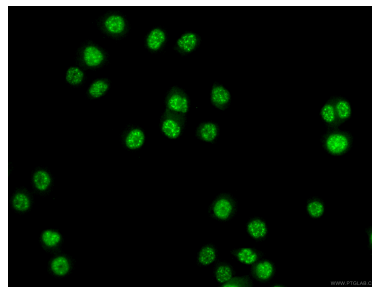
E: proteintech@ptglab.com  
W: ptglab.com

This product is exclusively available under Proteintech Group brand and is not available to purchase from any other manufacturer.

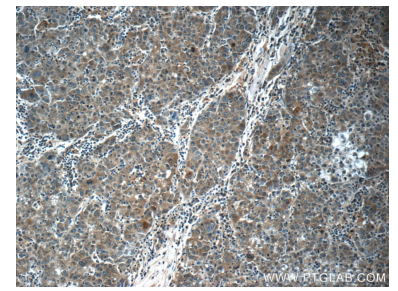
## Données de validation sélectionnées



Various lysates were subjected to SDS PAGE followed by western blot with 22641-1-AP (ATOX1 antibody) at dilution of 1:1000 incubated at room temperature for 1.5 hours.



Immunofluorescent analysis of (4% PFA) fixed PC-3 cells using 22641-1-AP (ATOX1 antibody) at dilution of 1:100 and CoraLite488-Conjugated AffiniPure Goat Anti-Rabbit IgG(H+L).



Immunohistochemical analysis of paraffin-embedded human liver cancer tissue slide using 22641-1-AP (ATOX1 Antibody) at dilution of 1:50 (under 10x lens).