

À des fins de recherche uniquement

Anticorps Polyclonal de lapin anti-ESRRB



Numéro de catalogue: 22644-1-AP

Phare

6 Publications

Informations de base

Numéro de catalogue:
22644-1-AP

Taille:
150ul, Concentration: 1000 µg/ml by Nanodrop and 500 µg/ml by Bradford method using BSA as the standard;

Hôte:
Lapin

Isotype:
IgG

Immunogen Catalog Number:
AG18523

Numéro d'acquisition GenBank:
BC131517

Identification du gène (NCBI):
2103

Nom complet:
estrogen-related receptor beta

MW calculé
508 aa, 56 kDa

MW observés:
48-56 kDa

Méthode de purification:
Purification par affinité contre l'antigène

Dilutions recommandées:
WB 1:500-1:2000
IP 0.5-4.0 ug for IP and 1:200-1:1000 for WB

Applications

Applications testées:
IP, WB, ELISA

Demandes citées:
IF, IHC, WB

Spécificité de l'espèce:
Humain, rat, souris

Espèces citées:
Humain, souris

Contrôles positifs:

WB : cellules PC-13, cellules A549

IP : cellules A549,

Informations générales

Estrogen related receptor beta (ESRRB), a NR3 Steroid Receptor, has been shown to affect early placental development. Also it can act as a repressor of transcriptional activity mediated by the glucocorticoid receptor (GR). It binds as a monomer to the extended half-site TNAAGTGCA and as a homodimer to the estrogen response element (ERE), palindromic thyroid hormone response element (TRE(pal)), and SF-1 response element, but not to the glucocorticoid response element (GRE). Estrogen related receptor beta mutations lead to abnormal development of the chorion and defective diploid trophoblast proliferation, and are lethal during midgestation. Expression has been documented in mice in the extra embryonic ectoderm that gives rise to the chorion. ESTs have been isolated from normal human eye, lung, and testis libraries. The ligand for the receptor is PPARgamma coactivator 1 (PGC-1) beta. ESRRB exists various isoforms and molecular weight of each isoform is 48 kDa, 55 kDa and 56 kDa.

Publications notables

Autrice	Pubmed ID	Journal	Application
Shuai Yu	34616727	Front Cell Dev Biol	WB,IF
Kwon Tae You	26443847	Genes Dev	WB,IF
Joshua E Burda	35614216	Nature	IHC

Stockage

Stockage:

Stocker à -20°C. Stable pendant un an après l'expédition.

Tampon de stockage:

PBS avec azoture de sodium à 0,02 % et glycérol à 50 % pH 7,3

L'aliquotage n'est pas nécessaire pour le stockage à -20C

*** Les 20ul contiennent 0,1% de BSA.

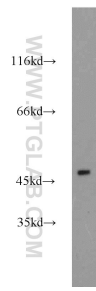
For technical support and original validation data for this product please contact:

T: 1 (888) 4PTGLAB (1-888-478-4522) (toll free in USA), or 1(312) 455-8498 (outside USA)

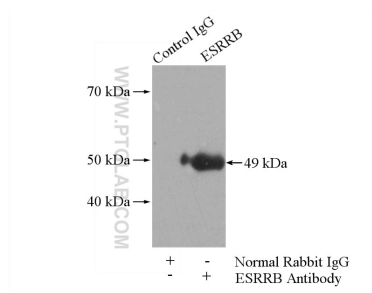
E: proteintech@ptglab.com
W: ptglab.com

This product is exclusively available under Proteintech Group brand and is not available to purchase from any other manufacturer.

Données de validation sélectionnées



PC-13 cells were subjected to SDS PAGE followed by western blot with 22644-1-AP (ESRRB antibody) at dilution of 1:1000 incubated at room temperature for 1.5 hours.



IP Result of anti-ESRRB (IP:22644-1-AP, 4ug; Detection:22644-1-AP 1:300) with A549 cells lysate 1040ug.