

À des fins de recherche uniquement

Anticorps Polyclonal de lapin anti-SLAMF6



Numéro de catalogue: 22711-1-AP

Informations de base

Numéro de catalogue: 22711-1-AP	Numéro d'acquisition GenBank: BC114495	Méthode de purification: Purification par affinité contre l'antigène
Taille: 150ul, Concentration: 1000 µg/ml by Nanodrop and 487 µg/ml by Bradford method using BSA as the standard;	Identification du gène (NCBI): 114836	Dilutions recommandées: WB 1:500-1:1000 IHC 1:50-1:500
Hôte: Lapin	Nom complet: SLAM family member 6	
Isotype: IgG	MW calculé: 332 aa, 37 kDa	
Immunogen Catalog Number: AG18517	MW observés: 60 kDa	

Applications

Applications testées: IHC, WB, ELISA	Contrôles positifs: WB : Daudi cells, IHC : tissu de cancer du côlon humain, tissu d'amygdalite humain
Spécificité de l'espèce: Humain	
Remarque-IHC: il est suggéré de démasquer l'antigène avec un tampon de TE buffer pH 9,0; (*) À défaut, le démasquage de l'antigène peut être effectué avec un tampon citrate pH 6,0.	

Informations générales

Signaling lymphocyte activation molecule 6 (SLAMF6) (Ly108 in mice, NTB-A or SF2000 in humans) is a homophilic receptor belonging to the superfamily immunoglobulin (Ig) domain-containing molecules (PMID:31199820). SLAMF6 is a type I transmembrane protein with two extracellular immunoglobulin (Ig)-like domains and three cytoplasmic tyrosine-based signaling motifs, one of which is immunoreceptor tyrosine-based switch motif (PMID:31315913). SLAMF6 is expressed on a wide variety of immune cells including T cells (also TFH), B cells, NK cells (expressed in human only), double positive thymocytes, eosinophils and neutrophils (mouse only) (PMID:11862385).

Stockage

Stockage:
Stocker à -20°C. Stable pendant un an après l'expédition.
Tampon de stockage:
PBS avec azoture de sodium à 0,02 % et glycérol à 50 % pH 7,3
L'aliquotage n'est pas nécessaire pour le stockage à -20C

*** Les 20ul contiennent 0,1% de BSA.

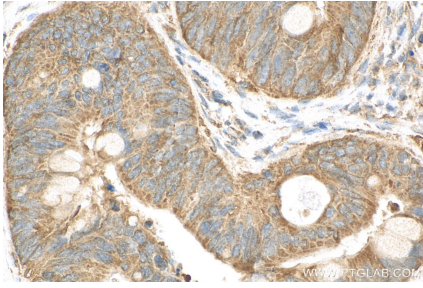
For technical support and original validation data for this product please contact:

T: 1 (888) 4PTGLAB (1-888-478-4522) (toll free in USA), or 1(312) 455-8498 (outside USA)

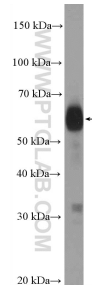
E: proteintech@ptglab.com
W: ptglab.com

This product is exclusively available under Proteintech Group brand and is not available to purchase from any other manufacturer.

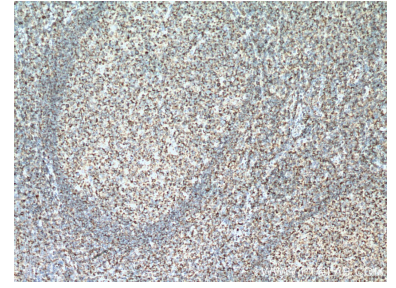
Données de validation sélectionnées



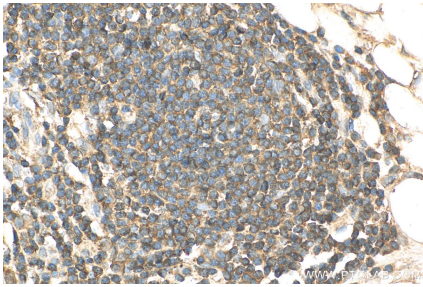
Immunohistochemical analysis of paraffin-embedded human colon cancer tissue slide using 22711-1-AP (SLAMF6 antibody) at dilution of 1:200 (under 40x lens). Heat mediated antigen retrieval with Tris-EDTA buffer (pH 9.0).



Daudi cells were subjected to SDS PAGE followed by western blot with 22711-1-AP (SLAMF6 Antibody) at dilution of 1:600 incubated at room temperature for 1.5 hours.



Immunohistochemical analysis of paraffin-embedded human tonsillitis tissue slide using 22711-1-AP (SLAMF6 Antibody) at dilution of 1:200 (under 10x lens). Heat mediated antigen retrieval with Tris-EDTA buffer (pH 9.0).



Immunohistochemical analysis of paraffin-embedded human colon cancer tissue slide using 22711-1-AP (SLAMF6 antibody) at dilution of 1:200 (under 40x lens). Heat mediated antigen retrieval with Tris-EDTA buffer (pH 9.0).