

À des fins de recherche uniquement

Anticorps Polyclonal de lapin anti-WHSC1



Numéro de catalogue: 22722-1-AP

Informations de base

Numéro de catalogue: 22722-1-AP	Numéro d'acquisition GenBank: BC152412	Méthode de purification: Purifié par affinité contre l'antigène
Taille: 150ul , Concentration: 350 µg/ml by Nanodrop;	Identification du gène (NCBI): 7468	Dilutions recommandées: WB 1:500-1:2000 IP 0.5-4.0 ug for IP and 1:200-1:1000 for WB IHC 1:50-1:500
Hôte: Lapin	Nom complet: Wolf-Hirschhorn syndrome candidate 1	
Isotype: IgG	MW calculé 162 kDa	
Immunogen Catalog Number: AG18611	MW observés: 70 kDa, 150 kDa	

Applications

Applications testées: IHC, IP, WB, ELISA	Contrôles positifs: WB : cellules HCT 116, IP : cellules HeLa, IHC : tissu de cancer du sein humain,
Spécificité de l'espèce: Humain	
Remarque-IHC: il est suggéré de démasquer l'antigène avec un tampon de TE buffer pH 9,0; (*) À défaut, 'le démasquage de l'antigène peut être effectué avec un tampon citrate pH 6,0.	

Informations générales

WHSC1 (also known as MMSET or NSD2) is a SET domain containing histone lysine methyltransferase that can di- and trimethylate histone H3 at lysine 36 (H3K36). WHSC1 mRNA is highly expressed in embryonic tissues, especially those with high degrees of proliferation, whereas in adult tissues, the mRNA is primarily expressed in thymus and testis. WHSC1 is implicated in cellular adhesion, clonogenic growth and tumorigenicity. Its overexpression has been found in various cancers. It undergoes alternative splicing resulting in different protein isoforms. Recently WHSC1 has been identified as a critical epigenetic regulator for Tfh differentiation.

Stockage

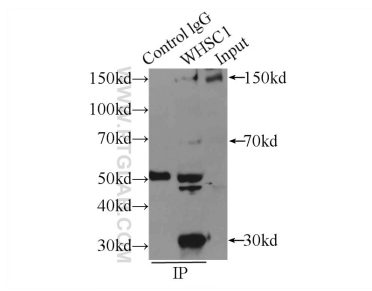
Stockage:
Stocker à -20°C. Stable pendant un an après l'expédition.
Tampon de stockage:
PBS avec azoture de sodium à 0,02 % et glycérol à 50 % pH 7,3
L'aliquotage n'est pas nécessaire pour le stockage à -20C

*** Les 20ul contiennent 0,1% de BSA.

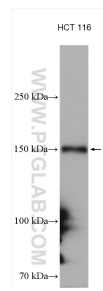
For technical support and original validation data for this product please contact:
T: 1 (888) 4PTGLAB (1-888-478-4522) (toll free in USA), or 1(312) 455-8498 (outside USA)
E: proteintech@ptglab.com
W: ptglab.com

This product is exclusively available under Proteintech Group brand and is not available to purchase from any other manufacturer.

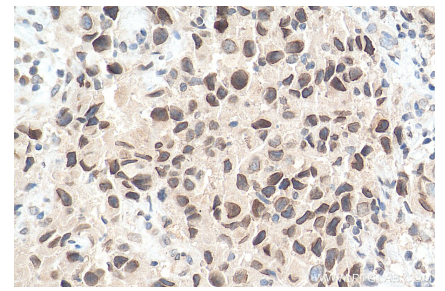
Données de validation sélectionnées



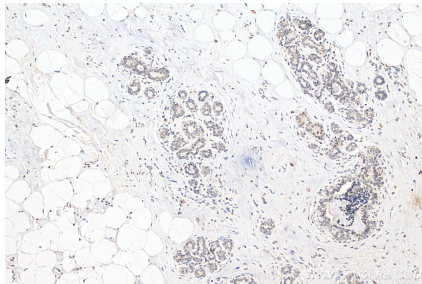
IP Result of anti-WHSC1 (IP:22722-1-AP, 3ug; Detection:22722-1-AP 1:300) with HeLa cells lysate 2000ug.



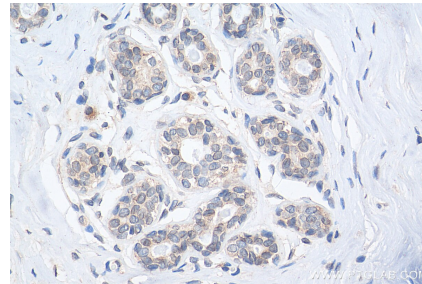
HCT 116 cells were subjected to SDS PAGE followed by western blot with 22722-1-AP (WHSC1 antibody) at dilution of 1:1000 incubated at room temperature for 1.5 hours.



Immunohistochemical analysis of paraffin-embedded human breast cancer tissue slide using 22722-1-AP (WHSC1 antibody) at dilution of 1:200 (under 40x lens). Heat mediated antigen retrieval with Tris-EDTA buffer (pH 9.0).



Immunohistochemical analysis of paraffin-embedded human breast cancer tissue slide using 22722-1-AP (WHSC1 antibody) at dilution of 1:200 (under 10x lens). Heat mediated antigen retrieval with Tris-EDTA buffer (pH 9.0).



Immunohistochemical analysis of paraffin-embedded human breast cancer tissue slide using 22722-1-AP (WHSC1 antibody) at dilution of 1:200 (under 40x lens). Heat mediated antigen retrieval with Tris-EDTA buffer (pH 9.0).