

À des fins de recherche uniquement

# Anticorps Polyclonal de lapin anti-MIXL1



Numéro de catalogue: 22772-1-AP

6 Publications

## Informations de base

Numéro de catalogue:

22772-1-AP

Taille:

150ul, Concentration: 900 µg/ml by Nanodrop and 507 µg/ml by Bradford method using BSA as the standard;

Hôte:

Lapin

Isotype:

IgG

Immunogen Catalog Number:

AG18732

Numéro d'acquisition GenBank:

BC113441

Identification du gène (NCBI):

83881

Nom complet:

Mix1 homeobox-like 1 (Xenopus laevis)

MW calculé

232 aa, 25 kDa

MW observés:

20 kDa

Méthode de purification:

Purifié par affinité contre l'antigène

Dilutions recommandées:

WB 1:500-1:2000

IF 1:50-1:500

## Applications

Applications testées:

IF, WB, ELISA

Demandes citées:

IF

Spécificité de l'espèce:

Humain, rat

Espèces citées:

Humain, porc

Contrôles positifs:

WB : cellules HEK-293, tissu pancréatique de rat

IF : cellules HEK-293,

## Informations générales

Mix1 homeobox-like 1 (MIXL1) Transcription factor that play a central role in proper axial mesendoderm morphogenesis and endoderm formation. Required for efficient differentiation of cells from the primitive streak stage to blood, by acting early in the recruitment and/or expansion of mesodermal progenitors to the hemangioblastic and hematopoietic lineages. Also involved in the morphogenesis of the heart and the gut during embryogenesis. Acts as a negative regulator of brachyury expression. This antibody is specific to MIXL1.

## Publications notables

Autrice	Pubmed ID	Journal	Application
Julie Bejoy	34746862	STAR Protoc	IF
Julie Bejoy	35883199	Stem Cell Res Ther	IF
Bingbing Ke	30038385	Cell Death Differ	

## Stockage

Stockage:

Stocker à -20°C. Stable pendant un an après l'expédition.

Tampon de stockage:

PBS avec azoture de sodium à 0,02 % et glycérol à 50 % pH 7,3

L'aliquotage n'est pas nécessaire pour le stockage à -20C

\*\*\* Les 20ul contiennent 0,1% de BSA.

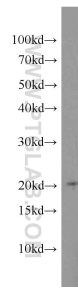
For technical support and original validation data for this product please contact:

T: 1 (888) 4PTGLAB (1-888-478-4522) (toll free in USA), or 1(312) 455-8498 (outside USA)

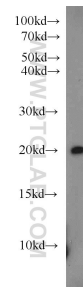
E: [proteintech@ptglab.com](mailto:proteintech@ptglab.com)  
W: [ptglab.com](http://ptglab.com)

This product is exclusively available under Proteintech Group brand and is not available to purchase from any other manufacturer.

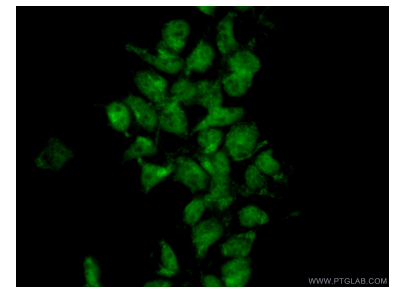
## Données de validation sélectionnées



HEK-293 cells were subjected to SDS PAGE followed by western blot with 22772-1-AP (MIXL1 antibody) at dilution of 1:1000 incubated at room temperature for 1.5 hours.



rat pancreas tissue were subjected to SDS PAGE followed by western blot with 22772-1-AP (MIXL1 antibody) at dilution of 1:500 incubated at room temperature for 1.5 hours.



Immunofluorescent analysis of (10% Formaldehyde) fixed HEK-293 cells using 22772-1-AP (MIXL1 antibody) at dilution of 1:50 and Alexa Fluor 488-conjugated AffiniPure Goat Anti-Rabbit IgG(H+L).