

À des fins de recherche uniquement

Anticorps Polyclonal de lapin anti-LIFR



Numéro de catalogue: 22779-1-AP

Phare

16 Publications

Informations de base

Numéro de catalogue: 22779-1-AP	Numéro d'acquisition GenBank: BC153096	Méthode de purification: Purifié par affinité contre l'antigène
Taille: 150ul, Concentration: 400 µg/ml by Nanodrop;	Identification du gène (NCBI): 3977	Dilutions recommandées: WB 1:500-1:1000 IP 0.5-4.0 ug for IP and 1:500-1:2000 for WB
Hôte: Lapin	Nom complet: leukemia inhibitory factor receptor alpha	IHC 1:20-1:200 IF 1:50-1:500
Isotype: IgG	MW calculé: 1097 aa, 124 kDa	
Immunogen Catalog Number: AG18742	MW observés: 190 kDa	

Applications

Applications testées:
FC, IF, IHC, IP, WB, ELISA

Demandes citées:
IF, IHC, WB

Spécificité de l'espèce:
Humain, souris

Espèces citées:
Humain, souris

Remarque-IHC: il est suggéré de démasquer l'antigène avec un tampon de TE buffer pH 9,0; (*) À défaut, le démasquage de l'antigène peut être effectué avec un tampon citrate pH 6,0.

Contrôles positifs:

WB: tissu de muscle squelettique humain, tissu de muscle squelettique de souris

IP: tissu de muscle squelettique de souris,

IHC: tissu de muscle squelettique humain, tissu de cervelet de souris, tissu placentaire humain, tissu rénal humain

IF: cellules HeLa,

Informations générales

LIFR, also known as CD118, is a subunit of a receptor for leukemia inhibitory factor (LIF). LIF is a pleiotropic cytokine of the interleukin-6 family which affects the differentiation, survival, and proliferation of a wide variety of cells in the adult and the embryo. LIFR is the low-affinity binding chain that, together with the high-affinity converter subunit gp130, forms a high-affinity receptor complex that mediates the action of LIF. The high-affinity complex also binds a related cytokine, oncostatin M (PMID: 8999038). LIFR has also been identified as a breast cancer metastasis suppressor that functions through the HIPPO-YAP pathway (PMID: 23001183).

Publications notables

Autrice	Pubmed ID	Journal	Application
Yuta Kurashina	31701022	Commun Biol	WB
Ming-Ying Ling	36326546	Arch Biochem Biophys	IHC
Chikahiro Imashiro	29993416	IEEE Trans Biomed Eng	WB

Stockage

Stockage:

Stocker à -20°C. Stable pendant un an après l'expédition.

Tampon de stockage:

PBS avec azoture de sodium à 0,02 % et glycérol à 50 % pH 7,3

L'aliquotage n'est pas nécessaire pour le stockage à -20C

***** Les 20ul contiennent 0,1% de BSA.**

For technical support and original validation data for this product please contact:

T: 1 (888) 4PTGLAB (1-888-478-4522) (toll free in USA), or 1(312) 455-8498 (outside USA)

E: proteintech@ptglab.com
W: ptglab.com

This product is exclusively available under Proteintech Group brand and is not available to purchase from any other manufacturer.

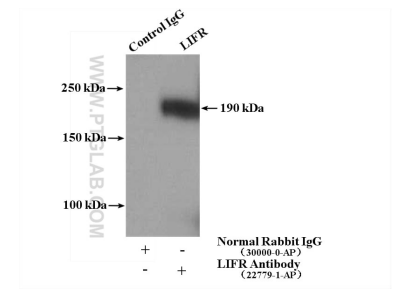
Données de validation sélectionnées



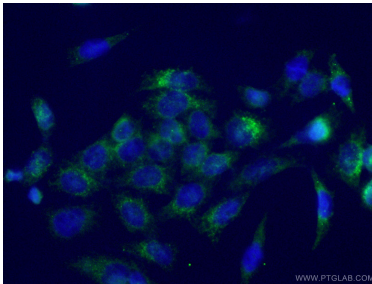
human skeletal muscle tissue were subjected to SDS PAGE followed by western blot with 22779-1-AP (LIFR antibody) at dilution of 1:800 incubated at room temperature for 1.5 hours.



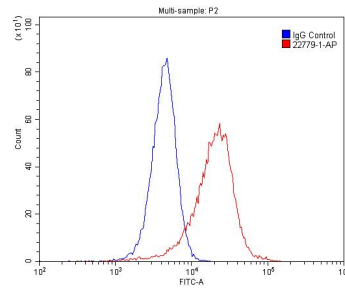
Immunohistochemical analysis of paraffin-embedded human skeletal muscle slide using 22779-1-AP (LIFR Antibody) at dilution of 1:50 (under 40x lens).



IP Result of anti-LIFR (IP:22779-1-AP, 4ug; Detection:22779-1-AP 1:1000) with mouse skeletal muscle tissue lysate 4000ug.



Immunofluorescent analysis of (-20°C Ethanol) fixed HeLa cells using 22779-1-AP (LIFR antibody) at dilution of 1:50 and Alexa Fluor 488-conjugated AffiniPure Goat Anti-Rabbit IgG(H+L).



1X10⁶ HeLa cells were stained with .2ug LIFR antibody (22779-1-AP, red) and control antibody (blue). Fixed with 4% PFA blocked with 3% BSA (30 min). Alexa Fluor 488-conjugated AffiniPure Goat Anti-Rabbit IgG(H+L) with dilution 1:1500.