

À des fins de recherche uniquement

Anticorps Polyclonal de lapin anti-MCT4



Numéro de catalogue: 22787-1-AP

Phare

55 Publications

Informations de base

Numéro de catalogue: 22787-1-AP	Numéro d'acquisition GenBank: BC112269	Méthode de purification: Purification par affinité contre l'antigène
Taille: 150ul, Concentration: 1000 µg/ml by Nanodrop;	Identification du gène (NCBI): 9123	Dilutions recommandées: WB 1:2000-1:20000 IHC 1:1000-1:4000 IF 1:200-1:800
Hôte: Lapin	Nom complet: solute carrier family 16, member 3 (monocarboxylic acid transporter 4)	
Isotype: IgG	MW calculé: 465 aa, 49 kDa	
Immunogen Catalog Number: AG18788	MW observés: 38-42 kDa	

Applications

Applications testées:
FC, IF, IHC, WB, ELISA

Demandes citées:
FC, IF, IHC, IP, WB

Spécificité de l'espèce:
Humain, rat

Espèces citées:
Chèvre, Humain, rat, souris

Remarque-IHC: il est suggéré de démasquer l'antigène avec un tampon de TE buffer pH 9,0; (*) À défaut, le démasquage de l'antigène peut être effectué avec un tampon citrate pH 6,0.

Contrôles positifs:

WB : cellules HeLa, cellules HepG2, cellules PC-3, tissu de muscle squelettique de rat

IHC : tissu de cancer du sein humain, tissu de cancer de la prostate humaine, tissu de carcinome à cellules rénales humaine, tissu de muscle squelettique de souris, tissu de muscle squelettique humaine

IF : cellules HepG2,

Informations générales

The monocarboxylate transporter 4 (MCT4, also known as SLC16A3) is involved in the transportation of metabolically important monocarboxylates such as lactate, pyruvate, acetate and ketone bodies. It is widely expressed, particularly strongly in glycolytic tissues such as white skeletal muscle fibres, astrocytes, white blood cells, chondrocytes and some mammalian cell lines. MCT4 is also linked to tumor biology because it mediates lactate transport across membranes resulting in antiapoptotic effects.

Publications notables

Autrice	Pubmed ID	Journal	Application
Xiao Liang	36212974	Evid Based Complement Alternat Med	IF
Yuto Mukai	36104287	Biopharm Drug Dispos	WB
Bo Cheng	30226548	Oncol Rep	

Stockage

Stockage:

Stocker à -20°C. Stable pendant un an après l'expédition.

Tampon de stockage:

PBS avec azoture de sodium à 0,02 % et glycérol à 50 % pH 7,3

L'aliquotage n'est pas nécessaire pour le stockage à -20C

*** Les 20ul contiennent 0,1% de BSA.

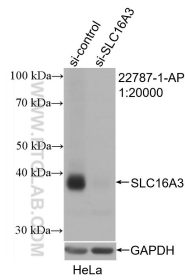
For technical support and original validation data for this product please contact:

T: 1 (888) 4PTGLAB (1-888-478-4522) (toll free in USA), or 1(312) 455-8498 (outside USA)

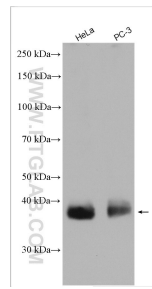
E: proteintech@ptglab.com
W: ptglab.com

This product is exclusively available under Proteintech Group brand and is not available to purchase from any other manufacturer.

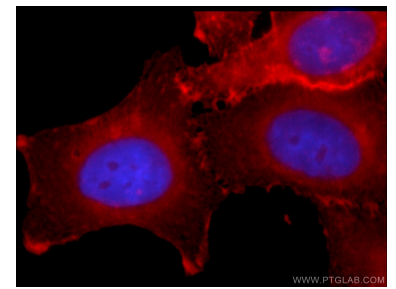
Données de validation sélectionnées



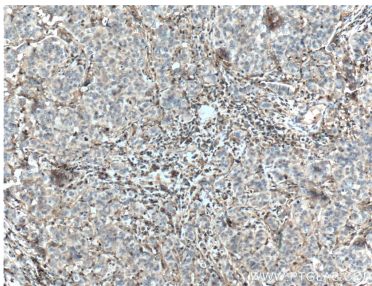
WB result of MCT4 antibody (22787-1-AP; 1:20000; incubated at room temperature for 1.5 hours) with sh-Control and sh-MCT4 transfected HeLa cells.



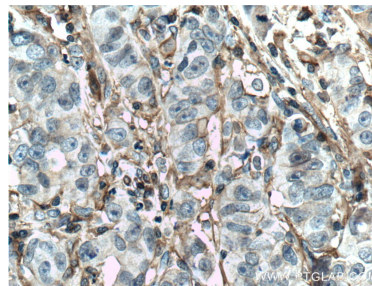
Various lysates were subjected to SDS PAGE followed by western blot with 22787-1-AP (MCT4 antibody) at dilution of 1:20000 incubated at room temperature for 1.5 hours.



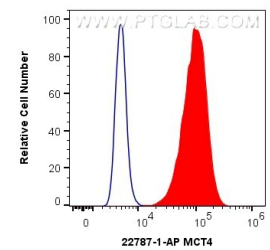
Immunofluorescent analysis of HepG2 cells using 22787-1-AP (MCT4 antibody) at dilution of 1:50 and Rhodamine-labeled goat anti-rabbit IgG (red).



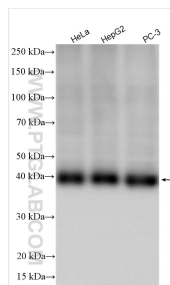
Immunohistochemical analysis of paraffin-embedded human prostate cancer tissue slide using 22787-1-AP (MCT4 antibody at dilution of 1:200 (under 10x lens). Heat mediated antigen retrieval with Tris-EDTA buffer (pH 9.0).



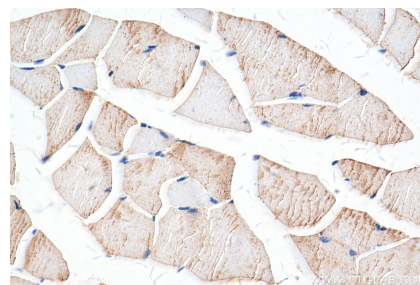
Immunohistochemical analysis of paraffin-embedded human prostate cancer tissue slide using 22787-1-AP (MCT4 antibody at dilution of 1:200 (under 40x lens). Heat mediated antigen retrieval with Tris-EDTA buffer (pH 9.0).



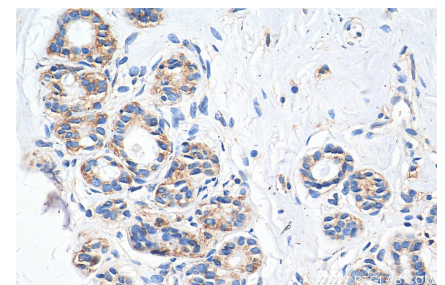
1×10^6 HepG2 cells were intracellularly stained with 0.8 μ g Anti-Human MCT4 (22787-1-AP) and CoraLite[®]488-Conjugated AffiniPure Goat Anti-Rabbit IgG(H+L) at dilution 1:1000 (red), or 0.8 μ g Rabbit IgG control Rabbit PolyAb (30000-0-AP, Clone:) (blue). Cells were fixed with 4% PFA and permeabilized with Flow Cytometry Perm Buffer (PF00011-C).



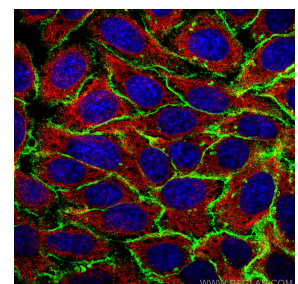
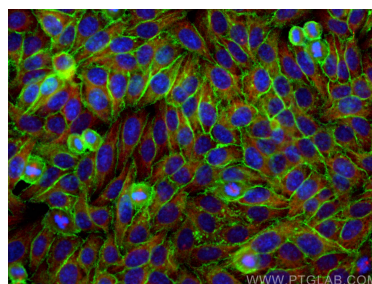
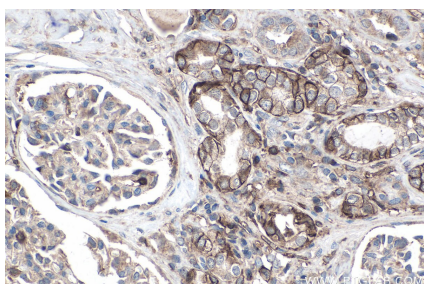
Various lysates were subjected to SDS PAGE followed by western blot with 22787-1-AP (MCT4 antibody) at dilution of 1:20000 incubated at room temperature for 1.5 hours.



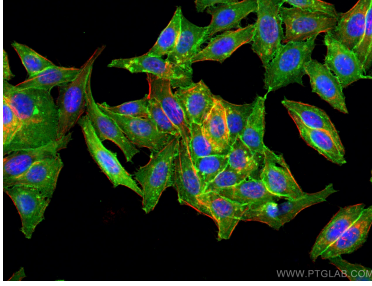
Immunohistochemical analysis of paraffin-embedded mouse skeletal muscle tissue slide using 22787-1-AP (MCT4 antibody) at dilution of 1:2000 (under 40x lens). Heat mediated antigen retrieval with Tris-EDTA buffer (pH 9.0).



Immunohistochemical analysis of paraffin-embedded human breast cancer tissue slide using 22787-1-AP (MCT4 antibody) at dilution of 1:2000 (under 40x lens). Heat mediated antigen retrieval with Tris-EDTA buffer (pH 9.0).



Immunohistochemical analysis of paraffin-embedded human renal cell carcinoma tissue slide using 22787-1-AP (MCT4 antibody) at dilution of 1:8000 (under 40x lens). Heat mediated antigen retrieval with Tris-EDTA buffer (pH 9.0).



Immunofluorescent analysis of (-20°C Ethanol) fixed HepG2 cells using MCT4 antibody (22787-1-AP) at dilution of 1:400 and CoraLite®488-Conjugated AffiniPure Goat Anti-Rabbit IgG(H+L), CL594-Phalloidin (red).

Immunofluorescent analysis of (-20°C Ethanol) fixed HepG2 cells using MCT4 antibody (22787-1-AP) at dilution of 1:200 and CoraLite®488-Conjugated AffiniPure Goat Anti-Rabbit IgG(H+L), Alpha Tubulin antibody (66031-1-Ig, Clone: 1E4C11, red).

Immunofluorescent analysis of (-20°C Ethanol) fixed HepG2 cells using MCT4 antibody (22787-1-AP) at dilution of 1:200 and CoraLite®488-Conjugated AffiniPure Goat Anti-Rabbit IgG(H+L), Alpha Tubulin antibody (66031-1-Ig, Clone: 1E4C11, red).