

À des fins de recherche uniquement

Anticorps Polyclonal de lapin anti- PHLPP



Numéro de catalogue: 22789-1-AP

Phare

28 Publications

Informations de base

Numéro de catalogue:

22789-1-AP

Numéro d'acquisition GenBank:

BC126277

Méthode de purification:

Purification par affinité contre l'antigène

Taille:

150ul, Concentration: 1200 µg/ml by Nanodrop;

Identification du gène (NCBI):

23239

Dilutions recommandées:

WB 1:2000-1:10000

Hôte:

Lapin

Nom complet: PH domain and leucine rich repeat protein phosphatase

IP 0.5-4.0 ug for IP and 1:500-1:1000 for WB

Isotype:

IgG

MW calculé

1717 aa, 184 kDa

IHC 1:50-1:500

IF 1:200-1:800

Immunogen Catalog Number:

AG18794

MW observés:

185 kDa

Applications

Applications testées:

IF, IHC, IP, WB, ELISA

Demandes citées:

IF, IHC, IP, WB

Spécificité de l'espèce:

Humain, rat, souris

Espèces citées:

Humain, porc, rat, souris

Contrôles positifs:

WB: cellules HEK-293, cellules HeLa, tissu cérébral de rat, tissu cérébral de souris

IP: tissu cérébral de souris,

IHC: tissu hépatique humain, tissu de cancer du côlon humain

IF: cellules HeLa,

Remarque-IHC: il est suggéré de démasquer l'antigène avec un tampon de TE buffer pH 9,0; (*) À défaut, le démasquage de l'antigène peut être effectué avec un tampon citrate pH 6,0.

Informations générales

PHLPP (PH domain leucine-rich-repeats protein phosphatase) belongs to a novel family of Ser/Thr protein phosphatases that consists of PHLPP1 and PHLPP2 isoforms. It has been shown that PHLPP negatively regulates multiple oncogenic pathways by directly dephosphorylating and inactivating key signaling molecules, including Akt, S6K, and RAF1. Observed MW of PHLPP is 185 kDa.

Publications notables

Autrice	Pubmed ID	Journal	Application
Viola H Lobert	35997536	Development	WB,IF
Regina B Troyanovsky	34634305	J Biol Chem	WB
Zhao Zhou	36217445	J Hepatocell Carcinoma	WB

Stockage

Stockage:

Stocker à -20°C. Stable pendant un an après l'expédition.

Tampon de stockage:

PBS avec azoture de sodium à 0,02 % et glycérol à 50 % pH 7,3

L'aliquotage n'est pas nécessaire pour le stockage à -20C

*** Les 20ul contiennent 0,1% de BSA.

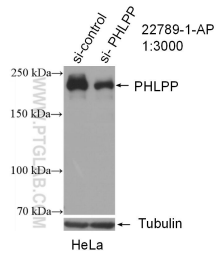
For technical support and original validation data for this product please contact:

T: 1 (888) 4PTGLAB (1-888-478-4522) (toll free in USA), or 1(312) 455-8498 (outside USA)

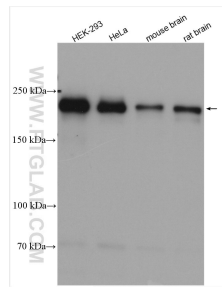
E: proteintech@ptglab.com
W: ptglab.com

This product is exclusively available under Proteintech Group brand and is not available to purchase from any other manufacturer.

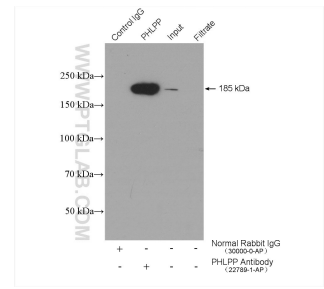
Données de validation sélectionnées



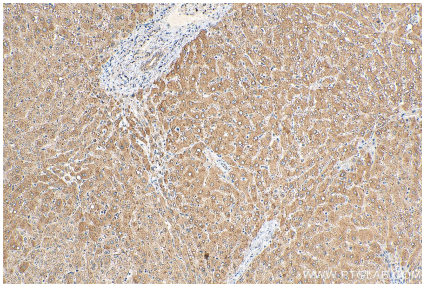
WB result of PHLPP antibody (22789-1-AP; 1:3000; incubated at room temperature for 1.5 hours) with sh-Control and sh-PHLPP transfected HeLa cells.



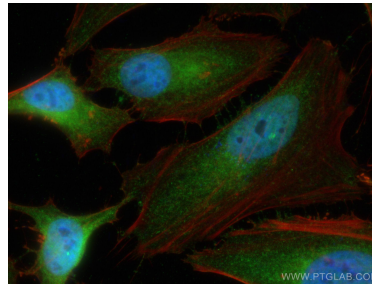
Various lysates were subjected to SDS PAGE followed by western blot with 22789-1-AP (PHLPP antibody) at dilution of 1:5000 incubated at room temperature for 1.5 hours.



IP result of anti-PHLPP (IP:22789-1-AP, 4ug; Detection:22789-1-AP 1:600) with mouse brain tissue lysate 4000 ug.



Immunohistochemical analysis of paraffin-embedded human liver tissue slide using 22789-1-AP (PHLPP antibody) at dilution of 1:200 (under 10x lens). Heat mediated antigen retrieval with Tris-EDTA buffer (pH 9.0).



Immunofluorescent analysis of (4% PFA) fixed HeLa cells using PHLPP antibody (22789-1-AP) at dilution of 1:400 and Coralite@488-Conjugated AffiniPure Goat Anti-Rabbit IgG(H+L), CL594-Phalloidin (red).