

À des fins de recherche uniquement

Anticorps Polyclonal de lapin anti-IGF2BP1



Numéro de catalogue: 22803-1-AP

Phare

53 Publications

Informations de base

Numéro de catalogue:

22803-1-AP

Taille:

150ul, Concentration: 900 µg/ml by Nanodrop;

Hôte:

Lapin

Isotype:

IgG

Immunogen Catalog Number:

AG18859

Numéro d'acquisition GenBank:

BC156957

Identification du gène (NCBI):

10642

Nom complet:

insulin-like growth factor 2 mRNA binding protein 1

MW calculé

577 aa, 63 kDa

MW observés:

65-70 kDa

Méthode de purification:

Purification par affinité contre l'antigène

Dilutions recommandées:

WB 1:5000-1:50000

IP 0.5-4.0 µg for IP and 1:500-1:2000 for WB

IHC 1:50-1:500

IF 1:20-1:200

Applications

Applications testées:

IF, IHC, IP, WB, ELISA

Demandes citées:

CoIP, IF, IHC, IP, RIP, WB

Spécificité de l'espèce:

Humain, rat, souris

Espèces citées:

Humain, porc, rat, souris

Contrôles positifs:

WB : cellules HEK-293, cellules A375, cellules HepG2, cellules Jurkat, tissu rénal de rat, tissu rénal de souris

IP : cellules HEK-293,

IHC : tissu de cancer du poumon humain, tissu de cancer du foie humain

IF : cellules A375,

Remarque-IHC: il est suggéré de démasquer l'antigène avec un tampon de TE buffer pH 9,0; (*) À défaut, 'le démasquage de l'antigène peut être effectué avec un tampon citrate pH 6,0.

Informations générales

IGF2BP1, also named as CRDBP, VICKZ1, ZBP1, is a 577 amino acid protein, which belongs to the RRM IMP/VICKZ family. IGF2BP1 can form homodimers and heterodimers with IGF2BP1 and IGF2BP3. IGF2BP1 is mainly expressed in the embryo, including in fetal liver, fetal lung, fetal kidney, fetal thymus and also expressed follicles of ovary, as well as in gonocytes of testis, spermatogonia, semen, oocytes and placenta. IGF2BP1 is Expressed in various cancers, including testis and lung cancers, as well as kidney, prostate and trachea cancers. IGF2BP1 as RNA-binding factor that recruits target transcripts to cytoplasmic protein-RNA complexes (mRNPs). It also modulates the rate and location at which target transcripts encounter the translational apparatus and shields them from endonuclease attacks or microRNA-mediated degradation. The calculated molecular weight of IGF2BP1 is 63 kDa, but modified IGF2BP1 is about 65-70 kDa.

Publications notables

| Autrice | Pubmed ID | Journal | Application |
|-------------------|-----------|----------------|-------------|
| Kusuma Suphakhong | 36183833 | J Biol Chem | WB |
| Mei-Jia Zhu | 32918374 | J Cell Mol Med | WB,IHC |
| Baochi Ou | 36302751 | Cell Death Dis | WB |

Stockage

Stockage:

Stocker à -20°C. Stable pendant un an après l'expédition.

Tampon de stockage:

PBS avec azoture de sodium à 0,02 % et glycérol à 50 % pH 7,3

L'aliquotage n'est pas nécessaire pour le stockage à -20C

*** Les 20ul contiennent 0,1% de BSA.

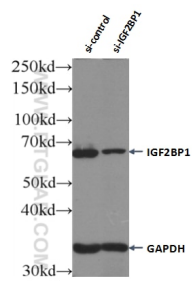
For technical support and original validation data for this product please contact:

T: 1 (888) 4PTGLAB (1-888-478-4522) (toll free in USA), or 1(312) 455-8498 (outside USA)

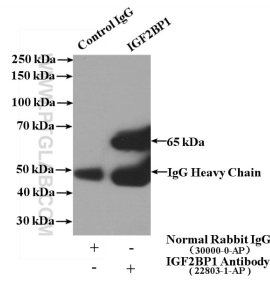
E: proteintech@ptglab.com
W: ptglab.com

This product is exclusively available under Proteintech Group brand and is not available to purchase from any other manufacturer.

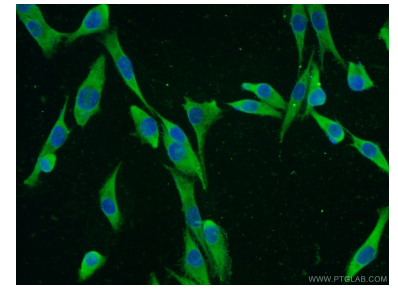
Données de validation sélectionnées



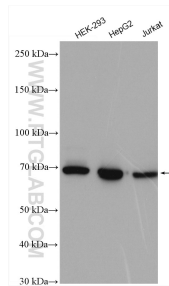
WB result of IGF2BP1 antibody (22803-1-AP; 1:6000; incubated at room temperature for 1.5 hours) with sh-Control and sh-IGF2BP1 transfected Jurkat cells.



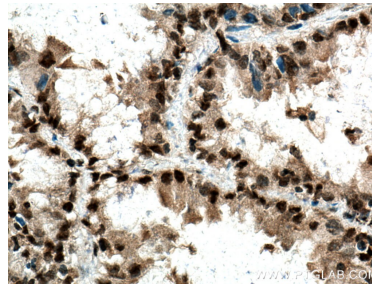
IP Result of anti-IGF2BP1 (IP:22803-1-AP, 4ug; Detection:22803-1-AP 1:1000) with HEK-293 cells lysate 1480ug.



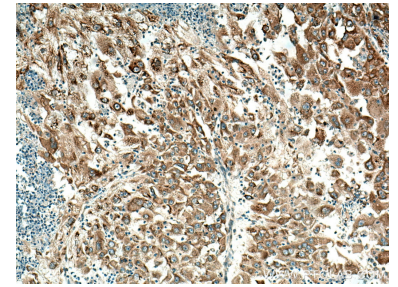
Immunofluorescent analysis of A375 cells using 22803-1-AP (IGF2BP1 antibody) at dilution of 1:50 and Alexa Fluor 488-conjugated AffiniPure Goat Anti-Rabbit IgG(H+L).



Various lysates were subjected to SDS PAGE followed by western blot with 22803-1-AP (IGF2BP1 antibody) at dilution of 1:20000 incubated at room temperature for 1.5 hours.



Immunohistochemical analysis of paraffin-embedded human lung cancer tissue slide using 22803-1-AP (IGF2BP1 antibody) at dilution of 1:200 (under 40x lens). Heat mediated antigen retrieval with Tris-EDTA buffer (pH 9.0).



Immunohistochemical analysis of paraffin-embedded human liver cancer tissue slide using 22803-1-AP (IGF2BP1 antibody) at dilution of 1:200 (under 10x lens). Heat mediated antigen retrieval with Tris-EDTA buffer (pH 9.0).