

À des fins de recherche uniquement

# Anticorps Polyclonal de lapin anti-OFD1



Numéro de catalogue: 22851-1-AP

5 Publications

## Informations de base

Numéro de catalogue: 22851-1-AP	Numéro d'acquisition GenBank: BC096344	Méthode de purification: Purification par affinité contre l'antigène
Taille: 150ul, Concentration: 450 µg/ml by Nanodrop;	Identification du gène (NCBI): 8481	Dilutions recommandées: WB 1:500-1:1000 IHC 1:20-1:200 IF 1:50-1:500
Hôte: Lapin	Nom complet: oral-facial-digital syndrome 1	
Isotype: IgG	MW calculé 1012 aa, 117 kDa	
Immunogen Catalog Number: AG18898	MW observés: 43 kDa, 120 kDa	

## Applications

Applications testées: IF, IHC, WB, ELISA	Contrôles positifs: WB : cellules HeLa, cellules SH-SY5Y IHC : tissu cérébral humain, IF : cellules HEK-293,
Demandes citées: IF, WB	
Spécificité de l'espèce: Humain	
Espèces citées: Humain, rat, souris	

**Remarque-IHC: il est suggéré de démasquer l'antigène avec un tampon de TE buffer pH 9,0; (\*) À défaut, le démasquage de l'antigène peut être effectué avec un tampon citrate pH 6,0.**

## Informations générales

OFD1, also named as CXorf5 and 71-7A, belongs to the OFD1 family. It has been implicated in several developmental syndromes, including a male-lethal X-linked dominant condition, Oral-Facial-Digital type 1 (OFD1) syndrome, X-linked recessive Simpson-Golabi-Behmel syndrome type 2 (SGBS2) and Joubert syndrome and related disorders (JSRDs). It is a component of the centrioles controlling mother and daughter centrioles length. It is recruited to the centriole IFT88 and centriole distal appendage-specific proteins including CEP164. Involved in the biogenesis of the cilium, a centriole-associated function. OFD1 plays an important role in development by regulating Wnt signaling and the specification of the left-right axis. This antibody recognize all the isoforms of OFD1. The 43 kDa is isoform 2. The ~80 kDa band is unknown.

## Publications notables

Autrice	Pubmed ID	Journal	Application
Dragomir B Krastev	29789535	Nat Commun	IF
Ryuji Kojima	35720483	Oncol Lett	WB, IF
Ji Hyun Shin	25796328	Biochem Biophys Res Commun	WB

## Stockage

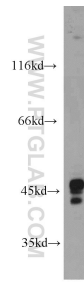
Stockage:  
Stocker à -20°C. Stable pendant un an après l'expédition.  
Tampon de stockage:  
PBS avec azoture de sodium à 0,02 % et glycérol à 50 % pH 7,3  
L'aliquotage n'est pas nécessaire pour le stockage à -20C

\*\*\* Les 20ul contiennent 0,1% de BSA.

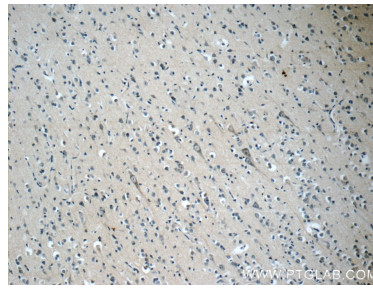
For technical support and original validation data for this product please contact:  
T: 1 (888) 4PTGLAB (1-888-478-4522) (toll free in USA), or 1(312) 455-8498 (outside USA)  
E: proteintech@ptglab.com  
W: ptglab.com

This product is exclusively available under Proteintech Group brand and is not available to purchase from any other manufacturer.

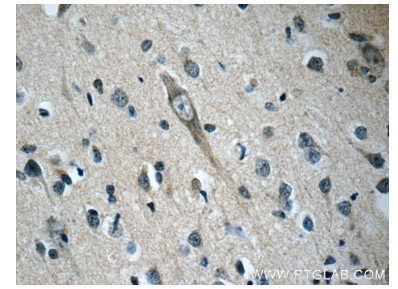
## Données de validation sélectionnées



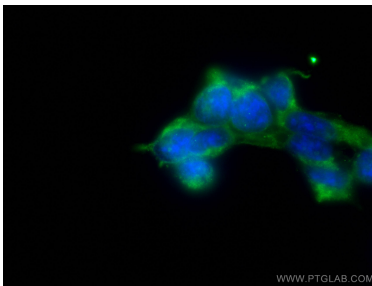
HeLa cells were subjected to SDS PAGE followed by western blot with 22851-1-AP (OFD1 antibody) at dilution of 1:500 incubated at room temperature for 1.5 hours.



Immunohistochemical analysis of paraffin-embedded human brain slide using 22851-1-AP (OFD1 Antibody) at dilution of 1:50. (under 10x lens).



Immunohistochemical analysis of paraffin-embedded human brain slide using 22851-1-AP (OFD1 Antibody) at dilution of 1:50. (under 40x lens).



Immunofluorescent analysis of (-20°C Ethanol) fixed HEK-293 cells using OFD1 antibody (22851-1-AP) at dilution of 1:200 and CoraLite®488-Conjugated AffiniPure Goat Anti-Rabbit IgG(H+L).