

À des fins de recherche uniquement

Anticorps Polyclonal de lapin anti-IL-22RA2



Numéro de catalogue: 22861-1-AP

Informations de base

Numéro de catalogue: 22861-1-AP	Numéro d'acquisition GenBank: BC125167	Méthode de purification: Purification par affinité contre l'antigène
Taille: 150ul, Concentration: 500 µg/ml by Nanodrop and 327 µg/ml by Bradford method using BSA as the standard;	Identification du gène (NCBI): 116379	Dilutions recommandées: WB 1:500-1:1000 IHC 1:50-1:500
Hôte: Lapin	Nom complet: interleukin 22 receptor, alpha 2	
Isotype: IgG	MW calculé: 263 aa, 31 kDa	
Immunogen Catalog Number: AG18854	MW observés: 27 kDa	

Applications

Applications testées: FC, IHC, WB, ELISA	Contrôles positifs: WB : cellules MDA-MB-453s, IHC : tissu de cancer du poumon humain, tissu de cancer du sein humain
Spécificité de l'espèce: Humain	
Remarque-IHC: il est suggéré de démasquer l'antigène avec un tampon de TE buffer pH 9,0; (*) À défaut, le démasquage de l'antigène peut être effectué avec un tampon citrate pH 6,0.	

Informations générales

Interleukin-22 receptor subunit alpha-2 (IL22RA2, also known as CRF2-10) is a soluble member of the type II cytokine receptor family. Through binding to IL22, IL22RA2 prevents the interaction of IL22 with the functional IL22-R complex and blocks the activity of IL22 (in vitro). IL22RA2 may play an important role as an IL22 antagonist in the regulation of inflammatory responses. It has been described that human IL22RA2 gene encodes three alternatively spliced isoforms called CRF2-10L, CRF2-10, and CRF2-10s, with molecular weights of 31 kDa, 27 kDa, and 15 kDa, respectively.

Stockage

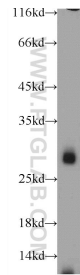
Stockage:
Stocker à -20°C. Stable pendant un an après l'expédition.
Tampon de stockage:
PBS avec azoture de sodium à 0,02 % et glycérol à 50 % pH 7,3
L'aliquotage n'est pas nécessaire pour le stockage à -20C

*** Les 20ul contiennent 0,1% de BSA.

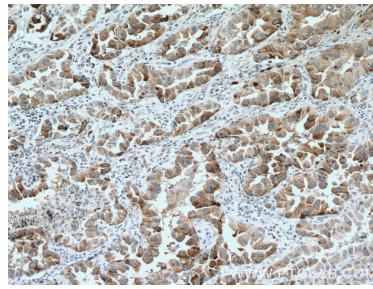
For technical support and original validation data for this product please contact:
T: 1 (888) 4PTGLAB (1-888-478-4522) (toll free in USA), or 1(312) 455-8498 (outside USA)
E: proteintech@ptglab.com
W: ptglab.com

This product is exclusively available under Proteintech Group brand and is not available to purchase from any other manufacturer.

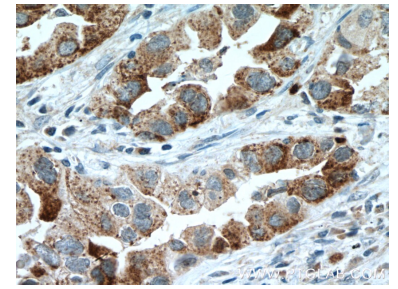
Données de validation sélectionnées



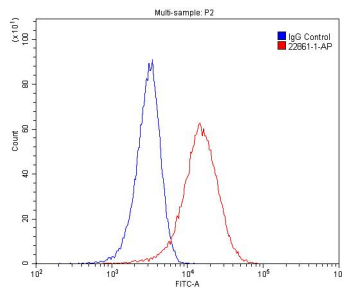
MDA-MB-453s cells were subjected to SDS PAGE followed by western blot with 22861-1-AP (IL22RA2 Antibody) at dilution of 1:600 incubated at room temperature for 1.5 hours.



Immunohistochemical analysis of paraffin-embedded human lung cancer tissue slide using 22861-1-AP (IL22RA2 antibody) at dilution of 1:200 (under 10x lens. Heat mediated antigen retrieval with Tris-EDTA buffer (pH 9.0).



Immunohistochemical analysis of paraffin-embedded human lung cancer tissue slide using 22861-1-AP (IL22RA2 antibody) at dilution of 1:200 (under 40x lens. Heat mediated antigen retrieval with Tris-EDTA buffer (pH 9.0).



1X10⁶ HeLa cells were stained with 0.2ug IL22RA2 antibody (22861-1-AP, red) and control antibody (blue). Alexa Fluor 488-conjugated AffiniPure Goat Anti-Rabbit IgG(H+L) with dilution 1:1500. Cells were fixed with 4% PFA and permeabilized with 0.1% Triton X-100.