

À des fins de recherche uniquement

Anticorps Polyclonal de lapin anti-Caspase 1/p20/p10



Numéro de catalogue: 22915-1-AP

Phare

566 Publications

Informations de base

Numéro de catalogue:

22915-1-AP

Taille:

150ul, Concentration: 650 µg/ml by Nanodrop;

Hôte:

Lapin

Isotype:

IgG

Immunogen Catalog Number:

AG11143

Numéro d'acquisition GenBank:

BC062327

Identification du gène (NCBI):

834

Nom complet:

caspase 1, apoptosis-related cysteine peptidase (interleukin 1, beta, convertase)

MW calculé

404 aa, 45 kDa

MW observés:

45-47 kDa, 30 kDa, 35 kDa

Méthode de purification:

Purification par affinité contre l'antigène

Dilutions recommandées:

WB 1:2000-1:12000

IHC 1:100-1:400

IF 1:10-1:100

Applications

Applications testées:

IF, IHC, WB, ELISA

Demandes citées:

IF, IHC, WB

Spécificité de l'espèce:

Humain, rat, souris

Espèces citées:

bovin, canin, Humain, porc, rat, singe, souris

Remarque-IHC: il est suggéré de démasquer l'antigène avec un tampon de TE buffer pH 9,0; (*) À défaut, 'le démasquage de l'antigène peut être effectué avec un tampon citrate pH 6,0.

Contrôles positifs:

WB : cellules Raji, cellules C6, cellules HeLa, cellules HepG2, cellules Jurkat, cellules MCF-7, cellules NIH/3T3, cellules THP-1, cellules U-937

IHC : tissu splénique humain,

IF : cellules C6,

Informations générales

CASP1(caspase-1) is also named as IL1BC, IL1BCE and belongs to the peptidase C14A family. It is a cysteine protease that regulates inflammatory processes through its capacity to process and activate the interleukin-1-beta (IL1B), IL18, and IL33 precursor proteins. The active caspase-1 can increase cellular membrane permeability and intracellular calcium levels, which facilitates lysosome exocytosis and release of host antimicrobial factors and microbial products (PMID:21804020). It has 5 isoforms produced by alternative splicing. 22915-1-AP can recognize all the five isoforms of caspase 1. It also can recognize p45 procaspase and the mature fragments p10 and p20.

Publications notables

Autrice	Pubmed ID	Journal	Application
Lin-Tao Xu	34601084	J Ethnopharmacol	WB
DANDAN FENG	34650637	Exp Ther Med	WB
Xin Liu	34586578	J Bioenerg Biomembr	WB

Stockage

Stockage:

Stocker à -20°C. Stable pendant un an après l'expédition.

Tampon de stockage:

PBS avec azoture de sodium à 0,02 % et glycérol à 50 % pH 7,3

L'aliquotage n'est pas nécessaire pour le stockage à -20C

*** Les 20ul contiennent 0,1% de BSA.

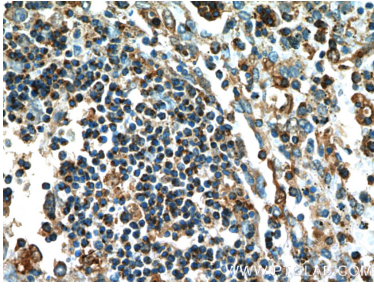
For technical support and original validation data for this product please contact:

T: 1 (888) 4PTGLAB (1-888-478-4522) (toll free in USA), or 1(312) 455-8498 (outside USA)

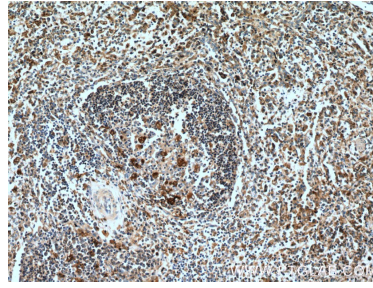
E: proteintech@ptglab.com
W: ptglab.com

This product is exclusively available under Proteintech Group brand and is not available to purchase from any other manufacturer.

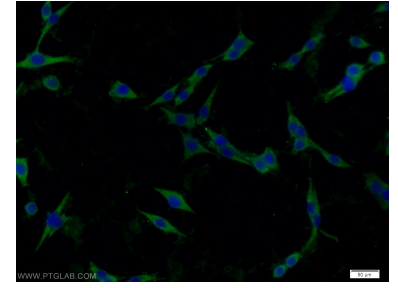
Données de validation sélectionnées



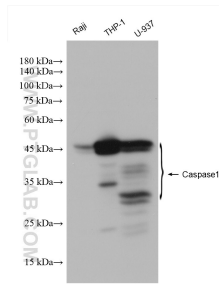
Immunohistochemical analysis of paraffin-embedded human spleen tissue slide using 22915-1-AP (Caspase 1 Antibody) at dilution of 1:200 (under 10x lens).



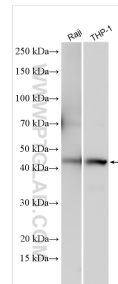
Immunohistochemical analysis of paraffin-embedded human spleen tissue slide using 22915-1-AP (Caspase 1 Antibody) at dilution of 1:200 (under 40x lens).



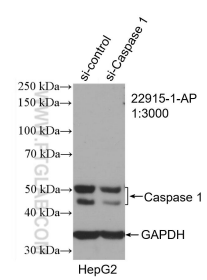
Immunofluorescent analysis of C6 cells using 22915-1-AP (Caspase 1 antibody) at dilution of 1:25 and Alexa Fluor 488-conjugated AffiniPure Goat Anti-Rabbit IgG(H+L).



Various lysates were subjected to SDS PAGE followed by western blot with 22915-1-AP (Caspase 1/p20/p10 antibody) at dilution of 1:6000 incubated at room temperature for 1.5 hours.



Various lysates were subjected to SDS PAGE followed by western blot with 22915-1-AP (Caspase 1/p20/p10 antibody) at dilution of 1:8000 incubated at room temperature for 1.5 hours.



WB result of Caspase 1/p20/p10 antibody (22915-1-AP; 1:3000; incubated at room temperature for 1.5 hours) with sh-Control and sh-Caspase 1/p20/p10 transfected HepG2 cells.