

À des fins de recherche uniquement

Anticorps Polyclonal de lapin anti- PRODH



Numéro de catalogue: 22980-1-AP

Phare

10 Publications

Informations de base

Numéro de catalogue:
22980-1-AP

Taille:
150ul, Concentration: 600 µg/ml by
Nanodrop and 347 µg/ml by Bradford
method using BSA as the standard;

Hôte:
Lapin

Isotype:
IgG

Immunogen Catalog Number:
AG18429

Numéro d'acquisition GenBank:
BC118597

Identification du gène (NCBI):
5625

Nom complet:
proline dehydrogenase (oxidase) 1

MW calculé
600 aa, 68 kDa

MW observés:
56 kDa, 66 kDa

Méthode de purification:
Purification par affinité contre
l'antigène

Dilutions recommandées:
WB 1:2000-1:10000
IHC 1:20-1:200

Applications

Applications testées:
IHC, WB, ELISA

Demandes citées:
IF, IHC, WB

Spécificité de l'espèce:
Humain, rat, souris

Espèces citées:
Humain, rat, souris

**Remarque-IHC: il est suggéré de démasquer
l'antigène avec un tampon de TE buffer pH
9,0; (*) A défaut, 'le démasquage de
l'antigène peut être 'effectué avec un
tampon citrate pH 6,0.**

Contrôles positifs:

WB : tissu hépatique de souris, cellules A549, tissu
hépatique de rat

IHC : tissu de cervelet humain, tissu de cancer du foie
humain, tissu de cancer du sein humain, tissu de
muscle squelettique humain

Informations générales

PRODH(Proline dehydrogenase 1, mitochondrial) is also named as PIG6, HSPOX2, PRODH1, PRODH2, POX, SCZD4, TP53I6 and belongs to the proline oxidase family. It is an oxidoreductase involved in the transfer of redox potential across the mitochondrial membrane and catalyzes the rate-limiting oxidation of proline to pyrroline- 5-carboxylate (P5C). High PRODH activity is sufficient to induce mitochondria-mediated apoptosis in the presence of proline. Defects in PRODH are the cause of hyperprolinemia type 1 (HP-1) and defects in PRODH are associated with susceptibility to schizophrenia type 4 (SCZD4). This protein has 3 isoforms produced by alternative splicing with the molecular mass of 68 kDa, 59 kDa and 56 kDa.

Publications notables

Autrice	Pubmed ID	Journal	Application
Weijing Zhang	36230367	Animals (Basel)	WB,IF
Chengwen Feng	32883027	Animals (Basel)	WB,IF
Jiacheng Wang	33294127	Oxid Med Cell Longev	WB

Stockage

Stockage:

Stocker à -20°C. Stable pendant un an après l'expédition.

Tampon de stockage:

PBS avec azoture de sodium à 0,02 % et glycérol à 50 % pH 7,3

L'aliquotage n'est pas nécessaire pour le stockage à -20C

*** Les 20ul contiennent 0,1% de BSA.

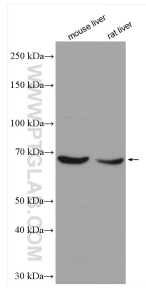
For technical support and original validation data for this product please contact:

T: 1 (888) 4PTGLAB (1-888-478-4522) (toll free
in USA), or 1(312) 455-8498 (outside USA)

E: proteintech@ptglab.com
W: ptglab.com

This product is exclusively available under Proteintech
Group brand and is not available to purchase from any
other manufacturer.

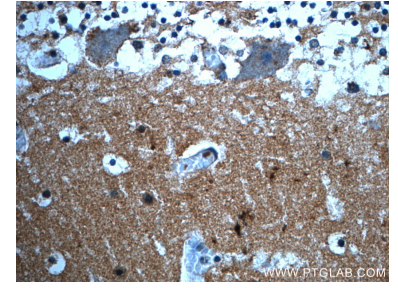
Données de validation sélectionnées



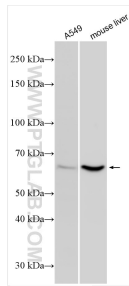
Various lysates were subjected to SDS PAGE followed by western blot with 22980-1-AP (PRODH antibody) at dilution of 1:5000 incubated at room temperature for 1.5 hours.



Immunohistochemical analysis of paraffin-embedded human cerebellum slide using 22980-1-AP (PRODH Antibody) at dilution of 1:50 (under 10x lens).



Immunohistochemical analysis of paraffin-embedded human cerebellum slide using 22980-1-AP (PRODH Antibody) at dilution of 1:50 (under 40x lens).



Various lysates were subjected to SDS PAGE followed by western blot with 22980-1-AP (PRODH antibody) at dilution of 1:5000 incubated at room temperature for 1.5 hours.