

À des fins de recherche uniquement

# Anticorps Polyclonal de lapin anti-CDKAL1



Numéro de catalogue: 22988-1-AP

1 Publications

## Informations de base

Numéro de catalogue: 22988-1-AP	Numéro d'acquisition GenBank: BC121020	Méthode de purification: Purifié par affinité contre l'antigène
Taille: 150ul, Concentration: 700 µg/ml by Nanodrop and 367 µg/ml by Bradford method using BSA as the standard;	Identification du gène (NCBI): 54901	Dilutions recommandées: WB 1:1000-1:4000 IHC 1:50-1:500 IF 1:20-1:200
Hôte: Lapin	Nom complet: CDK5 regulatory subunit associated protein 1-like 1	
Isotype: IgG	MW calculé: 579 aa, 65 kDa	
Immunogen Catalog Number: AG19060	MW observés: 60-65 kDa	

## Applications

### Applications testées:

IF, IHC, WB, ELISA

### Demandes citées:

WB

### Spécificité de l'espèce:

Humain, souris

### Espèces citées:

Humain

**Remarque-IHC: il est suggéré de démasquer l'antigène avec un tampon de TE buffer pH 9,0; (\*) À défaut, 'le démasquage de l'antigène peut être effectué avec un tampon citrate pH 6,0.**

### Contrôles positifs:

WB : tissu pulmonaire de souris, cellules HepG2, cellules HT-1080, cellules Jurkat

IHC : tissu œsophagien humain,

IF : cellules HepG2,

## Informations générales

Cell cycle progression is controlled, in part, by a family of cyclin dependent kinases (Cdks) that work to phosphorylate key substrates involved in each phase of cell cycle progression. Cdks are the catalytic subunits of serine/threonine protein kinases, a large family of proteins that act as regulators of the eukaryotic cell cycle. CDKAL1 (Cdk5 regulatory subunit associated protein 1-like 1) is a 579 amino acid single-pass membrane protein that contains one TRAM domain and is similar to Cdk5 regulatory subunit associated proteins (CDK5RAPs). Expressed in pancreas, brain and skeletal muscle, CDKAL1 uses iron as a cofactor and is involved in glucose-stimulated INS secretion. Defects in the gene encoding CDKAL1 impair INS secretion and are associated with the development of type 2 diabetes. Multiple isoforms of CDKAL1 exist due to alternative splicing events. This antibody recognizes the 65kd isoform of CDKAL1.

## Publications notables

Autrice	Pubmed ID	Journal	Application
Rongsheng Huang	36786012	Adv Sci (Weinh)	WB

## Stockage

### Stockage:

Stocker à -20°C. Stable pendant un an après l'expédition.

### Tampon de stockage:

PBS avec azoture de sodium à 0,02 % et glycérol à 50 % pH 7,3

L'aliquotage n'est pas nécessaire pour le stockage à -20C

\*\*\* Les 20ul contiennent 0,1% de BSA.

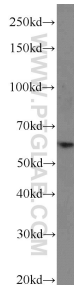
For technical support and original validation data for this product please contact:

T: 1 (888) 4PTGLAB (1-888-478-4522) (toll free in USA), or 1(312) 455-8498 (outside USA)

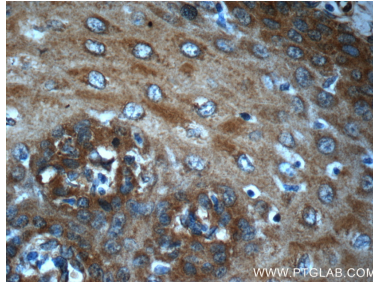
E: proteintech@ptglab.com  
W: ptglab.com

This product is exclusively available under Proteintech Group brand and is not available to purchase from any other manufacturer.

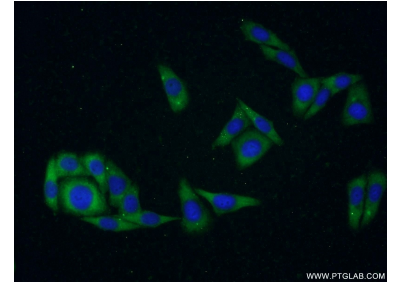
## Données de validation sélectionnées



mouse lung tissue were subjected to SDS PAGE followed by western blot with 22988-1-AP (CDKAL1 antibody) at dilution of 1:2000 incubated at room temperature for 1.5 hours.



Immunohistochemical analysis of paraffin-embedded human oesophagus slide using 22988-1-AP (CDKAL1 Antibody) at dilution of 1:50.



Immunofluorescent analysis of HepG2 cells using 22988-1-AP (CDKAL1 antibody) at dilution of 1:50 and Alexa Fluor 488-conjugated AffiniPure Goat Anti-Rabbit IgG(H+L).