

À des fins de recherche uniquement

Anticorps Polyclonal de lapin anti-PARP1



Numéro de catalogue: 22999-1-AP

Phare

5 Publications

Informations de base

Numéro de catalogue:
22999-1-AP

Taille:
150ul, Concentration: 600 µg/ml by
Nanodrop;

Hôte:
Lapin

Isotype:
IgG

Immunogen Catalog Number:
AG19173

Numéro d'acquisition GenBank:
BC037545

Identification du gène (NCBI):
142

Nom complet:
poly (ADP-ribose) polymerase 1

MW calculé
1014 aa, 113 kDa

MW observés:
113-116 kDa

Méthode de purification:
Purification par affinité contre
l'antigène

Dilutions recommandées:
WB 1:2000-1:16000
IP 0.5-4.0 ug for IP and 1:500-1:2000
for WB
IHC 1:50-1:500
IF 1:50-1:500

Applications

Applications testées:
FC (Intra), IF, IHC, IP, WB, ELISA

Demandes citées:
WB

Spécificité de l'espèce:
Humain, souris

Espèces citées:
Humain

Contrôles positifs:

WB : cellules HEK-293, cellules Jurkat, cellules K-562

IP : cellules K-562,

IHC : tissu de cancer du poumon humain, tissu de
cancer du sein humain

IF : cellules Neuro-2a,

**Remarque-IHC: il est suggéré de démasquer
l'antigène avec un tampon de TE buffer pH
9,0; (*) À défaut, le démasquage de
l'antigène peut être effectué avec un
tampon citrate pH 6,0.**

Informations générales

PARP1 (poly(ADP-ribose) polymerase 1) is a nuclear enzyme catalyzing the poly(ADP-ribosyl)ation of many key proteins in vivo. The normal function of PARP1 is the routine repair of DNA damage. Activated by DNA strand breaks, the PARP1 is cleaved into an 85 to 89-kDa COOH-terminal fragment and a 24-kDa NH2-terminal peptide by caspases during the apoptotic process. The appearance of PARP fragments is commonly considered as an important biomarker of apoptosis. In addition to caspases, other proteases like calpains, cathepsins, granzymes and matrix metalloproteinases (MMPs) have also been reported to cleave PARP1 and gave rise to fragments ranging from 42-89-kD. This antibody was generated against the N-terminal region of human PARP1 and it recognizes the full-length as well as the cleavage of the PARP1.

Publications notables

Autrice	Pubmed ID	Journal	Application
Mingming Yang	35648484	Nucleic Acids Res	WB
Yongxiang Zou	28938551	Oncotarget	WB
Xiaosong Wei	32194406	Front Pharmacol	WB

Stockage

Stockage:
Stocker à -20°C. Stable pendant un an après l'expédition.

Tampon de stockage:
PBS avec azoture de sodium à 0,02 % et glycérol à 50 % pH 7,3
L'aliquoteage n'est pas nécessaire pour le stockage à -20C

*** Les 20ul contiennent 0,1% de BSA.

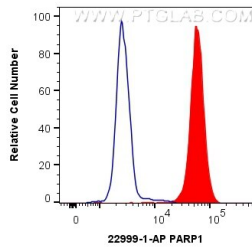
For technical support and original validation data for this product please contact:

T: 1 (888) 4PTGLAB (1-888-478-4522) (toll free
in USA), or 1(312) 455-8498 (outside USA)

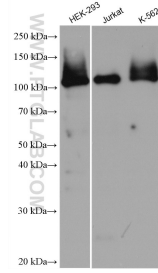
E: proteintech@ptglab.com
W: ptglab.com

This product is exclusively available under Proteintech Group brand and is not available to purchase from any other manufacturer.

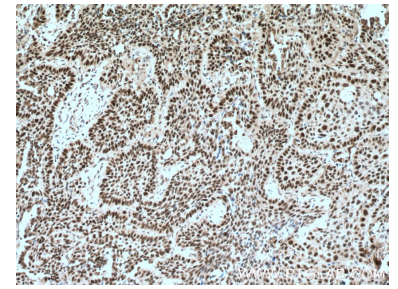
Données de validation sélectionnées



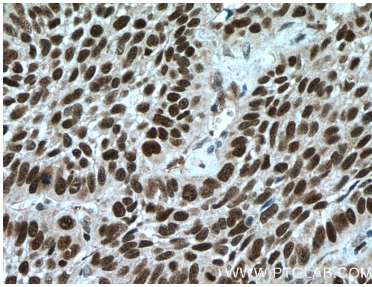
1X10⁶ K-562 cells were intracellularly stained with 0.4 ug Anti-Human PARP1 (22999-1-AP) and CoraLite®488-Conjugated AffiniPure Goat Anti-Rabbit IgG(H+L) at dilution 1:1000 (red), or 0.4 ug Control Antibody. Cells were fixed and permeabilized with Transcription Factor Staining Buffer Kit (PF00011).



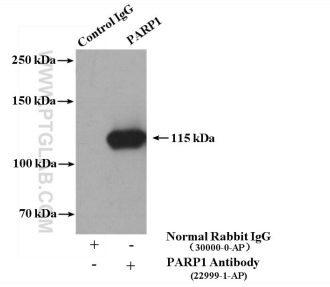
Various lysates were subjected to SDS PAGE followed by western blot with 22999-1-AP (PARP1 antibody) at dilution of 1:8000 incubated at room temperature for 1.5 hours.



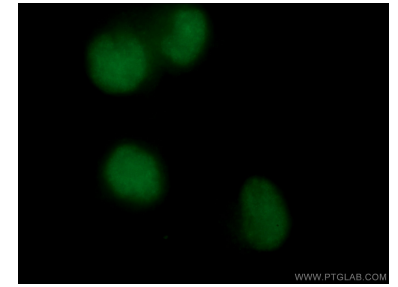
Immunohistochemical analysis of paraffin-embedded human lung cancer tissue slide using 22999-1-AP (PARP1 antibody) at dilution of 1:200 (under 10x lens. Heat mediated antigen retrieval with Tris-EDTA buffer (pH 9.0).



Immunohistochemical analysis of paraffin-embedded human lung cancer tissue slide using 22999-1-AP (PARP1 antibody) at dilution of 1:200 (under 40x lens. Heat mediated antigen retrieval with Tris-EDTA buffer (pH 9.0).



IP Result of anti-PARP1 (IP:22999-1-AP, 4ug; Detection:22999-1-AP 1:1000) with K-562 cells lysate 3200ug.



Immunofluorescent analysis of (4% PFA) fixed Neuro-2a cells using 22999-1-AP (PARP1 antibody) at dilution of 1:50 and CoraLite488-Conjugated AffiniPure Goat Anti-Rabbit IgG(H+L).