

À des fins de recherche uniquement

# Anticorps Polyclonal de lapin anti-SORCS1



Numéro de catalogue: 23002-1-AP

1 Publications

## Informations de base

<b>Numéro de catalogue:</b> 23002-1-AP	<b>Numéro d'acquisition GenBank:</b> BC131597	<b>Méthode de purification:</b> Purifié par affinité contre l'antigène
<b>Taille:</b> 150ul, Concentration: 600 µg/ml by Nanodrop and 300 µg/ml by Bradford method using BSA as the standard;	<b>Identification du gène (NCBI):</b> 114815	<b>Dilutions recommandées:</b> WB 1:1000-1:6000 IHC 1:20-1:200
<b>Hôte:</b> Lapin	<b>Nom complet:</b> sortilin-related VPS10 domain containing receptor 1	
<b>Isotype:</b> IgG	<b>MW calculé:</b> 1168 aa, 130 kDa	
<b>Immunogen Catalog Number:</b> AG19199	<b>MW observés:</b> 60-80 kDa	

## Applications

### Applications testées:

FC, IHC, WB, ELISA

### Demandes citées:

WB

### Spécificité de l'espèce:

Humain, souris

### Espèces citées:

Humain

**Remarque-IHC: il est suggéré de démasquer l'antigène avec un tampon de TE buffer pH 9,0; (\*) A défaut, le démasquage de l'antigène peut être effectué avec un tampon citrate pH 6,0.**

### Contrôles positifs:

WB : cellules HEK-293, cellules Y79, tissu cérébral humain, tissu rénal de souris

IHC : tissu cérébral humain,

## Informations générales

SORCS1, also named as SorCS, belongs to the family of VPS10 domain-containing receptors. SorCS1 immunoreactivity is widespread in a population of neurons throughout the brain. Two different types of cellular localization were observed. Most SorCS1 immunoreactive neurons exhibit a punctate cytoplasmic staining which extends into the dendrites, whilst occasionally SorCS1 neuronal immunoreactivity is associated with the plasma membrane.

## Publications notables

Autrice	Pubmed ID	Journal	Application
Junfen Xu	34326275	Aging (Albany NY)	WB

## Stockage

### Stockage:

Stocker à -20°C. Stable pendant un an après l'expédition.

### Tampon de stockage:

PBS avec azoture de sodium à 0,02 % et glycérol à 50 % pH 7,3

L'aliquotage n'est pas nécessaire pour le stockage à -20C

\*\*\* Les 20ul contiennent 0,1% de BSA.

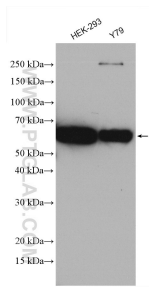
For technical support and original validation data for this product please contact:

T: 1 (888) 4PTGLAB (1-888-478-4522) (toll free in USA), or 1(312) 455-8498 (outside USA)

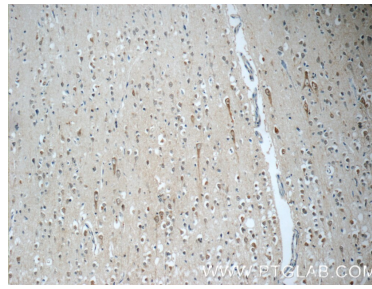
E: [proteintech@ptglab.com](mailto:proteintech@ptglab.com)  
W: [ptglab.com](http://ptglab.com)

This product is exclusively available under Proteintech Group brand and is not available to purchase from any other manufacturer.

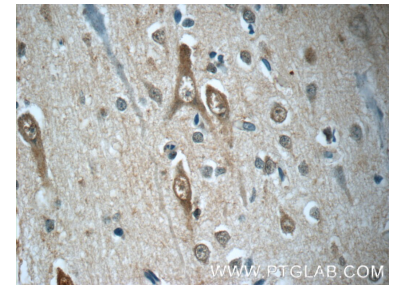
## Données de validation sélectionnées



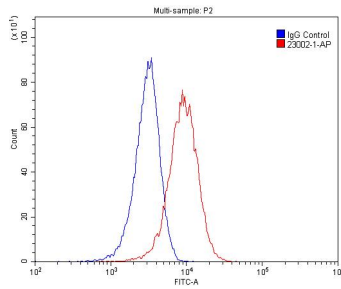
Various lysates were subjected to SDS PAGE followed by western blot with 23002-1-AP (SORCS1 antibody) at dilution of 1:3000 incubated at room temperature for 1.5 hours.



Immunohistochemical analysis of paraffin-embedded human brain tissue slide using 23002-1-AP (SORCS1 Antibody) at dilution of 1:50 (under 10x lens).



Immunohistochemical analysis of paraffin-embedded human brain tissue slide using 23002-1-AP (SORCS1 Antibody) at dilution of 1:50 (under 40x lens).



1X10<sup>6</sup> HeLa cells were stained with 0.2ug SORCS1 antibody (23002-1-AP, red) and control antibody (blue). Alexa Fluor 488-conjugated AffiniPure Goat Anti-Rabbit IgG(H+L) with dilution 1:1500. Cells were fixed with 4% PFA and permeabilized with 0.1% Triton X-100.