

À des fins de recherche uniquement

# Anticorps Polyclonal de lapin anti-SCP2



Numéro de catalogue: 23006-1-AP

Phare

6 Publications

## Informations de base

Numéro de catalogue:

23006-1-AP

Taille:

150ul, Concentration: 650 µg/ml by Nanodrop;

Hôte:

Lapin

Isotype:

IgG

Immunogen Catalog Number:

AG19215

Numéro d'acquisition GenBank:

BC005911

Identification du gène (NCBI):

6342

Nom complet:

sterol carrier protein 2

MW calculé

547 aa, 59 kDa

MW observés:

13-15 kDa

Méthode de purification:

Purification par affinité contre l'antigène

Dilutions recommandées:

WB 1:1000-1:4000

IP 0.5-4.0 ug for IP and 1:500-1:1000 for WB

IF 1:20-1:200

## Applications

Applications testées:

FC, IF, IP, WB, ELISA

Demandes citées:

IF, IHC, WB

Spécificité de l'espèce:

Humain, souris

Espèces citées:

Humain, Lapin, rat, souris

Contrôles positifs:

WB : cellules HEK-293T, cellules HEK-293, cellules HepG2, cellules K-562, cellules NIH/3T3

IP : cellules HepG2,

IF : cellules HepG2,

## Informations générales

SCP2 (Sterol carrier protein-2), also called nonspecific lipid-transfer protein, is thought to play a major role in intracellular lipid transport and metabolism. Mutations of SCP2 have been associated with diseases involving abnormalities in lipid trafficking, such as Zellweger syndrome. The alternative splicing generates 58 kDa SCPx and 13-15 kDa SCP2 proteins, both of which contain a C-terminal SCP2 domain. In addition to the SCP2 domain, SCPx also contains an amino-terminal thiolase domain. The proteolytic cleavage of SCPx occurred when it was imported into peroxisomes, giving rise to a 44-46 kDa thiolase and a 13-15 kDa SCP2. 23006-1-AP antibody recognizes the 13-15 kDa SCP2 protein.

## Publications notables

Autrice	Pubmed ID	Journal	Application
Michael Landowski	36599953	Commun Biol	WB
Shotaro Wani	26920047	J Biochem	WB
Nancy C Li	26901662	PLoS One	IF

## Stockage

Stockage:

Stocker à -20°C. Stable pendant un an après l'expédition.

Tampon de stockage:

PBS avec azoture de sodium à 0,02 % et glycérol à 50 % pH 7,3

L'aliquotage n'est pas nécessaire pour le stockage à -20C

\*\*\* Les 20ul contiennent 0,1% de BSA.

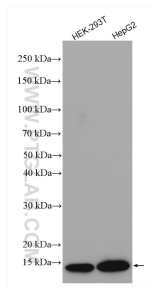
For technical support and original validation data for this product please contact:

T: 1 (888) 4PTGLAB (1-888-478-4522) (toll free in USA), or 1(312) 455-8498 (outside USA)

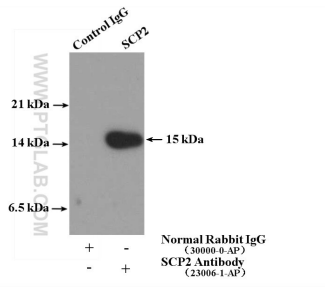
E: proteintech@ptglab.com  
W: ptglab.com

This product is exclusively available under Proteintech Group brand and is not available to purchase from any other manufacturer.

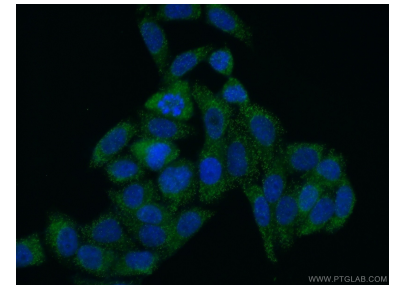
## Données de validation sélectionnées



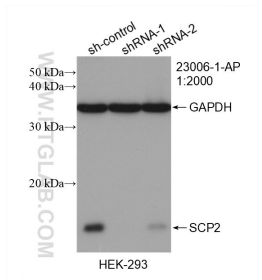
Various lysates were subjected to SDS PAGE followed by western blot with 23006-1-AP (SCP2 antibody) at dilution of 1:2000 incubated at room temperature for 1.5 hours.



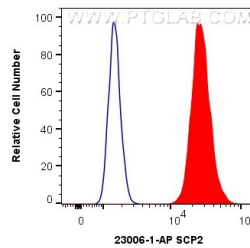
IP Result of anti-SCP2 (IP:23006-1-AP, 4ug; Detection:23006-1-AP 1:500) with HepG2 cells lysate 3600ug.



Immunofluorescent analysis of (10% Formaldehyde) fixed HepG2 cells using 23006-1-AP (SCP2 antibody) at dilution of 1:50 and Alexa Fluor 488-conjugated AffiniPure Goat Anti-Rabbit IgG(H+L).



WB result of SCP2 antibody (23006-1-AP; 1:2000; incubated at room temperature for 1.5 hours) with sh-Control and sh-SCP2 transfected HEK-2993 cells.



1x10<sup>6</sup> HepG2 cells were intracellularly stained with 0.4 ug Anti-Human SCP2 (23006-1-AP) and CoraLite®488-Conjugated AffiniPure Goat Anti-Rabbit IgG(H+L) at dilution 1:1000 (red), or 0.4 ug Isotype Control. Cells were fixed with 4% PFA and permeabilized with Flow Cytometry Perm Buffer (PF00011-C).