

À des fins de recherche uniquement

Anticorps Polyclonal de lapin anti-FOXC2



Numéro de catalogue: 23066-1-AP

Phare

10 Publications

Informations de base

Numéro de catalogue:

23066-1-AP

Taille:

150ul, Concentration: 293 µg/ml by Bradford method using BSA as the standard;

Hôte:

Lapin

Isotype:

IgG

Immunogen Catalog Number:

AG19378

Numéro d'acquisition GenBank:

BC113437

Identification du gène (NCBI):

2303

Nom complet:

forkhead box C2 (MFH-1, mesenchyme forkhead 1)

MW calculé

501 aa, 54 kDa

MW observés:

56 kDa

Méthode de purification:

Purification par affinité contre l'antigène

Dilutions recommandées:

WB 1:500-1:1000

IF 1:50-1:500

Applications

Applications testées:

IF, WB, ELISA

Demandes citées:

IF, IHC, WB

Spécificité de l'espèce:

Humain, rat, souris

Espèces citées:

Humain, rat, souris

Contrôles positifs:

WB : cellules HCT 116, cellules MCF-7, tissu splénique de rat

IF : cellules A375,

Informations générales

Forkhead box protein C2 (FOXC2) also known as forkhead-related protein FKHL14 (FKHL14), transcription factor FKHL14, or mesenchyme fork head protein 1 (MFH1) is a protein that in humans is encoded by the FOXC2 gene. FOXC2 is a member of the fork head box (FOX) family of transcription factors. FOX transcription factors are expressed during development and are associated with a number of cellular and developmental differentiation processes. FOXC2 is required during early development of the kidneys, including differentiation of podocytes and maturation of the glomerular basement membrane. It is also involved in the early development of the heart. FOXC2 is also involved in cancer metastases. In particular, expression of FOXC2 is induced when epithelial cells undergo an epithelial-mesenchymal transition (EMT) and become mesenchymal looking cells. (PMID: 8674414 9169153 19935708) This antibody recognizes the 56 kDa FOXC2 protein, but the phosphorylated FOXC2 may be a 56-65 kDa protein.

Publications notables

Autrice	Pubmed ID	Journal	Application
Jianwen Liao	36106596	J Neurotrauma	WB
Fei-Xiang Lin	27904711	Am J Transl Res	WB
Qiu-Yue Lin	33783987	Clin Transl Med	WB

Stockage

Stockage:

Stocker à -20°C. Stable pendant un an après l'expédition.

Tampon de stockage:

PBS avec azoture de sodium à 0,02 % et glycérol à 50 % pH 7,3

L'aliquotage n'est pas nécessaire pour le stockage à -20C

*** Les 20ul contiennent 0,1% de BSA.

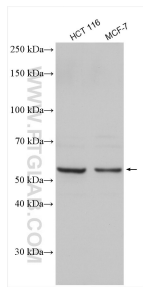
For technical support and original validation data for this product please contact:

T: 1 (888) 4PTGLAB (1-888-478-4522) (toll free in USA), or 1(312) 455-8498 (outside USA)

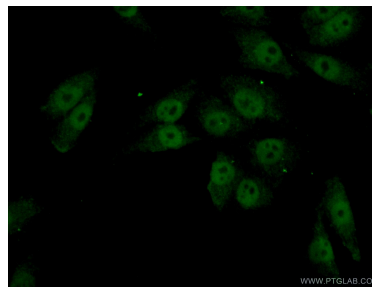
E: proteintech@ptglab.com
W: ptglab.com

This product is exclusively available under Proteintech Group brand and is not available to purchase from any other manufacturer.

Données de validation sélectionnées



Various lysates were subjected to SDS PAGE followed by western blot with 23066-1-AP (FOXC2 antibody) at dilution of 1:800 incubated at room temperature for 1.5 hours.



Immunofluorescent analysis of (4% PFA) fixed A375 cells using 23066-1-AP (FOXC2 antibody) at dilution of 1:50 and Alexa Fluor 488-conjugated AffiniPure Goat Anti-Rabbit IgG(H+L).