

À des fins de recherche uniquement

Anticorps Polyclonal de lapin anti-SUPT6H



Numéro de catalogue: 23073-1-AP

1 Publications

Informations de base

Numéro de catalogue:

23073-1-AP

Taille:

150ul, Concentration: 500 µg/ml by Nanodrop and 287 µg/ml by Bradford method using BSA as the standard;

Hôte:

Lapin

Isotype:

IgG

Immunogen Catalog Number:

AG19426

Numéro d'acquisition GenBank:

BC136524

Identification du gène (NCBI):

6830

Nom complet:

suppressor of Ty 6 homolog (S. cerevisiae)

MW calculé

1726 aa, 199 kDa

MW observés:

230 kDa

Méthode de purification:

Purification par affinité contre l'antigène

Dilutions recommandées:

WB 1:500-1:2000

IP 0.5-4.0 ug for IP and 1:500-1:2000 for WB

Applications

Applications testées:

IP, WB, ELISA

Demandes citées:

IP, WB

Spécificité de l'espèce:

Humain, rat, souris

Espèces citées:

Humain

Contrôles positifs:

WB : cellules HeLa, cellules HEK-293, cellules Jurkat

IP : cellules HEK-293,

Informations générales

SUPT6H (suppressor of Ty6 homolog), also known as SPT6, SPT6H, Tat-CT2 (Tat-cotransactivator 2 protein) or emb-5 in *C. elegans*, is a 1,726 amino acid protein that is highly conserved from yeast to humans. Expressed ubiquitously, SUPT6H localizes to the nucleus and contains one SH2 domain and one S1 domain. SUPT6H participates in both DRB (5,6-dichloro-1-beta-D-ribofuranosylbenzimidazole)-mediated transcriptional inhibition as well as the enhancement of transcriptional elongation by the RNA polymerase II (Pol II). SUPT6H interacts with the nuclear proteins SPT4 and SPT5, which comprise the DSIF (DRB-sensitivity-inducing factor) complex that binds RNA polymerase II, and directly regulates elongation. Via its C-terminus, SUPT6H can also interact with Histone H3. Due to alternative splicing events, three isoforms exist for SUPT6H. This antibody specifically recognizes the 230kd phosphorylated SUPT6H protein.

Publications notables

Autrice	Pubmed ID	Journal	Application
Roy Matkovic	35013187	Nat Commun	WB,IP

Stockage

Stockage:

Stocker à -20°C. Stable pendant un an après l'expédition.

Tampon de stockage:

PBS avec azoture de sodium à 0,02 % et glycérol à 50 % pH 7,3

L'aliquotage n'est pas nécessaire pour le stockage à -20C

*** Les 20ul contiennent 0,1% de BSA.

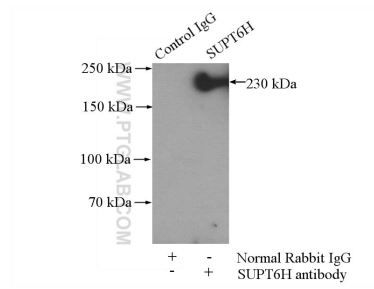
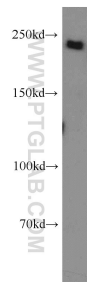
For technical support and original validation data for this product please contact:

T: 1 (888) 4PTGLAB (1-888-478-4522) (toll free in USA), or 1(312) 455-8498 (outside USA)

E: proteintech@ptglab.com
W: ptglab.com

This product is exclusively available under Proteintech Group brand and is not available to purchase from any other manufacturer.

Données de validation sélectionnées



HeLa cells were subjected to SDS PAGE followed by western blot with 23073-1-AP (SUPT6H antibody) at dilution of 1:1000 incubated at room temperature for 1.5 hours.

IP Result of anti-SUPT6H (IP:23073-1-AP, 4ug; Detection:23073-1-AP 1:1000) with HEK-293 cells lysate 1200ug.