

À des fins de recherche uniquement

Anticorps Polyclonal de lapin anti-smooth muscle actin



Numéro de catalogue: 23081-1-AP

29 Publications

Informations de base

Numéro de catalogue:

23081-1-AP

Taille:

150ul, Concentration: 300 µg/ml by Nanodrop;

Hôte:

Lapin

Isotype:

IgG

Immunogen Catalog Number:

AG19481

Numéro d'acquisition GenBank:

BC017554

Identification du gène (NCBI):

59

Nom complet:

actin, alpha 2, smooth muscle, aorta

MW calculé

377 aa, 42 kDa

MW observés:

42 kDa

Méthode de purification:

Purification par affinité contre l'antigène

Dilutions recommandées:

WB 1:1000-1:4000

IP 0.5-4.0 ug for IP and 1:500-1:2000 for WB

IHC 1:200-1:1000

Applications

Applications testées:

IHC, IP, WB, ELISA

Demandes citées:

IF, IHC, WB

Spécificité de l'espèce:

Humain, rat, souris

Espèces citées:

Humain, rat, souris

Remarque-IHC: il est suggéré de démasquer l'antigène avec un tampon de TE buffer pH 9,0; (*) À défaut, le démasquage de l'antigène peut être effectué avec un tampon citrate pH 6,0.

Contrôles positifs:

WB: tissu cardiaque de souris, tissu adipeux brun de souris, tissu cardiaque de rat, tissu de muscle squelettique de souris, tissu hépatique de souris, tissu rénal de souris

IP: tissu cardiaque de souris,

IHC: tissu cardiaque humain, tissu de cancer du foie humain, tissu de côlon humain, tissu de muscle squelettique de souris, tissu de muscle squelettique humain, tissu d'hystéromyome humain, tissu d'intestin grêle humain, tissu hépatique humain, tissu stroma tumoral

Informations générales

ACTA2 (also known as α -smooth muscle actin or α -SMA) belongs to the actin family. Actins are highly conserved proteins that are involved in various types of cell motility and are ubiquitously expressed in all eukaryotic cells. ACTA2 is primarily expressed in vascular smooth muscle and anti-ACTA2 is commonly used to marker smooth muscle cells. This antibody is specific to the ACTA2. It selectively stains the vascular smooth muscle but not cardiac or skeletal muscle.

Publications notables

Autrice	Pubmed ID	Journal	Application
Jan Krivanek	32968047	Nat Commun	IF
Yong He	25201080	Biochim Biophys Acta	WB
Jing Guo	28902355	Int J Oncol	IHC

Stockage

Stockage:

Stocker à -20°C. Stable pendant un an après l'expédition.

Tampon de stockage:

PBS avec azoture de sodium à 0,02 % et glycérol à 50 % pH 7,3

L'aliquotage n'est pas nécessaire pour le stockage à -20C

***** Les 20ul contiennent 0,1% de BSA.**

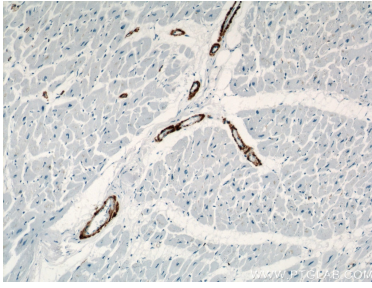
For technical support and original validation data for this product please contact:

T: 1 (888) 4PTGLAB (1-888-478-4522) (toll free in USA), or 1(312) 455-8498 (outside USA)

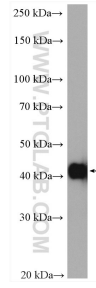
E: proteintech@ptglab.com
W: ptglab.com

This product is exclusively available under Proteintech Group brand and is not available to purchase from any other manufacturer.

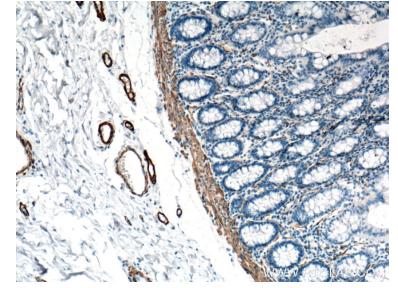
Données de validation sélectionnées



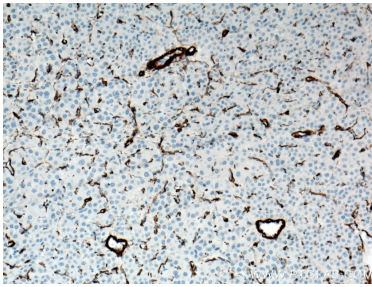
Immunohistochemical analysis of paraffin-embedded human heart using 23081-1-AP (ACTA2/smooth muscle actin antibody) at dilution of 1:500 (under 10x lens).



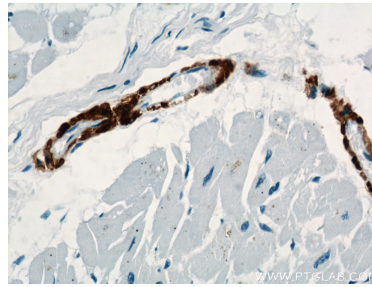
mouse heart tissue were subjected to SDS PAGE followed by western blot with 23081-1-AP (ACTA2/smooth muscle actin antibody) at dilution of 1:2000 incubated at room temperature for 1.5 hours.



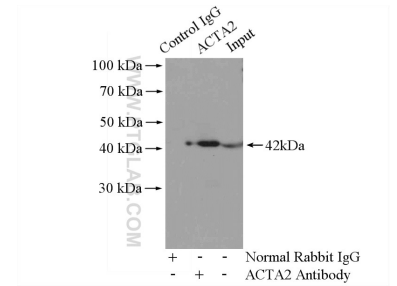
Immunohistochemical analysis of paraffin-embedded human colon tissue slide using 23081-1-AP (ACTA2/smooth muscle actin antibody) at dilution of 1:6400 (under 10x lens). Heat mediated antigen retrieval with Tris-EDTA buffer (pH 9.0).



Immunohistochemical analysis of paraffin-embedded human liver cancer tissue slide using 23081-1-AP (ACTA2/smooth muscle actin antibody) at dilution of 1:3200 (under 10x lens). Heat mediated antigen retrieval with Tris-EDTA buffer (pH 9.0).



Immunohistochemical analysis of paraffin-embedded human heart using 23081-1-AP (ACTA2/smooth muscle actin antibody) at dilution of 1:500 (under 40x lens).



IP Result of anti-a-SMA specific (IP:23081-1-AP, 4ug; Detection:23081-1-AP 1:1000) with mouse heart tissue lysate 3200ug.