

À des fins de recherche uniquement

# Anticorps Polyclonal de lapin anti-XRN1



Numéro de catalogue: 23108-1-AP

1 Publications

## Informations de base

<b>Numéro de catalogue:</b> 23108-1-AP	<b>Numéro d'acquisition GenBank:</b> BC078146	<b>Méthode de purification:</b> Purification par affinité contre l'antigène
<b>Taille:</b> 150ul , Concentration: 550 µg/ml by Nanodrop and 333 µg/ml by Bradford method using BSA as the standard;	<b>Identification du gène (NCBI):</b> 54464	<b>Dilutions recommandées:</b> WB 1:500-1:1000 IHC 1:20-1:200 IF 1:20-1:200
<b>Hôte:</b> Lapin	<b>Nom complet:</b> 5'-3' exoribonuclease 1	
<b>Isotype:</b> IgG	<b>MW calculé:</b> 1706 aa, 194 kDa	
<b>Immunogen Catalog Number:</b> AG19398	<b>MW observés:</b> 175 kDa	

## Applications

### Applications testées:

IF, IHC, WB, ELISA

### Demandes citées:

WB

### Spécificité de l'espèce:

Humain

### Espèces citées:

Humain

**Remarque-IHC: il est suggéré de démasquer l'antigène avec un tampon de TE buffer pH 9,0; (\*) A défaut, 'le démasquage de l'antigène peut être 'effectué avec un tampon citrate pH 6,0.**

### Contrôles positifs:

WB : cellules HeLa,

IHC : tissu cardiaque humain, tissu cérébral humain

IF : cellules HeLa,

## Informations générales

Exoribonuclease I (XRN1), also known as Sep1 or Rar5, is a 1,694-amino acid protein that functions as the major cytoplasmic 5 prime to 3 prime exoribonuclease and plays an important role in mRNA turnover. XRN1 may also function in the microtubular cytoskeleton as well as in DNA recombination and replication. XRN1 induces the expression of stress granules (SGs), cytoplasmic aggregates of stalled translational preinitiation complexes that accumulate during stress, and GW bodies/processing bodies (PBs), distinct cytoplasmic sites of mRNA degradation. There are several isoforms of XRN1 that are produced as a result of alternative splicing events. Loss of XRN1 markedly affects cell growth rates. This antibody is specific to the XRN1 protein.

## Publications notables

Autrice	Pubmed ID	Journal	Application
Ruihui Xie	36939377	Cancer Res	WB

## Stockage

### Stockage:

Stocker à -20°C. Stable pendant un an après l'expédition.

### Tampon de stockage:

PBS avec azoture de sodium à 0,02 % et glycérol à 50 % pH 7,3

L'aliquotage n'est pas nécessaire pour le stockage à -20C

\*\*\* Les 20ul contiennent 0,1% de BSA.

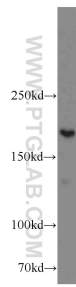
For technical support and original validation data for this product please contact:

T: 1 (888) 4PTGLAB (1-888-478-4522) (toll free in USA), or 1(312) 455-8498 (outside USA)

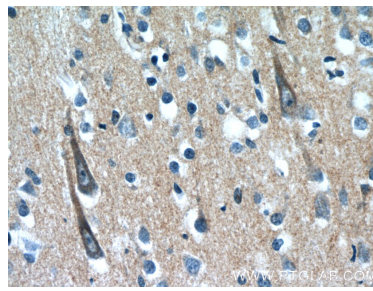
E: [proteintech@ptglab.com](mailto:proteintech@ptglab.com)  
W: [ptglab.com](http://ptglab.com)

This product is exclusively available under Proteintech Group brand and is not available to purchase from any other manufacturer.

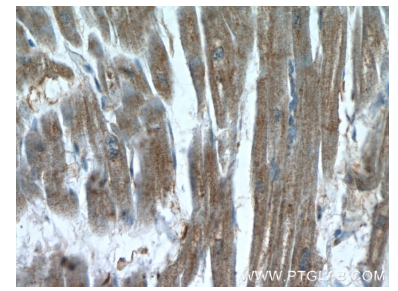
## Données de validation sélectionnées



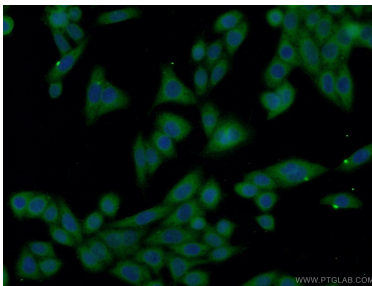
HeLa cells were subjected to SDS PAGE followed by western blot with 23108-1-AP (XRN1 antibody) at dilution of 1:600 incubated at room temperature for 1.5 hours.



Immunohistochemical analysis of paraffin-embedded human brain slide using 23108-1-AP (XRN1 Antibody) at dilution of 1:50.



Immunohistochemical analysis of paraffin-embedded human heart slide using 23108-1-AP (XRN1 Antibody) at dilution of 1:50.



Immunofluorescent analysis of HeLa cells using 23108-1-AP (XRN1 antibody) at dilution of 1:50 and Alexa Fluor 488-conjugated AffiniPure Goat Anti-Rabbit IgG(H+L).