

À des fins de recherche uniquement

Anticorps Polyclonal de lapin anti-AFAF/EQTN



Numéro de catalogue: 23168-1-AP

Informations de base

Numéro de catalogue: 23168-1-AP	Numéro d'acquisition GenBank: BC137351	Méthode de purification: Purification par affinité contre l'antigène
Taille: 150ul, Concentration: 1500 µg/ml by Nanodrop and 647 µg/ml by Bradford method using BSA as the standard;	Identification du gène (NCBI): 54586	Dilutions recommandées: WB 1:500-1:2000 IF 1:10-1:100
Hôte: Lapin	Nom complet: chromosome 9 open reading frame 11	
Isotype: IgG	MW calculé: 294 aa, 33 kDa	
Immunogen Catalog Number: AG19656	MW observés: 27-29 kDa	

Applications

Applications testées: IF, WB, ELISA	Contrôles positifs: WB : cellules HepG2, cellules HeLa IF : cellules HepG2,
Spécificité de l'espèce: Humain	

Informations générales

The AFAF gene (also known as EQTN and C9orf11) encodes a membrane protein that is specifically localized to the acrosomal membrane. AFAF is involved in the process of fertilization and in acrosome biogenesis. Expression analysis demonstrates that AFAF is highly expressed in the testis, although minor expression was seen in other tissues. AFAF has 3 isoforms with molecular weights of 14, 29, and 33 kDa. However, there is an article that detects that the molecular weight of mouse testis is between 40-65 kDa (PMID: 19605790).

Stockage

Stockage:
Stocker à -20°C. Stable pendant un an après l'expédition.
Tampon de stockage:
PBS avec azoture de sodium à 0,02 % et glycérol à 50 % pH 7,3
L'aliquotage n'est pas nécessaire pour le stockage à -20C

***** Les 20ul contiennent 0,1% de BSA.**

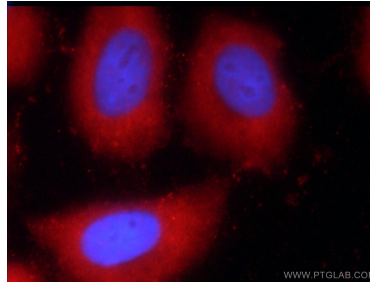
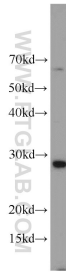
For technical support and original validation data for this product please contact:

T: 1 (888) 4PTGLAB (1-888-478-4522) (toll free in USA), or 1(312) 455-8498 (outside USA)

E: proteintech@ptglab.com
W: ptglab.com

This product is exclusively available under Proteintech Group brand and is not available to purchase from any other manufacturer.

Données de validation sélectionnées



HepG2 cells were subjected to SDS PAGE followed by western blot with 23168-1-AP (AFAF/EQTN antibody) at dilution of 1:2000 incubated at room temperature for 1.5 hours.

Immunofluorescent analysis of HepG2 cells using 23168-1-AP (AFAF/EQTN antibody) at dilution of 1:25 and Rhodamine-Goat anti-Rabbit IgG.