

À des fins de recherche uniquement

# Anticorps Polyclonal de lapin anti-Claspin



Numéro de catalogue: 23206-1-AP

2 Publications

## Informations de base

Numéro de catalogue:  
23206-1-AP

Taille:  
150ul, Concentration: 500 µg/ml by Nanodrop and 293 µg/ml by Bradford method using BSA as the standard;

Hôte:  
Lapin

Isotype:  
IgG

Immunogen Catalog Number:  
AG19637

Numéro d'acquisition GenBank:  
BC137279

Identification du gène (NCBI):  
63967

Nom complet:  
claspin homolog (*Xenopus laevis*)

MW calculé  
1339 aa, 151 kDa

MW observés:  
240 kDa

Méthode de purification:  
Purification par affinité contre l'antigène

Dilutions recommandées:  
WB 1:200-1:1000  
IP 0.5-4.0 ug for IP and 1:500-1:2000 for WB  
IF 1:20-1:200

## Applications

Applications testées:  
IF, IP, WB, ELISA

Demandes citées:  
WB

Spécificité de l'espèce:  
Humain

Espèces citées:  
Humain

Contrôles positifs:

WB : cellules HEK-293,

IP : cellules HEK-293,

IF : cellules HepG2, cellules HeLa

## Informations générales

CLSPN, also named as Claspin, is a 1339 amino acid protein, which belongs to the claspin family. CLSPN localizes in the nucleus and is highly expressed at S/G2 phases of the cell cycle. CLSPN is required for checkpoint mediated cell cycle arrest in response to inhibition of DNA replication or to DNA damage induced by both ionizing and UV irradiation. CLSPN plays a potentially critical role in replication checkpoint control in cells and mediating phosphorylation and activation of checkpoint protein kinases. The calculated molecular weight of CLSPN is 151 kDa, but the modified protein is about 220-240 kDa.

## Publications notables

Autrice	Pubmed ID	Journal	Application
Chao Wang	28350092	Int J Oncol	WB, IHC
Uma Thanigai Arasu	31820036	Cell Mol Life Sci	WB, IHC

## Stockage

Stockage:

Stocker à -20°C. Stable pendant un an après l'expédition.

Tampon de stockage:

PBS avec azoture de sodium à 0,02 % et glycérol à 50 % pH 7,3

L'aliquotage n'est pas nécessaire pour le stockage à -20C

\*\*\* Les 20ul contiennent 0,1% de BSA.

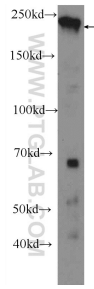
For technical support and original validation data for this product please contact:

T: 1 (888) 4PTGLAB (1-888-478-4522) (toll free in USA), or 1(312) 455-8498 (outside USA)

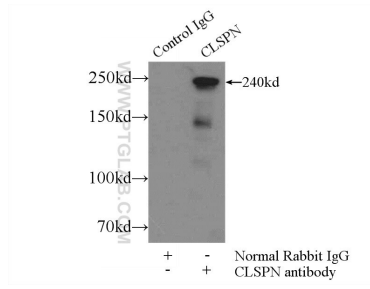
E: proteintech@ptglab.com  
W: ptglab.com

This product is exclusively available under Proteintech Group brand and is not available to purchase from any other manufacturer.

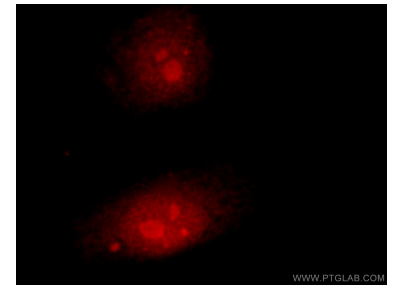
## Données de validation sélectionnées



HEK-293 cells were subjected to SDS PAGE followed by western blot with 23206-1-AP (Claspin antibody at dilution of 1:300 incubated at room temperature for 1.5 hours.



IP Result of anti-Claspin (IP:23206-1-AP, 5ug; Detection:23206-1-AP 1:1000) with HEK-293 cells lysate 2400ug.



Immunofluorescent analysis of HepG2 cells using 23206-1-AP (Claspin antibody) at dilution of 1:50 and Rhodamine-Goat anti-Rabbit IgG.