

À des fins de recherche uniquement

Anticorps Polyclonal de lapin anti-WT1



Numéro de catalogue: 23235-1-AP

Informations de base

Numéro de catalogue:

23235-1-AP

Taille:

150ul

Hôte:

Lapin

Isotype:

IgG

Immunogen Catalog Number:

AG19541

Numéro d'acquisition GenBank:

BC032861

Identification du gène (NCBI):

7490

Nom complet:

Wilms tumor 1

MW calculé

449 aa, 49 kDa, 57 kDa

Méthode de purification:

Purification par affinité contre l'antigène

Dilutions recommandées:

WB 1:200-1:1000

Applications

Applications testées:

WB, ELISA

Spécificité de l'espèce:

Humain

Contrôles positifs:

WB : tissu rénal de souris,

Informations générales

The WT1 gene encodes a zinc finger DNA-binding protein that acts as a transcriptional activator or repressor depending on the cellular or chromosomal context, and it is required for normal formation of the genitourinary system and mesothelial tissues. WT1 inhibits apoptosis through p53 and Bcl-2 and also inhibits the differentiation of leukemic cells. Function of WT1 may be isoform-specific: isoforms lacking the KTS motif may act as transcription factors. Isoforms containing the KTS motif may bind mRNA and play a role in mRNA metabolism or splicing. Isoform 1 has lower affinity for DNA, and can bind RNA.

Stockage

Stockage:

Stocker à -20°C. Stable pendant un an après l'expédition.

Tampon de stockage:

PBS avec azoture de sodium à 0,02 % et glycérol à 50 % pH 7,3

L'aliquotage n'est pas nécessaire pour le stockage à -20C

*** Les 20ul contiennent 0,1% de BSA.

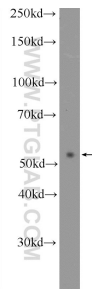
For technical support and original validation data for this product please contact:

T: 1 (888) 4PTGLAB (1-888-478-4522) (toll free in USA), or 1(312) 455-8498 (outside USA)

E: proteintech@ptglab.com
W: ptglab.com

This product is exclusively available under Proteintech Group brand and is not available to purchase from any other manufacturer.

Données de validation sélectionnées



mouse kidney tissue were subjected to SDS PAGE followed by western blot with 23235-1-AP (WT1 Antibody) at dilution of 1:300 incubated at room temperature for 1.5 hours.