

À des fins de recherche uniquement

Anticorps Polyclonal de lapin anti-TBX18



Numéro de catalogue: 23237-1-AP

2 Publications

Informations de base

Numéro de catalogue:
23237-1-AP

Taille:
150ul, Concentration: 600 µg/ml by Nanodrop and 353 µg/ml by Bradford method using BSA as the standard;

Hôte:
Lapin

Isotype:
IgG

Immunogen Catalog Number:
AG19258

Numéro d'acquisition GenBank:
BC157841

Identification du gène (NCBI):
9096

Nom complet:
T-box 18

MW calculé:
607 aa, 65 kDa

MW observés:
65-70 kDa

Méthode de purification:
Purifié par affinité contre l'antigène

Dilutions recommandées:
WB 1:500-1:2000
IHC 1:20-1:200

Applications

Applications testées:
IHC, WB, ELISA

Demandes citées:
IF, WB

Spécificité de l'espèce:
Humain, rat, souris

Espèces citées:
Humain, rat

Remarque-IHC: il est suggéré de démasquer l'antigène avec un tampon de TE buffer pH 9,0; (*) A défaut, le démasquage de l'antigène peut être effectué avec un tampon citrate pH 6,0.

Contrôles positifs:

WB : cellules HeLa, cellules HEK-293, tissu placentaire humain, tissu rénal de rat, tissu rénal de souris

IHC : tissu rénal humain, tissu de cancer du sein humain

Informations générales

The T-box (Tbx) motif is present in a family of genes whose structural features and expression patterns support their involvement in developmental gene regulation. The Tbx gene family are largely conserved throughout metazoan evolution, and these genes code for putative transcription factors that share a uniquely defining DNA-binding domain. Tbx genes are a family of developmental regulators with more than 20 members recently identified in invertebrates and vertebrates. Mutations in Tbx genes are associated with the onset of several human diseases. Our understanding of functional mechanisms of Tbx products has come mainly from the prototypical T/Brachyury, which is a transcription activator. The Tbx genes constitute a family of transcriptional regulatory genes that are implicated in a variety of developmental processes ranging from the formation of germ layers to the organizational patterning of the central nervous system. This antibody specifically reacts with the 65kd TBX18 protein.

Publications notables

Autrice	Pubmed ID	Journal	Application
Xiuya Li	34488017	EBioMedicine	IF
Pei Xu	36484369	Mol Med Rep	WB

Stockage

Stockage:

Stocker à -20°C. Stable pendant un an après l'expédition.

Tampon de stockage:

PBS avec azote de sodium à 0,02 % et glycérol à 50 % pH 7,3

L'aliquotage n'est pas nécessaire pour le stockage à -20C

*** Les 20ul contiennent 0,1% de BSA.

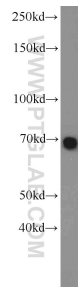
For technical support and original validation data for this product please contact:

T: 1 (888) 4PTGLAB (1-888-478-4522) (toll free in USA), or 1(312) 455-8498 (outside USA)

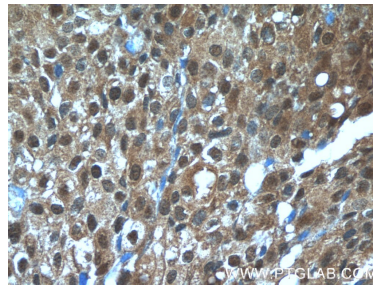
E: proteintech@ptglab.com
W: ptglab.com

This product is exclusively available under Proteintech Group brand and is not available to purchase from any other manufacturer.

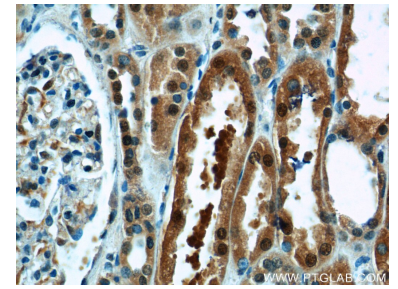
Données de validation sélectionnées



HeLa cells were subjected to SDS PAGE followed by western blot with 23237-1-AP (TBX18 antibody) at dilution of 1:1000 incubated at room temperature for 1.5 hours.



Immunohistochemical analysis of paraffin-embedded human breast cancer tissue slide using 23237-1-AP (TBX18 Antibody) at dilution of 1:50 (under 40x lens).



Immunohistochemical analysis of paraffin-embedded human kidney tissue slide using 23237-1-AP (TBX18 Antibody) at dilution of 1:50 (under 40x lens).