

À des fins de recherche uniquement

Anticorps Polyclonal de lapin anti-IDH2



Numéro de catalogue: 23254-1-AP

1 Publications

Informations de base

Numéro de catalogue: 23254-1-AP	Numéro d'acquisition GenBank: BC009244	Méthode de purification: Purification par affinité contre l'antigène
Taille: 150ul , Concentration: 850 µg/ml by Nanodrop and 473 µg/ml by Bradford method using BSA as the standard;	Identification du gène (NCBI): 3418	Dilutions recommandées: WB 1:500-1:3000 IHC 1:20-1:200 IF 1:20-1:200
Hôte: Lapin	Nom complet: isocitrate dehydrogenase 2 (NADP+), mitochondrial	
Isotype: IgG	MW calculé 452 aa, 51 kDa	
Immunogen Catalog Number: AG19748	MW observés: 41-47 kDa	

Applications

Applications testées:

IF, IHC, WB, ELISA

Demandes citées:

IF, WB

Spécificité de l'espèce:

Humain, rat, souris

Espèces citées:

Humain, souris

Remarque-IHC: il est suggéré de démasquer l'antigène avec un tampon de TE buffer pH 9,0; (*) A défaut, 'le démasquage de l'antigène peut être 'effectué avec un tampon citrate pH 6,0.

Contrôles positifs:

WB : cellules HEK-293, cellules DU 145, cellules Jurkat, tissu cérébral de souris, tissu hépatique de rat, tissu hépatique de souris, tissu rénal de rat, tissu rénal de souris

IHC : tissu cardiaque humain,

IF : cellules HepG2,

Informations générales

IDH2, also named as IDP and ICD-M, belongs to the isocitrate and isopropylmalate dehydrogenases family. It plays a role in intermediary metabolism and energy production. IDH2 is a mitochondrial NADP-dependent isocitrate dehydrogenase that catalyzes oxidative decarboxylation of isocitrate to alpha-ketoglutarate, producing NADPH. It may tightly associate or interact with the pyruvate dehydrogenase complex. IDH1 and IDH2 mutations could also contribute to tumorigenesis and cancer progression through increased mutagenesis. IDH2 has 2 isoforms with the MW of 51 kDa and 45 kDa, and the mature form is about 47 kDa and 41 kDa with the N-terminal transit peptide cleaved. This antibody is specific to IDH2.

Publications notables

Autrice	Pubmed ID	Journal	Application
Shubhi Srivastava	37468519	Nat Commun	WB,IF

Stockage

Stockage:

Stocker à -20°C. Stable pendant un an après l'expédition.

Tampon de stockage:

PBS avec azote de sodium à 0,02 % et glycérol à 50 % pH 7,3

L'aliquotage n'est pas nécessaire pour le stockage à -20C

*** Les 20ul contiennent 0,1% de BSA.

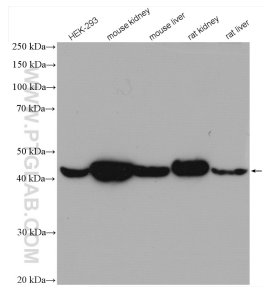
For technical support and original validation data for this product please contact:

T: 1 (888) 4PTGLAB (1-888-478-4522) (toll free in USA), or 1(312) 455-8498 (outside USA)

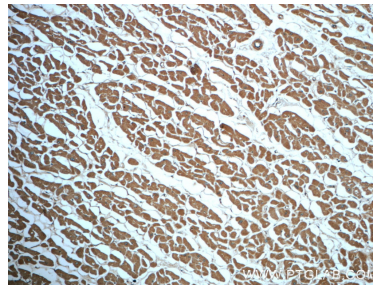
E: proteintech@ptglab.com
W: ptglab.com

This product is exclusively available under Proteintech Group brand and is not available to purchase from any other manufacturer.

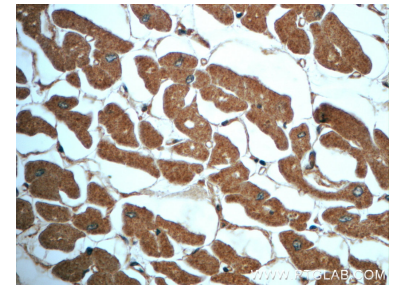
Données de validation sélectionnées



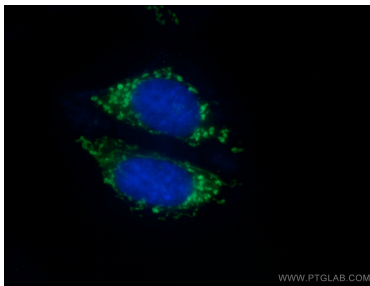
Various lysates were subjected to SDS PAGE followed by western blot with 23254-1-AP (IDH2 antibody) at dilution of 1:1500 incubated at room temperature for 1.5 hours.



Immunohistochemical analysis of paraffin-embedded human heart slide using 23254-1-AP (IDH2 Antibody) at dilution of 1:50.



Immunohistochemical analysis of paraffin-embedded human heart slide using 23254-1-AP (IDH2 Antibody) at dilution of 1:50.



Immunofluorescent analysis of (10% Formaldehyde) fixed HepG2 cells using 23254-1-AP (IDH2 antibody) at dilution of 1:50 and Alexa Fluor 488-conjugated AffiniPure Goat Anti-Rabbit IgG(H+L).