

À des fins de recherche uniquement

Anticorps Polyclonal de lapin anti-WWTR1



Numéro de catalogue: 23306-1-AP

Phare

38 Publications

Informations de base

Numéro de catalogue:

23306-1-AP

Taille:

150ul, Concentration: 460 µg/ml by Nanodrop;

Hôte:

Lapin

Isotype:

IgG

Immunogen Catalog Number:

AG19659

Numéro d'acquisition GenBank:

BC014052

Identification du gène (NCBI):

25937

Nom complet:

WW domain containing transcription regulator 1

MW calculé

44 kDa

MW observés:

50 kDa

Méthode de purification:

Purification par affinité contre l'antigène

Dilutions recommandées:

WB 1:1000-1:8000

IP 0.5-4.0 ug for IP and 1:200-1:1000 for WB

IF 1:50-1:500

Applications

Applications testées:

IF, IP, WB, ELISA

Demandes citées:

ChIP, CoIP, IF, IHC, IP, WB

Spécificité de l'espèce:

Humain

Espèces citées:

Humain, rat, souris

Contrôles positifs:

WB : cellules HeLa, cellules LN229, cellules MDA-MB-453s

IP : cellules MDA-MB-453s,

IF : tissu rénal de rat,

Informations générales

TAZ, also referred as WWTR1, is a transcriptional co-activator with a PDZ-binding motif that is regulated by its interaction with 14-3-3 protein. TAZ is expressed in many primary tumors, such as breast cancer, thyroid carcinoma, colorectal cancer, and glioma. TAZ has been reported to be one of the nuclear effectors of Hippo-related pathways that regulate organ size control, cancer stem cell (CSC) properties, and epithelial-mesenchymal transition (EMT). TAZ has been defined for its role in the nucleus, where it functions directly as a transcriptional regulator by interacting with several nuclear factors as Runx2/Cbfa1, NHERF-2, TEF-1, TBX5, PAX3, PAX8 and TTF-1.

Publications notables

Autrice	Pubmed ID	Journal	Application
Bang-Yi Lin	32969138	J Cell Mol Med	WB
Chunxu Luo	32914480	Phytother Res	WB
Wen Zhao	34490599	Histol Histopathol	WB,IHC

Stockage

Stockage:

Stocker à -20°C. Stable pendant un an après l'expédition.

Tampon de stockage:

PBS avec azoture de sodium à 0,02 % et glycérol à 50 % pH 7,3

L'aliquotage n'est pas nécessaire pour le stockage à -20C

*** Les 20ul contiennent 0,1% de BSA.

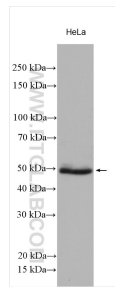
For technical support and original validation data for this product please contact:

T: 1 (888) 4PTGLAB (1-888-478-4522) (toll free in USA), or 1(312) 455-8498 (outside USA)

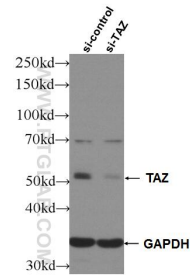
E: proteintech@ptglab.com
W: ptglab.com

This product is exclusively available under Proteintech Group brand and is not available to purchase from any other manufacturer.

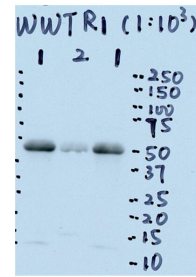
Données de validation sélectionnées



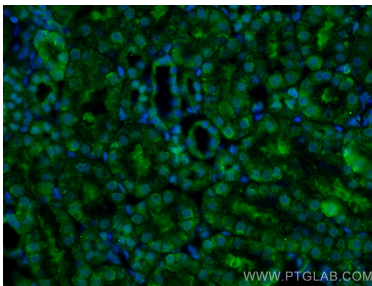
HeLa cells were subjected to SDS PAGE followed by western blot with 23306-1-AP (TAZ antibody) at dilution of 1:4000 incubated at room temperature for 1.5 hours.



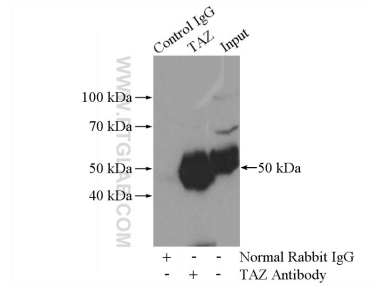
WB result of TAZ antibody (23306-1-AP; 1:8000; incubated at room temperature for 1.5 hours) with sh-Control and sh-TAZ transfected HeLa cells.



WB result of WWTR1 antibody (TAZ antibody, 23306-1-AP, 1:1000) with LN229 cell lysate by Dr. Xiaobing He. (Lane 1, LN229 (GBM cell line) cell lysate. 90 ug; Lane 2, LN229 growth inhibition treatment. 90 ug).



Immunofluorescent analysis of (4% PFA) fixed rat kidney tissue using WWTR1 antibody (23306-1-AP) at dilution of 1:200 and CoraLite®488-Conjugated AffiniPure Goat Anti-Rabbit IgG(H+L).



IP Result of anti-TAZ (IP:23306-1-AP, 4ug; Detection:23306-1-AP 1:300) with MDA-MB-453s cells lysate 2800ug.