

À des fins de recherche uniquement

Anticorps Polyclonal de lapin anti-Chromogranin A



Numéro de catalogue: 23342-1-AP

1 Publications

Informations de base

Numéro de catalogue:

23342-1-AP

Numéro d'acquisition GenBank:

BC006459

Méthode de purification:

Purification par affinité contre l'antigène

Taille:

150ul, Concentration: 1000 µg/ml by Nanodrop;

Identification du gène (NCBI):

1113

Dilutions recommandées:

IHC 1:200-1:800

Hôte:

Lapin

Nom complet:

chromogranin A (parathyroid secretory protein 1)

Isotype:

IgG

MW calculé

51 kDa

Immunogen Catalog Number:

AG19780

Applications

Applications testées:

IHC, ELISA

Contrôles positifs:

IHC : tissu pancréatique humain, tissu d'appendicite humaine, tissu de cancer du poumon humain, tissu de côlon de souris, tissu de côlon humain, tissu d'intestin grêle humain, tissu pancréatique de souris

Demandes citées:

WB

Spécificité de l'espèce:

Humain, souris

Espèces citées:

Humain

Remarque-IHC: il est suggéré de démasquer l'antigène avec un tampon de TE buffer pH 9,0; (*) À défaut, le démasquage de l'antigène peut être effectué avec un tampon citrate pH 6,0.

Informations générales

Chromogranin A is a member of the granin family of neuroendocrine secretory proteins. It is located in secretory vesicles of neurons and endocrine cells. Chromogranin A is the precursor to several functional peptides including vasostatin, pancreastatin, catestatin and parastatin. These peptides negatively modulate the neuroendocrine function of the releasing cell (autocrine) or nearby cells (paracrine). CgA is one of the most used tumor markers in NET's (neuroendocrine tumors), and elevated CgA concentrations have been demonstrated in serum or plasma of patients with different types of these tumors.

Publications notables

Autrice	Pubmed ID	Journal	Application
Buqing Ye	32449550	EMBO J	WB

Stockage

Stockage:

Stocker à -20°C. Stable pendant un an après l'expédition.

Tampon de stockage:

PBS avec azoture de sodium à 0,02 % et glycérol à 50 % pH 7,3

L'aliquotage n'est pas nécessaire pour le stockage à -20C

*** Les 20ul contiennent 0,1% de BSA.

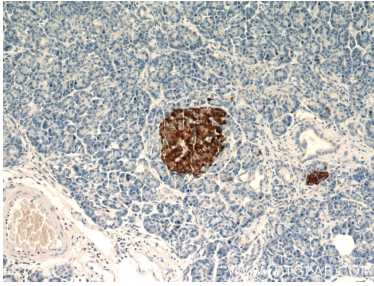
For technical support and original validation data for this product please contact:

T: 1 (888) 4PTGLAB (1-888-478-4522) (toll free in USA), or 1(312) 455-8498 (outside USA)

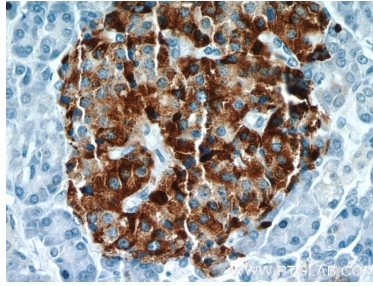
E: proteintech@ptglab.com
W: ptglab.com

This product is exclusively available under Proteintech Group brand and is not available to purchase from any other manufacturer.

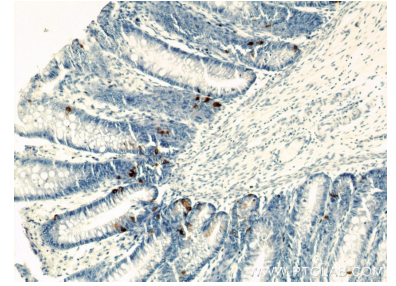
Données de validation sélectionnées



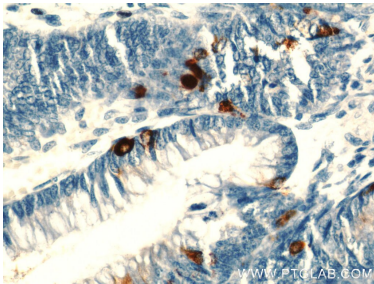
Immunohistochemical analysis of paraffin-embedded human pancreas using 23342-1-AP (Chromogranin A antibody) at dilution of 1:400 (under 10x lens).



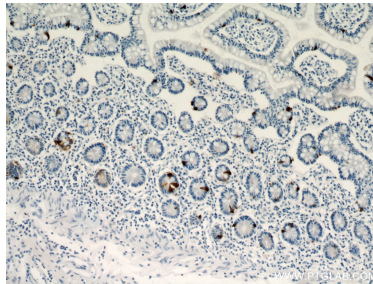
Immunohistochemical analysis of paraffin-embedded human pancreas using 23342-1-AP (Chromogranin A antibody) at dilution of 1:400 (under 40x lens).



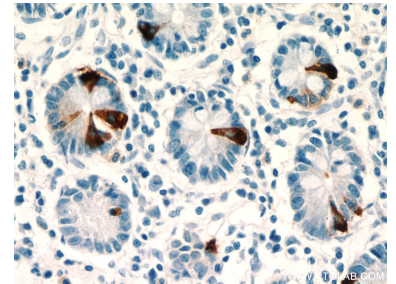
Immunohistochemical analysis of paraffin-embedded human colon using 23342-1-AP (Chromogranin A antibody) at dilution of 1:800 (under 10x lens).



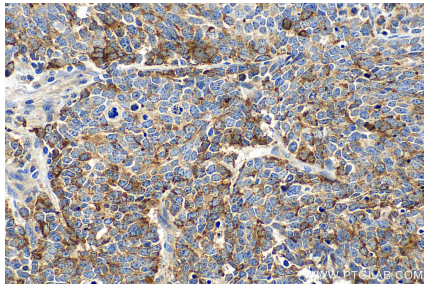
Immunohistochemical analysis of paraffin-embedded human colon using 23342-1-AP (Chromogranin A antibody) at dilution of 1:800 (under 40x lens).



Immunohistochemical analysis of paraffin-embedded human small intestine using 23342-1-AP (Chromogranin A antibody) at dilution of 1:800 (under 10x lens).



Immunohistochemical analysis of paraffin-embedded human small intestine using 23342-1-AP (Chromogranin A antibody) at dilution of 1:800 (under 40x lens).



Immunohistochemical analysis of paraffin-embedded human lung cancer tissue slide using 23342-1-AP (Chromogranin A antibody) at dilution of 1:600 (under 40x lens). Heat mediated antigen retrieval with Tris-EDTA buffer (pH 9.0).