

À des fins de recherche uniquement

Anticorps Polyclonal de lapin anti-FOLR1



Numéro de catalogue: 23355-1-AP

Phare

10 Publications

Informations de base

Numéro de catalogue: 23355-1-AP	Numéro d'acquisition GenBank: BC002947	Méthode de purification: Purification par affinité contre l'antigène
Taille: 150ul , Concentration: 650 µg/ml by Nanodrop;	Identification du gène (NCBI): 2348	Dilutions recommandées: WB 1:2000-1:12000 IHC 1:50-1:500 IF 1:20-1:200
Hôte: Lapin	Nom complet: folate receptor 1 (adult)	
Isotype: IgG	MW calculé: 257 aa, 30 kDa	
Immunogen Catalog Number: AG19959	MW observés: 38 kDa	

Applications

Applications testées: IF, IHC, WB, ELISA	Contrôles positifs: WB : cellules HeLa, cellules JAR IHC : tissu de cancer du sein humain, IF : cellules HeLa,
Demandes citées: IF, IHC, WB	
Spécificité de l'espèce: Humain	
Espèces citées: Humain, rat	

Remarque-IHC: il est suggéré de démasquer l'antigène avec un tampon de TE buffer pH 9,0; (*) À défaut, le démasquage de l'antigène peut être effectué avec un tampon citrate pH 6,0.

Informations générales

Folate receptor 1 (FOLR1), also known as folate receptor alpha or adult folate-binding protein (FBP), is a 38-kDa glycoprotein belonging to the folate receptor family (PMID:15094207; 23528302). The receptor binds to folate and reduced folic acid derivatives and mediates delivery of 5-methyltetrahydrofolate to the interior of cells. FOLR1 is a secreted protein that either anchors to membranes via a glycosyl-phosphatidylinositol linkage or exists in a soluble form. FOLR1 expression is often limited to the apical surfaces of epithelium in the lung, kidney and choroid plexus but is differentially overexpressed in a variety of solid tumors such as ovarian cancer, non-small cell lung cancer, breast cancer, kidney cancer and high-grade osteosarcoma (PMID: 23528302; 23357463).

Publications notables

Autrice	Pubmed ID	Journal	Application
Xiao Han	36054333	Hum Mutat	WB,IF
Divinah Manoharan	33974409	ACS Nano	WB,IHC
Jing Liu	33970635	J Am Chem Soc	WB

Stockage

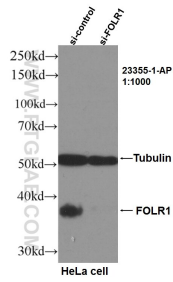
Stockage:
Stocker à -20°C. Stable pendant un an après l'expédition.
Tampon de stockage:
PBS avec azoture de sodium à 0,02 % et glycérol à 50 % pH 7,3
L'aliquotage n'est pas nécessaire pour le stockage à -20C

*** Les 20ul contiennent 0,1% de BSA.

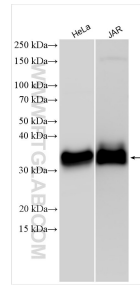
For technical support and original validation data for this product please contact:
T: 1 (888) 4PTGLAB (1-888-478-4522) (toll free in USA), or 1(312) 455-8498 (outside USA)
E: proteintech@ptglab.com
W: ptglab.com

This product is exclusively available under Proteintech Group brand and is not available to purchase from any other manufacturer.

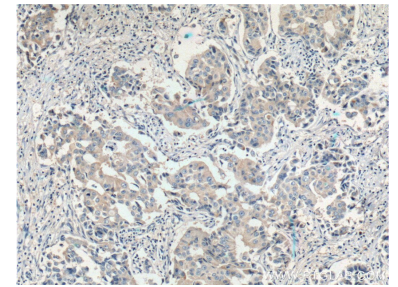
Données de validation sélectionnées



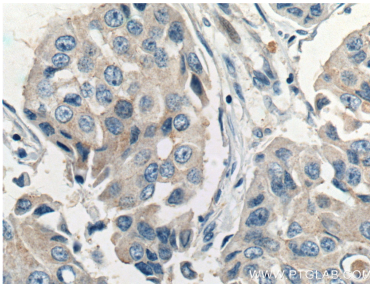
WB result of FOLR1 antibody (23355-1-AP, 1:1000) with si-Control and si-FOLR1 transfected HeLa cells.



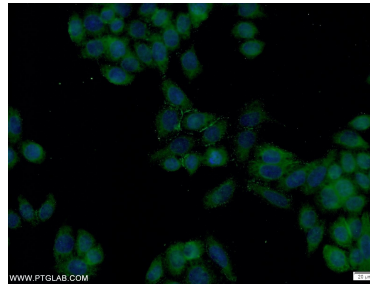
Various lysates were subjected to SDS PAGE followed by western blot with 23355-1-AP (FOLR1 antibody) at dilution of 1:6000 incubated at room temperature for 1.5 hours.



Immunohistochemical analysis of paraffin-embedded human breast cancer tissue slide using 23355-1-AP (FOLR1 Antibody) at dilution of 1:200 (under 10x lens). Heat mediated antigen retrieval with Tris-EDTA buffer (pH 9.0).



Immunohistochemical analysis of paraffin-embedded human breast cancer tissue slide using 23355-1-AP (FOLR1 Antibody) at dilution of 1:200 (under 40x lens). Heat mediated antigen retrieval with Tris-EDTA buffer (pH 9.0).



Immunofluorescent analysis of HeLa cells using 23355-1-AP (FOLR1 antibody) at dilution of 1:50 and Alexa Fluor 488-conjugated AffiniPure Goat Anti-Rabbit IgG(H+L).