

À des fins de recherche uniquement

Anticorps Polyclonal de lapin anti-FKBPL



Numéro de catalogue: 23369-1-AP

Informations de base

Numéro de catalogue: 23369-1-AP	Numéro d'acquisition GenBank: BC004168	Méthode de purification: Purification par affinité contre l'antigène
Taille: 150ul, Concentration: 1500 µg/ml by Nanodrop and 440 µg/ml by Bradford method using BSA as the standard;	Identification du gène (NCBI): 63943	Dilutions recommandées: WB 1:500-1:1000 IHC 1:100-1:400 IF 1:50-1:500
Hôte: Lapin	Nom complet: FK506 binding protein like	
Isotype: IgG	MW calculé: 349 aa, 38 kDa	
Immunogen Catalog Number: AG19702	MW observés: 42-48 kDa	

Applications

Applications testées: IF, IHC, WB, ELISA	Contrôles positifs: WB : cellules HeLa, IHC : tissu de tumeur ovarienne humain, IF : cellules HeLa,
Spécificité de l'espèce: Humain	
Remarque-IHC: il est suggéré de démasquer l'antigène avec un tampon de TE buffer pH 9.0; (*) À défaut, le démasquage de l'antigène peut être effectué avec un tampon citrate pH 6,0.	

Informations générales

FKBPL, also named as DIR1, NG7 and WISp39, has similarity to the immunophilin protein family, which plays a role in immunoregulation and basic cellular processes involving protein folding and trafficking. FKBPL Levels may be a prognostic indicator and determinant of response to endocrine therapy (PMID:20103631, 15664193). It can be detected the band between 38 kDa and 48 kDa by western blot.

Stockage

Stockage:
Stocker à -20°C. Stable pendant un an après l'expédition.
Tampon de stockage:
PBS avec azoture de sodium à 0,02 % et glycérol à 50 % pH 7,3
L'aliquotage n'est pas nécessaire pour le stockage à -20C

*** Les 20ul contiennent 0,1% de BSA.

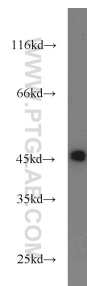
For technical support and original validation data for this product please contact:

T: 1 (888) 4PTGLAB (1-888-478-4522) (toll free in USA), or 1(312) 455-8498 (outside USA)

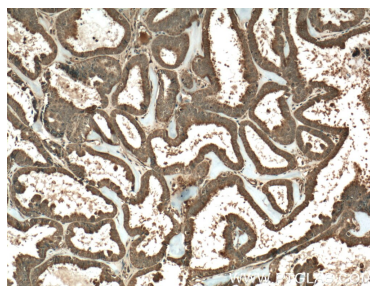
E: proteintech@ptglab.com
W: ptglab.com

This product is exclusively available under Proteintech Group brand and is not available to purchase from any other manufacturer.

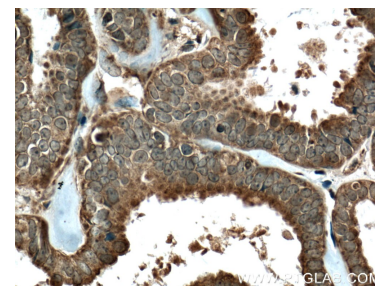
Données de validation sélectionnées



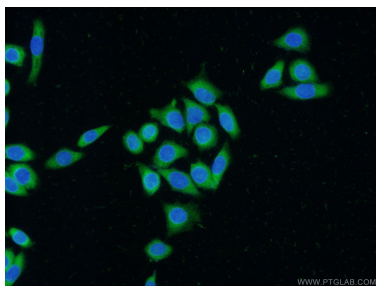
HeLa cells were subjected to SDS PAGE followed by western blot with 23369-1-AP (FKBPL antibody) at dilution of 1:800 incubated at room temperature for 1.5 hours.



Immunohistochemical analysis of paraffin-embedded human ovary tumor tissue slide using 23369-1-AP (FKBPL Antibody) at dilution of 1:200 (under 10x lens). Heat mediated antigen retrieval with Tris-EDTA buffer (pH 9.0).



Immunohistochemical analysis of paraffin-embedded human ovary tumor tissue slide using 23369-1-AP (FKBPL Antibody) at dilution of 1:200 (under 40x lens). Heat mediated antigen retrieval with Tris-EDTA buffer (pH 9.0).



Immunofluorescent analysis of (-20°C Ethanol) fixed HeLa cells using 23369-1-AP (FKBPL antibody) at dilution of 1:50 and Alexa Fluor 488-conjugated AffiniPure Goat Anti-Rabbit IgG(H+L).