

À des fins de recherche uniquement

Anticorps Polyclonal de lapin anti-MAN1A1



Numéro de catalogue: 23382-1-AP

Informations de base

Numéro de catalogue:
23382-1-AP

Taille:
150ul, Concentration: 800 µg/ml by
Nanodrop and 387 µg/ml by Bradford
method using BSA as the standard;

Hôte:
Lapin

Isotype:
IgG

Immunogen Catalog Number:
AG20060

Numéro d'acquisition GenBank:
BC065827

Identification du gène (NCBI):
4121

Nom complet:
mannosidase, alpha, class 1A,
member 1

MW calculé
653 aa, 73 kDa

MW observés:
68 kDa

Méthode de purification:
Purification par affinité contre
l'antigène

Dilutions recommandées:
WB 1:1000-1:6000
IP 0.5-4.0 ug for IP and 1:200-1:1000
for WB
IF 1:200-1:800

Applications

Applications testées:
IF, IP, WB, ELISA

Spécificité de l'espèce:
Humain, rat, souris

Contrôles positifs:

WB : cellules HEK-293, cellules HepG2, cellules MCF-7,
tissu hépatique de rat, tissu hépatique de souris

IP : cellules MCF-7,

IF : cellules HepG2,

Informations générales

MAN1A1, also known as HUMM3, HUMM9, MAN9, belongs to the glycosyl hydrolase 47 family. MAN1A1 is a type II transmembrane protein and catalyzes the hydrolysis of three terminal mannose residues from peptide-bound Man(9)-GlcNAc(2) oligosaccharides. MAN1A1 is a tumor-suppressor and low levels of expression of MAN1A1 correlate with poor prognosis in breast cancer patients (PMID: 29381688).

Stockage

Stockage:

Stocker à -20°C. Stable pendant un an après l'expédition.

Tampon de stockage:

PBS avec azoture de sodium à 0,02 % et glycérol à 50 % pH 7,3

L'aliquotage n'est pas nécessaire pour le stockage à -20C

*** Les 20ul contiennent 0,1% de BSA.

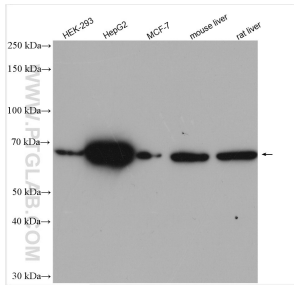
For technical support and original validation data for this product please contact:

T: 1 (888) 4PTGLAB (1-888-478-4522) (toll free
in USA), or 1(312) 455-8498 (outside USA)

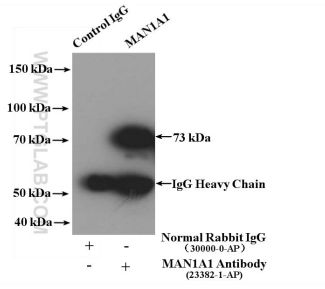
E: proteintech@ptglab.com
W: ptglab.com

This product is exclusively available under Proteintech Group brand and is not available to purchase from any other manufacturer.

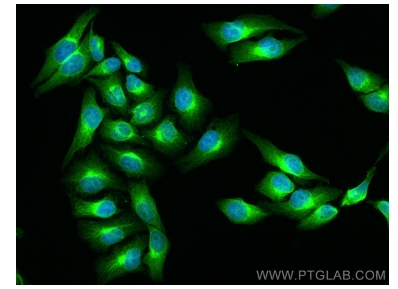
Données de validation sélectionnées



Various lysates were subjected to SDS PAGE followed by western blot with 23382-1-AP (MAN1A1 antibody) at dilution of 1:3000 incubated at room temperature for 1.5 hours.



IP Result of anti-MAN1A1 (IP:23382-1-AP, 4ug; Detection:23382-1-AP 1:300) with MCF-7 cells lysate 2000ug.



Immunofluorescent analysis of (4% PFA) fixed HepG2 cells using MAN1A1 antibody (23382-1-AP) at dilution of 1:400 and CoraLite@488-Conjugated AffiniPure Goat Anti-Rabbit IgG(H+L).