

À des fins de recherche uniquement

Anticorps Polyclonal de lapin anti-ADH7



Numéro de catalogue: 23425-1-AP

1 Publications

Informations de base

Numéro de catalogue:

23425-1-AP

Taille:

150ul , Concentration: 900 µg/ml by Nanodrop and 493 µg/ml by Bradford method using BSA as the standard;

Hôte:

Lapin

Isotype:

IgG

Immunogen Catalog Number:

AG19340

Numéro d'acquisition GenBank:

BC131512

Identification du gène (NCBI):

131

Nom complet:

alcohol dehydrogenase 7 (class IV), mu or sigma polypeptide

MW calculé

386 aa, 41 kDa

MW observés:

45-47 kDa

Méthode de purification:

Purification par affinité contre l'antigène

Dilutions recommandées:

WB 1:500-1:2000

IHC 1:20-1:200

IF 1:20-1:200

Applications

Applications testées:

IF, IHC, WB, ELISA

Demandes citées:

WB

Spécificité de l'espèce:

Humain

Espèces citées:

souris

Remarque-IHC: il est suggéré de démasquer l'antigène avec un tampon de TE buffer pH 9,0; (*) A défaut, 'le démasquage de l'antigène peut être 'effectué avec un tampon citrate pH 6,0.

Contrôles positifs:

WB : cellules HeLa, cellules A549, cellules HEK-293

IHC : tissu hépatique humain,

IF : cellules HepG2,

Informations générales

ADH7 (Alcohol dehydrogenase class 4 mu/sigma chain) is also named as gastric alcohol dehydrogenase, retinol dehydrogenase and belongs to the zinc-containing alcohol dehydrogenase family. The ubiquitous expression pattern of ADH7 during embryogenesis has led to the notion that the enzymatic conversion of retinol to retinal occurs more or less uniformly and plays no role in the spatial or temporal regulation of RA synthesis during embryonic development (PMID:17473173). It has 2 isoforms produced by alternative splicing and can exist as a homodimer (PMID:18479436).

Publications notables

Autrice	Pubmed ID	Journal	Application
Guanqi Dai	37335109	Aging (Albany NY)	WB

Stockage

Stockage:

Stocker à -20°C. Stable pendant un an après l'expédition.

Tampon de stockage:

PBS avec azoture de sodium à 0,02 % et glycérol à 50 % pH 7,3

L'aliquotage n'est pas nécessaire pour le stockage à -20C

*** Les 20ul contiennent 0,1% de BSA.

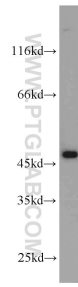
For technical support and original validation data for this product please contact:

T: 1 (888) 4PTGLAB (1-888-478-4522) (toll free in USA), or 1(312) 455-8498 (outside USA)

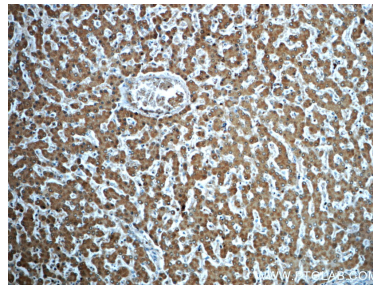
E: proteintech@ptglab.com
W: ptglab.com

This product is exclusively available under Proteintech Group brand and is not available to purchase from any other manufacturer.

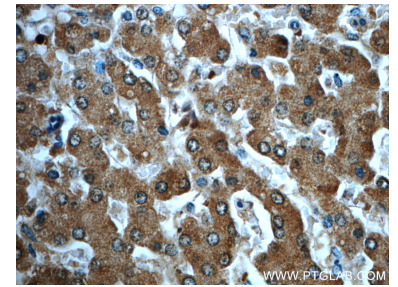
Données de validation sélectionnées



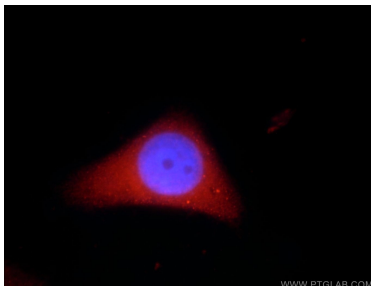
HeLa cells were subjected to SDS PAGE followed by western blot with 23425-1-AP (ADH7 antibody) at dilution of 1:1000 incubated at room temperature for 1.5 hours.



Immunohistochemical analysis of paraffin-embedded human liver slide using 23425-1-AP (ADH7 Antibody) at dilution of 1:50.



Immunohistochemical analysis of paraffin-embedded human liver slide using 23425-1-AP (ADH7 Antibody) at dilution of 1:50.



Immunofluorescent analysis of HepG2 cells, using ADH7 antibody 23425-1-AP at 1:50 dilution and Rhodamine-labeled goat anti-rabbit IgG (red). Blue pseudocolor = DAPI (fluorescent DNA dye).