

À des fins de recherche uniquement

Anticorps Polyclonal de lapin anti-PCF11



Numéro de catalogue: 23540-1-AP

Phare

4 Publications

Informations de base

Numéro de catalogue: 23540-1-AP	Numéro d'acquisition GenBank: BC146778	Méthode de purification: Purifié par affinité contre l'antigène
Taille: 150ul , Concentration: 600 µg/ml by Nanodrop;	Identification du gène (NCBI): 51585	Dilutions recommandées: WB 1:500-1:2000
Hôte: Lapin	Nom complet: PCF11, cleavage and polyadenylation factor subunit, homolog (S. cerevisiae)	
Isotype: IgG	MW calculé 1555 aa, 173 kDa	
Immunogen Catalog Number: AG20263	MW observés: 173 kDa	

Applications

Applications testées: WB, ELISA	Contrôles positifs: WB : cellules K-562, cellules HeLa
Demandes citées: ColP, WB	
Spécificité de l'espèce: Humain	
Espèces citées: Humain, souris	

Informations générales

In *Saccharomyces cerevisiae*, the cleavage/polyadenylation factor Pcf11 is a crucial regulatory factor required for recruiting polyadenylation machinery to elongating RNA polymerase II (RNAPII), and is necessary for correct transcriptional termination. Pcf11 (PCF11, cleavage and polyadenylation factor subunit, homolog (*S. cerevisiae*)), is a 1,555 amino acid nuclear protein that is a component of pre-mRNA cleavage complex II. It is suggested that Pcf11 is capable of promoting the dissociation of Pol II elongation complexes from DNA. Pcf11 contains a CTD-interaction domain that binds in a phospho-dependent manner to the heptad repeats within the RNA polymerase II CTD. The gene encoding Pcf11 is located on human chromosome 11, which houses over 1,400 genes and comprises nearly 4% of the human genome. Jervell and Lange-Nielsen syndrome, Jacobsen syndrome, Niemann-Pick disease, hereditary angioedema and Smith-Lemli-Opitz syndrome are associated with defects in genes that map to chromosome 11. This antibody is specific to the 173kd human PCF11 protein.

Publications notables

Autrice	Pubmed ID	Journal	Application
Jihae Shin	34244761	Nucleic Acids Res	WB
Geneva R LaForce	35139363	Neuron	ColP
Asya Khleborodova	27060432	Biochimie	WB

Stockage

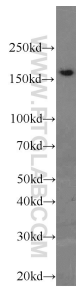
Stockage:
Stocker à -20°C. Stable pendant un an après l'expédition.
Tampon de stockage:
PBS avec azoture de sodium à 0,02 % et glycérol à 50 % pH 7,3
L'aliquotage n'est pas nécessaire pour le stockage à -20C

*** Les 20ul contiennent 0,1% de BSA.

For technical support and original validation data for this product please contact:
T: 1 (888) 4PTGLAB (1-888-478-4522) (toll free in USA), or 1(312) 455-8498 (outside USA)
E: proteintech@ptglab.com
W: ptglab.com

This product is exclusively available under Proteintech Group brand and is not available to purchase from any other manufacturer.

Données de validation sélectionnées



K-562 cells were subjected to SDS PAGE followed by western blot with 23540-1-AP (PCF11 antibody) at dilution of 1:1000 incubated at room temperature for 1.5 hours.