

À des fins de recherche uniquement

Anticorps Polyclonal de lapin anti-KGA/GAM/GAC



Numéro de catalogue: 23549-1-AP

Phare

2 Publications

Informations de base

Numéro de catalogue:

23549-1-AP

Taille:

150ul, Concentration: 750 µg/ml by Nanodrop and 493 µg/ml by Bradford method using BSA as the standard;

Hôte:

Lapin

Isotype:

IgG

Immunogen Catalog Number:

AG20354

Numéro d'acquisition GenBank:

BC038507

Identification du gène (NCBI):

2744

Nom complet:

glutaminase

MW calculé

669 aa, 73 kDa

MW observés:

58 kDa, 65 kDa, 83 kDa

Méthode de purification:

Purification par affinité contre l'antigène

Dilutions recommandées:

WB 1:500-1:1000

IP 0.5-4.0 ug for IP and 1:500-1:2000 for WB

IHC 1:20-1:200

IF 1:25-1:200

Applications

Applications testées:

IF, IHC, IP, WB, ELISA

Demandes citées:

IF, WB

Spécificité de l'espèce:

Humain, rat, souris

Espèces citées:

Humain

Remarque-IHC: il est suggéré de démasquer l'antigène avec un tampon de TE buffer pH 9,0; (*) A défaut, le démasquage de l'antigène peut être effectué avec un tampon citrate pH 6,0.

Contrôles positifs:

WB: cellules HEK-293, cellules HeLa, tissu cérébral de rat, tissu cérébral de souris, tissu hépatique de souris

IP: cellules HEK-293,

IHC: tissu rénal humain, tissu cérébral humain

IF: cellules HEK-293, cellules HeLa

Informations générales

GLS, also named as GLS1 and KIAA0838, belongs to the glutaminase family. It catalyzes the first reaction in the primary pathway for the renal catabolism of glutamine. Glutaminase-, glutamate-, and taurine-immunoreactive neurons develop neurofibrillary tangles in Alzheimer's disease. The glutaminase band in AA/C1 cells is more intense than in HT29 cells, in accordance with measurements of glutaminase activity, and had the same molecular mass of approx. 63 kDa (PMID:12408749). Ping Gao et al. (2009) determined that mitochondrial glutaminase expression (GLS, molecular mass of ~58 kDa) is increased ~10-fold in response to Myc. It also reveals a molecular weight of 83-84 kDa as a phosphate-dependent glutaminase (PMID:447624;7512428). GLS has 3 isoforms produced by alternative splicing and this antibody can recognize all the 3 isoforms (KGA, GAM, GAC) of GLS.

Publications notables

Autrice	Pubmed ID	Journal	Application
Bin Jiang	35381197	Mol Cell	WB, IF
M Ryan Smith	26774751	Redox Biol	WB

Stockage

Stockage:

Stocker à -20°C. Stable pendant un an après l'expédition.

Tampon de stockage:

PBS avec azoture de sodium à 0,02 % et glycérol à 50 % pH 7,3

L'aliquotage n'est pas nécessaire pour le stockage à -20C

*** Les 20ul contiennent 0,1% de BSA.

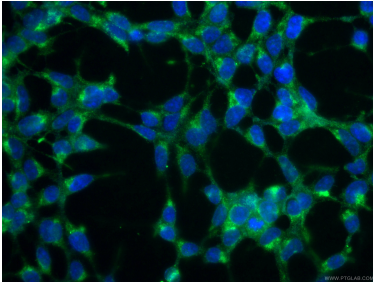
For technical support and original validation data for this product please contact:

T: 1 (888) 4PTGLAB (1-888-478-4522) (toll free in USA), or 1(312) 455-8498 (outside USA)

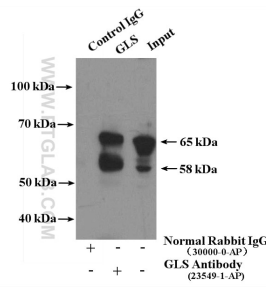
E: proteintech@ptglab.com
W: ptglab.com

This product is exclusively available under Proteintech Group brand and is not available to purchase from any other manufacturer.

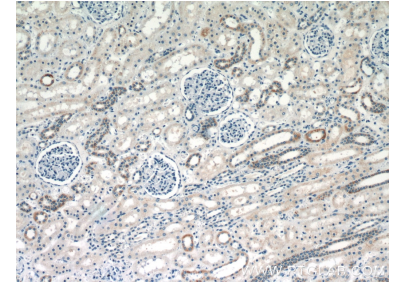
Données de validation sélectionnées



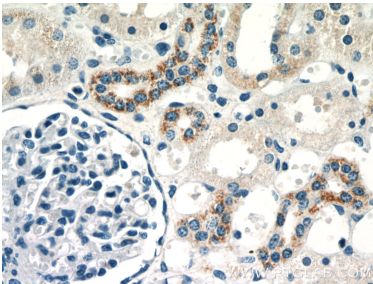
Immunofluorescent analysis of (-20°C Ethanol) fixed HEK-293 cells using 23549-1-AP (KGA/GAM/GAC antibody), at dilution of 1:200 and CoraLite®488-Conjugated AffiniPure Goat Anti-Rabbit IgG(H+L).



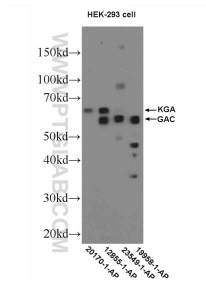
IP Result of anti-KGA/GAM/GAC (IP:23549-1-AP, 4ug; Detection:23549-1-AP 1:1000) with HEK-293 cells lysate 1200ug.



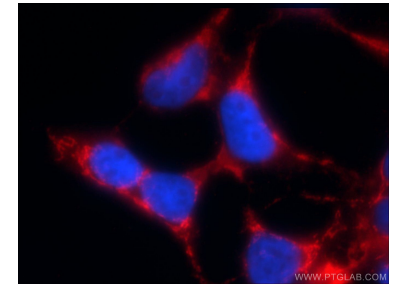
Immunohistochemical analysis of paraffin-embedded human kidney slide using 23549-1-AP (KGA/GAM/GAC antibody at dilution of 1:50.



Immunohistochemical analysis of paraffin-embedded human kidney slide using 23549-1-AP (KGA/GAM/GAC antibody at dilution of 1:50.



HEK-293 cells were subjected to SDS PAGE followed by western blot with 23549-1-AP (KGA/GAM/GAC antibody at dilution of 1:600 incubated at 4 degree celsius over night.



Immunofluorescent analysis of HEK-293 cells using 23549-1-AP (KGA/GAM/GAC antibody) at dilution of 1:25 and Rhodamine-Goat anti-Rabbit IgG.