

À des fins de recherche uniquement

Anticorps Polyclonal de lapin anti-LBP



Numéro de catalogue: 23559-1-AP

4 Publications

Informations de base

Numéro de catalogue:
23559-1-AP

Taille:
150ul, Concentration: 700 µg/ml by Nanodrop and 387 µg/ml by Bradford method using BSA as the standard;

Hôte:
Lapin

Isotype:
IgG

Immunogen Catalog Number:
AG13485

Numéro d'acquisition GenBank:
BC022256

Identification du gène (NCBI):
3929

Nom complet:
lipopolysaccharide binding protein

MW calculé
481 aa, 53 kDa

MW observés:
53-60 kDa

Méthode de purification:
Purification par affinité contre l'antigène

Dilutions recommandées:
WB 1:500-1:2000
IP 0.5-4.0 ug for IP and 1:500-1:1000 for WB

Applications

Applications testées:
IP, WB, ELISA

Demandes citées:
IHC, WB

Spécificité de l'espèce:
Humain, rat, souris

Espèces citées:
bovin, Humain, rat, souris

Contrôles positifs:

WB : tissu hépatique de souris,

IP : tissu hépatique de souris,

Informations générales

LBP (lipopolysaccharide-binding protein) is an acute-phase protein, predominantly synthesized by hepatocytes. It is present in normal serum at concentrations of 5 to 10 µg/ml, rising up to 200 µg/ml 24 h after induction of an acute-phase response. LBP binds to the lipid A moiety of bacterial lipopolysaccharides (LPS), a glycolipid present in the outer membrane of all Gram-negative bacteria, and acts as an affinity enhancer for CD14, facilitating its association with LPS. (PMID: 9665271; 11598069)

Publications notables

Autrice	Pubmed ID	Journal	Application
Takahisa Watahiki	36290662	Antioxidants (Basel)	WB
Timothy A Reinhardt	32439417	J Proteomics	WB
Min Zhang	35069505	Front Microbiol	WB

Stockage

Stockage:

Stocker à -20°C. Stable pendant un an après l'expédition.

Tampon de stockage:

PBS avec azoture de sodium à 0,02 % et glycérol à 50 % pH 7,3

L'aliquotage n'est pas nécessaire pour le stockage à -20C

*** Les 20ul contiennent 0,1% de BSA.

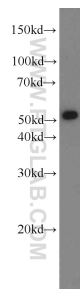
For technical support and original validation data for this product please contact:

T: 1 (888) 4PTGLAB (1-888-478-4522) (toll free in USA), or 1(312) 455-8498 (outside USA)

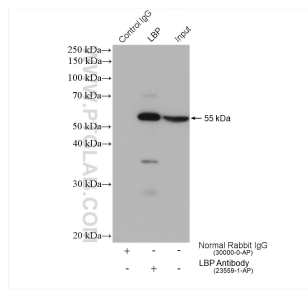
E: proteintech@ptglab.com
W: ptglab.com

This product is exclusively available under Proteintech Group brand and is not available to purchase from any other manufacturer.

Données de validation sélectionnées



mouse liver tissue were subjected to SDS PAGE followed by western blot with 23559-1-AP (LBP antibody) at dilution of 1:1000 incubated at room temperature for 1.5 hours.



IP result of anti-LBP(IP:23559-1-AP, 4ug; Detection:23559-1-AP 1:500) with mouse liver tissue lysate 3040 ug.