

À des fins de recherche uniquement

Anticorps Polyclonal de lapin anti-VSX1



Numéro de catalogue: 23566-1-AP

Informations de base

Numéro de catalogue: 23566-1-AP	Numéro d'acquisition GenBank: BC126228	Méthode de purification: Purification par affinité contre l'antigène
Taille: 150ul , Concentration: 700 µg/ml by Nanodrop and 380 µg/ml by Bradford method using BSA as the standard;	Identification du gène (NCBI): 30813	Dilutions recommandées: WB 1:200-1:1000 IF 1:50-1:500
Hôte: Lapin	Nom complet: visual system homeobox 1	
Isotype: IgG	MW calculé: 365 aa, 38 kDa	
Immunogen Catalog Number: AG19222	MW observés: 70 kDa	

Applications

Applications testées: IF, WB, ELISA	Contrôles positifs: WB : tissu oculaire de souris, cellules Raji
Spécificité de l'espèce: Humain, souris	IF : tissu oculaire de souris,

Informations générales

VSX1 (visual system homeobox 1) is a member of the Vsx1 group of vertebrate paired-like homeodomain transcription factors locating to the nucleus. Mutations in the VSX1 gene in keratoconus have been reported in many studies. VSX1 is considered important in ocular development and is particularly involved in the developing cornea (PMID:21139977). And previous studies have identified that Vsx1 participates in regulating retinal progenitor proliferation, differentiation and functional maintenance of bipolar cells (PMID:25150888). It was demonstrated that Vsx1 express in embryonic craniofacial, adult corneal, and adult retinal cDNA libraries. VSX1 mRNA has been found in the outer tier of the inner nuclear layer of the human retina and the cornea (PMID: 21139977).

Stockage

Stockage:
Stocker à -20°C. Stable pendant un an après l'expédition.
Tampon de stockage:
PBS avec azoture de sodium à 0,02 % et glycérol à 50 % pH 7,3
L'aliquotage n'est pas nécessaire pour le stockage à -20C

***** Les 20ul contiennent 0,1% de BSA.**

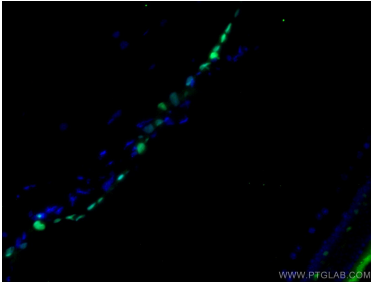
For technical support and original validation data for this product please contact:

T: 1 (888) 4PTGLAB (1-888-478-4522) (toll free in USA), or 1(312) 455-8498 (outside USA)

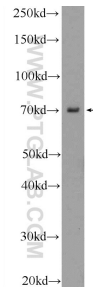
E: proteintech@ptglab.com
W: ptglab.com

This product is exclusively available under Proteintech Group brand and is not available to purchase from any other manufacturer.

Données de validation sélectionnées



Immunofluorescent analysis of (4% PFA) fixed mouse eye tissue using 23566-1-AP (VSX1 antibody) at dilution of 1:100 and CoraLite488-Conjugated AffiniPure Goat Anti-Rabbit IgG(H+L).



mouse eye tissue were subjected to SDS PAGE followed by western blot with 23566-1-AP (VSX1 Antibody) at dilution of 1:300 incubated at room temperature for 1.5 hours.