

À des fins de recherche uniquement

Anticorps Polyclonal de lapin anti-NFKB1,p105



Numéro de catalogue: 23576-1-AP

2 Publications

Informations de base

Numéro de catalogue: 23576-1-AP	Numéro d'acquisition GenBank: BC051765	Méthode de purification: Purification par affinité contre l'antigène
Taille: 150ul , Concentration: 1200 µg/ml by Nanodrop and 540 µg/ml by Bradford method using BSA as the standard;	Identification du gène (NCBI): 4790	Dilutions recommandées: WB 1:500-1:2000 IHC 1:20-1:200 IF 1:20-1:200
Hôte: Lapin	Nom complet: nuclear factor of kappa light polypeptide gene enhancer in B-cells 1	
Isotype: IgG	MW calculé: 105 kDa	
Immunogen Catalog Number: AG20297	MW observés: 105 kDa	

Applications

Applications testées:

IF, IHC, WB, ELISA

Demandes citées:

chIP, WB

Spécificité de l'espèce:

Humain

Espèces citées:

Humain

Remarque-IHC: il est suggéré de démasquer l'antigène avec un tampon de TE buffer pH 9,0; (*) A défaut, 'le démasquage de l'antigène peut être 'effectué avec un tampon citrate pH 6,0.

Contrôles positifs:

WB : cellules SH-SY5Y, cellules HeLa, cellules Jurkat, cellules K-562, cellules Raji

IHC : tissu placentaire humain,

IF : cellules SH-SY5Y,

Informations générales

NFkB is a pleiotropic transcription factor which is present in almost all cell types and is involved in many biological processes such as inflammation, immunity, differentiation, cell growth, tumorigenesis and apoptosis. NFkB is activated by various intra- and extracellular stimuli such as cytokines, oxidant free radicals, ultraviolet irradiation, and bacterial or viral products. NFkB is a family of transcription factors that consists of homo- and heterodimers of NFkB1/p50 and RelA/p65 subunits, and controls a variety of cellular events including development and immune responses. All members share a conserved amino terminus domain that includes dimerization, nuclear localization, and DNA binding regions, and a carboxy terminal transactivation domain. Serines 529 and 536 in the transactivation domain of RelA/p65 are phosphorylated in response to several stimuli including phorbol ester, IL1 alpha and TNF alpha as mediated by IKB kinase and p38 MAPK. Phosphorylation of serines 529 and 536 is critical for RelA/p65 transcriptional activity. Activated NFkB translocates into the nucleus and stimulates the expression of genes involved in a wide variety of biological functions. Inappropriate activation of NFkB has been associated with a number of inflammatory diseases while persistent inhibition of NFkB leads to inappropriate immune cell development or delayed cell growth. NFkB1 appears to have dual functions such as cytoplasmic retention of attached NF-kappa-B proteins by p105 and generation of p50 by a cotranslational processing. This antibody can bind p105 isoforms of NFkB1.

Publications notables

Autrice	Pubmed ID	Journal	Application
Meng Wang	31197610	In Vitro Cell Dev Biol Anim	chIP
Dong Yang	29484114	Oncotarget	WB

Stockage

Stockage:

Stocker à -20°C. Stable pendant un an après l'expédition.

Tampon de stockage:

PBS avec azoture de sodium à 0,02 % et glycérol à 50 % pH 7,3

L'aliquotage n'est pas nécessaire pour le stockage à -20C

*** Les 20ul contiennent 0,1% de BSA.

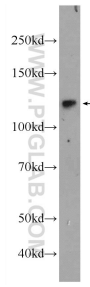
For technical support and original validation data for this product please contact:

T: 1 (888) 4PTGLAB (1-888-478-4522) (toll free in USA), or 1(312) 455-8498 (outside USA)

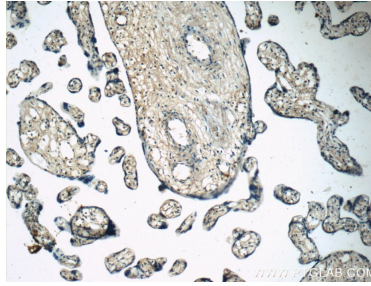
E: proteintech@ptglab.com
W: ptglab.com

This product is exclusively available under Proteintech Group brand and is not available to purchase from any other manufacturer.

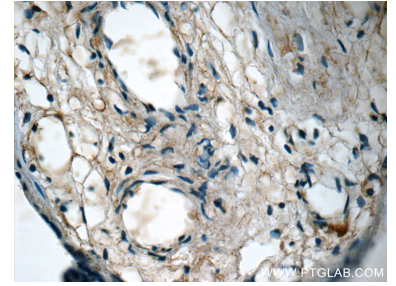
Données de validation sélectionnées



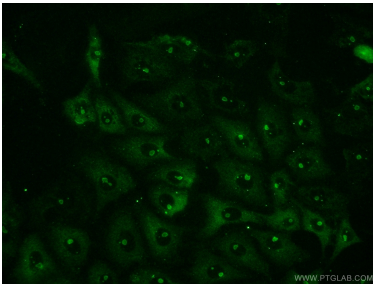
SH-SY5Y cells were subjected to SDS PAGE followed by western blot with 23576-1-AP (NFKB1,p105 Antibody) at dilution of 1:1000 incubated at room temperature for 1.5 hours.



Immunohistochemical analysis of paraffin-embedded human placenta slide using 23576-1-AP (NFKB1 Antibody) at dilution of 1:50 (under 10x lens).



Immunohistochemical analysis of paraffin-embedded human placenta slide using 23576-1-AP (NFKB1,p105 Antibody) at dilution of 1:50 (under 40x lens).



Immunofluorescent analysis of (-20°C Ethanol) fixed SH-SY5Y cells using 23576-1-AP (NFKB1,p105 antibody) at dilution of 1:50 and Alexa Fluor 488-conjugated AffiniPure Goat Anti-Rabbit IgG(H+L).