

À des fins de recherche uniquement

Anticorps Polyclonal de lapin anti-MUC1/CA15-3 C-terminal



Numéro de catalogue: 23614-1-AP

Phare

7 Publications

Informations de base

Numéro de catalogue:

23614-1-AP

Taille:

150ul, Concentration: 750 µg/ml by Nanodrop;

Hôte:

Lapin

Isotype:

IgG

Immunogen Catalog Number:

AG20366

Numéro d'acquisition GenBank:

BC120975

Identification du gène (NCBI):

4582

Nom complet:

mucin 1, cell surface associated

MW calculé

1264 aa, 123 kDa

MW observés:

23-28 kDa

Méthode de purification:

Purification par affinité contre l'antigène

Dilutions recommandées:

WB 1:500-1:2000

IHC 1:50-1:500

Applications

Applications testées:

FC, IHC, WB, ELISA

Demandes citées:

FC, IHC, WB

Spécificité de l'espèce:

Humain

Espèces citées:

Humain, souris

Contrôles positifs:

WB : cellules DU 145, cellules BxPC-3, cellules MCF-7, cellules PC-3

IHC : tissu de cancer du pancréas humain, tissu d'amygdalite humaine, tissu de cancer du sein humain, tissu de tumeur ovarienne humaine

Remarque-IHC: il est suggéré de démasquer l'antigène avec un tampon de TE buffer pH 9,0; (*) À défaut, le démasquage de l'antigène peut être effectué avec un tampon citrate pH 6,0.

Informations générales

MUC1 is a type I transmembrane glycoprotein expressed by various epithelial cells of female reproductive tract, lung, breast, kidney, stomach, and pancreas. MUC1 is transcribed as a large precursor gene product, and upon translation, is cleaved in the endoplasmic reticulum, yielding two subunits: the large extracellular N-terminal subunit (MUC1-N, about 120-200 kDa) and the small cytoplasmic C-terminal subunit (MUC1-C, about 23-30 kDa). Among the known mucins, MUC1 is best studied and plays crucial roles in regulating many cellular properties, including cell proliferation, apoptosis, adhesion, and invasion. MUC1 is overexpressed in a wide range of human epithelial malignancies. This antibody was raised against the C-terminal region of human MUC1, thus it recognizes the 23-30 kDa cytoplasmic MUC1.

Publications notables

Autrice	Pubmed ID	Journal	Application
Xiaoyi Gao	34632781	ACS Sens	WB,FC
Xinxing Wang	36439512	Front Oncol	WB,IHC
Wenwen Wang	33758177	Cell Death Discov	WB

Stockage

Stockage:

Stocker à -20°C. Stable pendant un an après l'expédition.

Tampon de stockage:

PBS avec azoture de sodium à 0,02 % et glycérol à 50 % pH 7,3

L'aliquotage n'est pas nécessaire pour le stockage à -20°C

*** Les 20ul contiennent 0,1% de BSA.

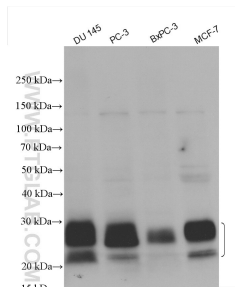
For technical support and original validation data for this product please contact:

T: 1 (888) 4PTGLAB (1-888-478-4522) (toll free in USA), or 1(312) 455-8498 (outside USA)

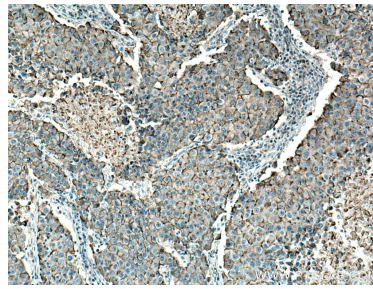
E: proteintech@ptglab.com
W: ptglab.com

This product is exclusively available under Proteintech Group brand and is not available to purchase from any other manufacturer.

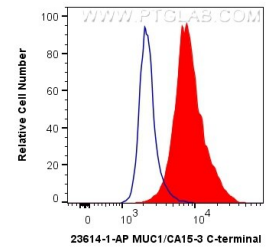
Données de validation sélectionnées



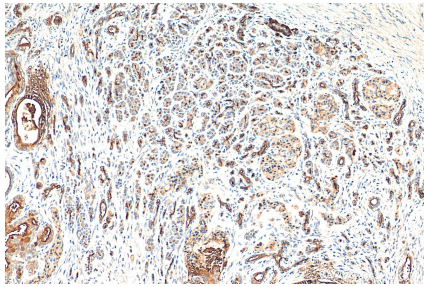
Various lysates were subjected to SDS PAGE followed by western blot with 23614-1-AP (MUC1/CA15-3 C-terminal antibody) at dilution of 1:1000 incubated at room temperature for 1.5 hours.



Immunohistochemical analysis of paraffin-embedded human breast cancer tissue slide using 23614-1-AP (MUC1/CA15-3 C-terminal antibody) at dilution of 1:200 (under 10x lens).



1×10^6 MCF-7 cells were intracellularly stained with 0.4 μ g Anti-Human MUC1/CA15-3 C-terminal (23614-1-AP) and CoraLite@488-Conjugated AffiniPure Goat Anti-Rabbit IgG(H+L) at dilution 1:1000 (red), or 0.4 μ g Control Antibody. Cells were fixed with 4% PFA and permeabilized with Flow Cytometry Perm Buffer (PF00011-C).



Immunohistochemical analysis of paraffin-embedded human pancreas cancer tissue slide using 23614-1-AP (MUC1/CA15-3 C-terminal antibody) at dilution of 1:200 (under 10x lens). Proteolytic pre-treatment mediated antigen retrieval with Tris-EDTA buffer (pH 9.0).