

À des fins de recherche uniquement

# Anticorps Polyclonal de lapin anti-P15RS



Numéro de catalogue: 23652-1-AP

Phare

3 Publications

## Informations de base

Numéro de catalogue:

23652-1-AP

Taille:

150ul, Concentration: 800 µg/ml by Nanodrop;

Hôte:

Lapin

Isotype:

IgG

Immunogen Catalog Number:

AG20409

Numéro d'acquisition GenBank:

BC010136

Identification du gène (NCBI):

55197

Nom complet:

regulation of nuclear pre-mRNA domain containing 1A

MW calculé

312 aa, 36 kDa

MW observés:

36 kDa

Méthode de purification:

Purification par affinité contre l'antigène

Dilutions recommandées:

WB 1:1000-1:6000

IF 1:50-1:500

## Applications

Applications testées:

IF, WB, ELISA

Demandes citées:

IF, IHC, IP, WB

Spécificité de l'espèce:

Humain, souris

Espèces citées:

Humain

Contrôles positifs:

WB : cellules A431, cellules HEK-293, cellules Jurkat, cellules L02, tissu de muscle squelettique de souris, tissu hépatique de souris

IF : cellules HeLa,

## Informations générales

RPRD1A is upregulated in cells overexpressing cyclin-dependent kinase inhibitor p15(INK4b) and may have a role in cell cycle regulation. It contains a RAR domain that is involved in regulation of nuclear pre-mRNA, which suggests that P15RS may act as a nuclear regulation protein [PMID:12470661]. It also interacts with phosphorylated C-terminal heptapeptide repeat domain (CTD) of the largest RNA polymerase II subunit POLR2A, and participates in dephosphorylation of the CTD. Besides, RPRD1A regulates cell cycle genes and attenuates WNT signaling [PMID: 20739273], and acts as a negative regulator of cyclin-D1 (CCND1) and cyclin-E (CCNE1) in the cell cycle [PMID: 22231121].

## Publications notables

Autrice	Pubmed ID	Journal	Application
Xiaoman Chen	30207732	Mol Pharm	WB
Simona Cugusi	36121223	Mol Cell Biol	WB
Xiaofan Feng	34921137	Cell Death Dis	IP,WB,IHC,IF

## Stockage

Stockage:

Stocker à -20°C. Stable pendant un an après l'expédition.

Tampon de stockage:

PBS avec azoture de sodium à 0,02 % et glycérol à 50 % pH 7,3

L'aliquotage n'est pas nécessaire pour le stockage à -20C

\*\*\* Les 20ul contiennent 0,1% de BSA.

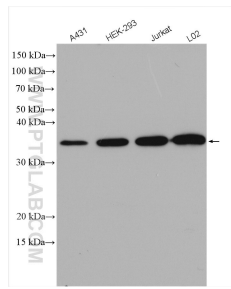
For technical support and original validation data for this product please contact:

T: 1 (888) 4PTGLAB (1-888-478-4522) (toll free in USA), or 1(312) 455-8498 (outside USA)

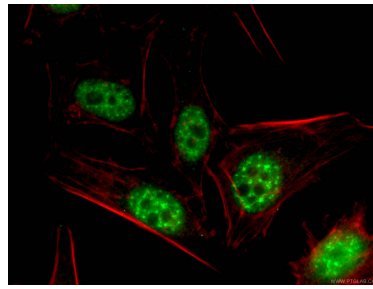
E: proteintech@ptglab.com  
W: ptglab.com

This product is exclusively available under Proteintech Group brand and is not available to purchase from any other manufacturer.

## Données de validation sélectionnées



Various lysates were subjected to SDS PAGE followed by western blot with 23652-1-AP (P15RS antibody) at dilution of 1:3000 incubated at room temperature for 1.5 hours.



Immunofluorescent analysis of (4% PFA) fixed HeLa cells using 23652-1-AP (P15RS antibody), at dilution of 1:200 and CoraLite@488-Conjugated AffiniPure Goat Anti-Rabbit IgG(H+L).