

À des fins de recherche uniquement

Anticorps Polyclonal de lapin anti- RSK2



Numéro de catalogue: 23762-1-AP

Phare

8 Publications

Informations de base

Numéro de catalogue:

23762-1-AP

Taille:

150ul, Concentration: 700 µg/ml by Nanodrop and 360 µg/ml by Bradford method using BSA as the standard;

Hôte:

Lapin

Isotype:

IgG

Immunogen Catalog Number:

AG20620

Numéro d'acquisition GenBank:

BC096301

Identification du gène (NCBI):

6197

Nom complet:

ribosomal protein S6 kinase, 90kDa, polypeptide 3

MW calculé

740 aa, 84 kDa

MW observés:

84 kDa

Méthode de purification:

Purification par affinité contre l'antigène

Dilutions recommandées:

WB 1:2000-1:5000

IP 0.5-4.0 ug for IP and 1:1000-1:8000 for WB

IHC 1:20-1:200

Applications

Applications testées:

IHC, IP, WB, ELISA

Demandes citées:

WB

Spécificité de l'espèce:

Humain, souris

Espèces citées:

Humain

Remarque-IHC: il est suggéré de démasquer l'antigène avec un tampon de TE buffer pH 9.0; (*) A défaut, 'le démasquage de l'antigène peut être effectué avec un tampon citrate pH 6,0.

Contrôles positifs:

WB : cellules NIH/3T3, cellules HepG2, cellules K-562, cellules MCF-7

IP : cellules K-562,

IHC : tissu rénal humain,

Informations générales

RPS6KA3 (Ribosomal protein S6 kinase alpha-3) is also named as ISPK1, MAPKAPK1B, RSK2 and belongs to the protein kinase superfamily. It localizes at the kinetochores under spindle checkpoint conditions, and during mitosis, associated with the centrosomes, the spindle and at the mid-body (PMID:20383198). It is required for EGF activated phosphorylation of histone H3, which may cause chromatin remodeling and facilitate gene transcription and maybe playing an essential regulatory role in protein synthesis during cell proliferation.

Publications notables

Autrice	Pubmed ID	Journal	Application
Ying Zhang	29074436	Int J Biochem Cell Biol	WB
Daisuke Watanabe	31756944	Cancers (Basel)	WB
Zhengzheng Su	29341215	Prostate	WB

Stockage

Stockage:

Stocker à -20°C. Stable pendant un an après l'expédition.

Tampon de stockage:

PBS avec azoture de sodium à 0,02 % et glycérol à 50 % pH 7,3

L'aliquotage n'est pas nécessaire pour le stockage à -20C

*** Les 20ul contiennent 0,1% de BSA.

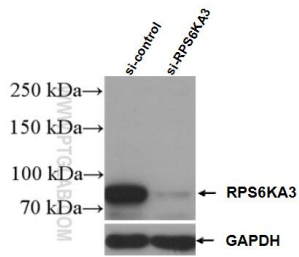
For technical support and original validation data for this product please contact:

T: 1 (888) 4PTGLAB (1-888-478-4522) (toll free in USA), or 1(312) 455-8498 (outside USA)

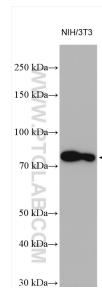
E: proteintech@ptglab.com
W: ptglab.com

This product is exclusively available under Proteintech Group brand and is not available to purchase from any other manufacturer.

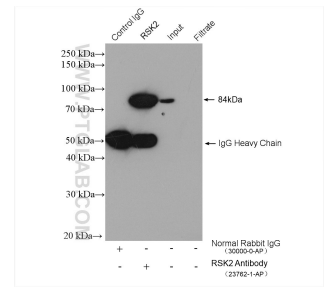
Données de validation sélectionnées



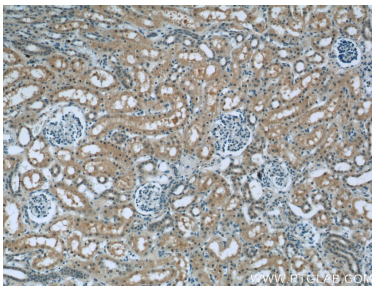
WB result of RSK2 antibody (23762-1-AP; 1:2000; incubated at room temperature for 1.5 hours) with sh-Control and sh-RSK2 transfected K-562 cells.



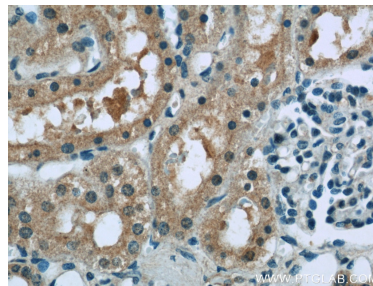
NIH/3T3 cells were subjected to SDS PAGE followed by western blot with 23762-1-AP (RSK2 antibody) at dilution of 1:4000 incubated at room temperature for 1.5 hours.



IP result of anti-RSK2 (IP:23762-1-AP, 4ug; Detection:23762-1-AP 1:4000) with K-562 cells lysate 3680 ug.



Immunohistochemical analysis of paraffin-embedded human kidney tissue slide using 23762-1-AP (RSK2 antibody at dilution of 1:50 (under 10x lens).



Immunohistochemical analysis of paraffin-embedded human kidney tissue slide using 23762-1-AP (RSK2 antibody at dilution of 1:50 (under 40x lens).