

À des fins de recherche uniquement

Anticorps Polyclonal de lapin anti-MME,CD10



Numéro de catalogue:23782-1-AP

Informations de base

Numéro de catalogue: 23782-1-AP	Numéro d'acquisition GenBank: BC101632	Méthode de purification: Purification par affinité contre l'antigène
Taille: 150ul , Concentration: 700 µg/ml by Nanodrop and 440 µg/ml by Bradford method using BSA as the standard;	Identification du gène (NCBI): 4311	Dilutions recommandées: IHC 1:20-1:200 IF 1:50-1:500
Hôte: Lapin	Nom complet: membrane metallo-endopeptidase	
Isotype: IgG	MW calculé 750 aa, 86 kDa	
Immunogen Catalog Number: AG20634		

Applications

Applications testées: FC, IF, IHC, ELISA	Contrôles positifs: IHC : tissu rénal humain, tissu de carcinome à cellules rénales humain IF : tissu rénal humain,
Spécificité de l'espèce: Humain	
Remarque-IHC: il est suggéré de démasquer l'antigène avec un tampon de TE buffer pH 9,0; (*) À défaut, 'le démasquage de l'antigène peut être 'effectué avec un tampon citrate pH 6,0.	

Informations générales

MME is also names as neprilysin,CALLA,NEP,SFE,CD10 and belongs to the peptidase M13 family.It is a glycoprotein that is particularly abundant in kidney, where it is present on the brush border of proximal tubules and on glomerular epithelium.CD10 has been considered a useful marker in the diagnosis of renal carcinomas, because of its expression in clear cell and papillary renal cell carcinomas and its absence in chromophobe renal cell carcinomas(PMID:15286660).

Stockage

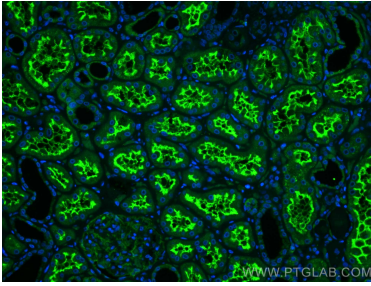
Stockage:
Stocker à -20°C. Stable pendant un an après l'expédition.
Tampon de stockage:
PBS avec azoture de sodium à 0,02 % et glycérol à 50 % pH 7,3
L'aliquotage n'est pas nécessaire pour le stockage à -20C

*** Les 20ul contiennent 0,1% de BSA.

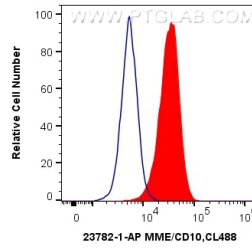
For technical support and original validation data for this product please contact:
T: 1 (888) 4PTGLAB (1-888-478-4522) (toll free in USA), or 1(312) 455-8498 (outside USA)
E: proteintech@ptglab.com
W: ptglab.com

This product is exclusively available under Proteintech Group brand and is not available to purchase from any other manufacturer.

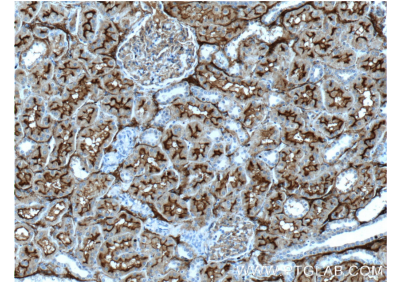
Données de validation sélectionnées



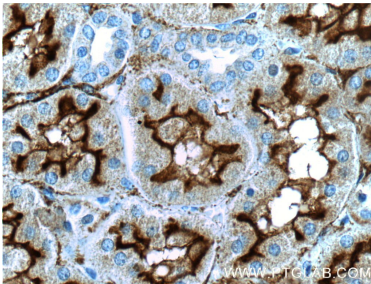
Immunofluorescent analysis of (4% PFA) fixed human kidney tissue using MME,CD10 antibody (23782-1-AP) at dilution of 1:200 and CoraLite®488-Conjugated AffiniPure Goat Anti-Rabbit IgG(H+L).



1X10⁶ Jurkat cells were intracellularly stained with 0.4 ug Anti-Human MME,CD10 (23782-1-AP) and CoraLite®488-Conjugated AffiniPure Goat Anti-Rabbit IgG(H+L) at dilution 1:1000 (red), or 0.4 ug Isotype Control. Cells were fixed with 4% PFA and permeabilized with Flow Cytometry Perm Buffer (PF00011-C).



Immunohistochemical analysis of paraffin-embedded human kidney tissue slide using 23782-1-AP (CD10,MME Antibody) at dilution of 1:200 (under 10x lens).



Immunohistochemical analysis of paraffin-embedded human kidney tissue slide using 23782-1-AP (CD10,MME Antibody) at dilution of 1:200 (under 40x lens).