

À des fins de recherche uniquement

# Anticorps Polyclonal de lapin anti- PRELP



Numéro de catalogue: 23783-1-AP

## Informations de base

<b>Numéro de catalogue:</b> 23783-1-AP	<b>Numéro d'acquisition GenBank:</b> BC032498	<b>Méthode de purification:</b> Purification par affinité contre l'antigène
<b>Taille:</b> 150ul, Concentration: 500 µg/ml by Nanodrop and 240 µg/ml by Bradford method using BSA as the standard;	<b>Identification du gène (NCBI):</b> 5549	<b>Dilutions recommandées:</b> WB 1:500-1:2000
<b>Hôte:</b> Lapin	<b>Nom complet:</b> proline/arginine-rich end leucine-rich repeat protein	
<b>Isotype:</b> IgG	<b>MW calculé</b> 44 kDa	
<b>Immunogen Catalog Number:</b> AG20656	<b>MW observés:</b> 44 kDa	

## Applications

<b>Applications testées:</b> WB, ELISA	<b>Contrôles positifs:</b> WB : cellules L02, cellules SMMC-7721
<b>Spécificité de l'espèce:</b> Humain	

## Informations générales

PRELP (proline/arginine-rich end leucine-rich repeat protein), also known as MST161, MSTP161, prolargin, or SLRR2A, belongs to the class II subfamily of the small leucine-rich proteoglycan (SLRP) family. PRELP is a small leucine-rich proteoglycan (SLRP), which binds collagen to basement membranes or cartilage as a matrix protein. PRELP has prognostic value and regulates cell proliferation and migration in hepatocellular carcinoma, may serve as a potential prognostic marker and a treatment target against HCC progression (PMID: 33033521).

## Stockage

**Stockage:**  
Stocker à -20°C. Stable pendant un an après l'expédition.  
**Tampon de stockage:**  
PBS avec azoture de sodium à 0,02 % et glycérol à 50 % pH 7,3  
L'aliquotage n'est pas nécessaire pour le stockage à -20C

**\*\*\* Les 20ul contiennent 0,1% de BSA.**

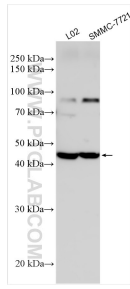
For technical support and original validation data for this product please contact:

T: 1 (888) 4PTGLAB (1-888-478-4522) (toll free in USA), or 1(312) 455-8498 (outside USA)

E: proteintech@ptglab.com  
W: ptglab.com

This product is exclusively available under Proteintech Group brand and is not available to purchase from any other manufacturer.

## Données de validation sélectionnées



Various lysates were subjected to SDS PAGE followed by western blot with 23783-1-AP (PRELP antibody) at dilution of 1:1000 incubated at room temperature for 1.5 hours.