

À des fins de recherche uniquement

# Anticorps Polyclonal de lapin anti-PLXNB1



Numéro de catalogue: 23795-1-AP

5 Publications

## Informations de base

Numéro de catalogue:

23795-1-AP

Taille:

150ul, Concentration: 700 µg/ml by Nanodrop;

Hôte:

Lapin

Isotype:

IgG

Immunogen Catalog Number:

AG20719

Numéro d'acquisition GenBank:

BC146793

Identification du gène (NCBI):

5364

Nom complet:

plexin B1

MW calculé

2135 aa, 232 kDa

MW observés:

210 kDa

Méthode de purification:

Purifié par affinité contre l'antigène

Dilutions recommandées:

WB 1:200-1:1000

IHC 1:50-1:500

## Applications

Applications testées:

FC, IHC, WB, ELISA

Demandes citées:

FC, IF, IHC, WB

Spécificité de l'espèce:

Humain, souris

Espèces citées:

Humain, rat, souris

Contrôles positifs:

WB : tissu cérébral de souris,

IHC : tissu rénal humain, tissu cérébral humain

**Remarque-IHC: il est suggéré de démasquer l'antigène avec un tampon de TE buffer pH 9,0; (\*) À défaut, 'le démasquage de l'antigène peut être 'effectué avec un tampon citrate pH 6,0.**

## Informations générales

Semaphorins, originally identified as axon guidance molecules, have also been implicated in angiogenesis, immunoregulation, and cancer (PMID: 16584533). Plexins are main receptors for semaphorins and are thought to control many of the functional effects of semaphorins. PLXNB1 is one of the three plexin-B family members. It is a high-affinity receptor for semaphorin 4D (SEMA4D). Interaction of SEMA4D and PLXNB1 has important physiologic effects in the immune and nervous systems, and is also involved in tumor progression, especially in tumor angiogenesis (PMID: 20858260).

## Publications notables

Autrice	Pubmed ID	Journal	Application
Lu Liu	35794581	J Transl Med	WB
Bradley A Welch	35170806	J Neuroendocrinol	IF
Kun Wang	33490182	Ann Transl Med	WB

## Stockage

Stockage:

Stocker à -20°C. Stable pendant un an après l'expédition.

Tampon de stockage:

PBS avec azoture de sodium à 0,02 % et glycérol à 50 % pH 7,3

L'aliquotage n'est pas nécessaire pour le stockage à -20C

\*\*\* Les 20ul contiennent 0,1% de BSA.

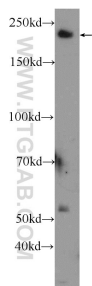
For technical support and original validation data for this product please contact:

T: 1 (888) 4PTGLAB (1-888-478-4522) (toll free in USA), or 1(312) 455-8498 (outside USA)

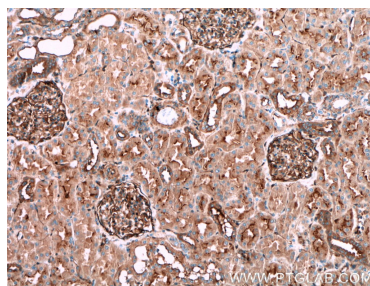
E: [proteintech@ptglab.com](mailto:proteintech@ptglab.com)  
W: [ptglab.com](http://ptglab.com)

This product is exclusively available under Proteintech Group brand and is not available to purchase from any other manufacturer.

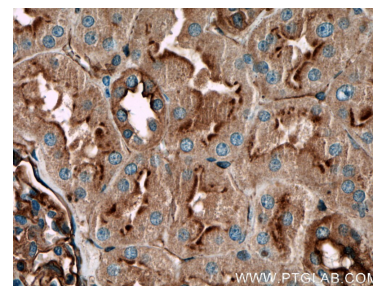
## Données de validation sélectionnées



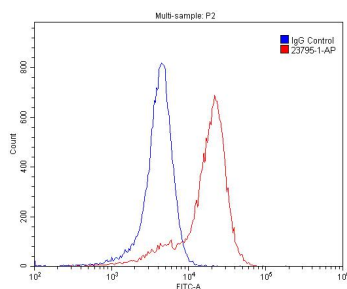
mouse brain tissue were subjected to SDS PAGE followed by western blot with 23795-1-AP (PLXNB1 Antibody) at dilution of 1:300 incubated at room temperature for 1.5 hours.



Immunohistochemical analysis of paraffin-embedded human kidney tissue slide using 23795-1-AP (PLXNB1 antibody) at dilution of 1:200 (under 10x lens).



Immunohistochemical analysis of paraffin-embedded human kidney tissue slide using 23795-1-AP (PLXNB1 antibody) at dilution of 1:200 (under 40x lens).



1X10<sup>6</sup> SH-SY5Y cells were stained with 0.2ug PLXNB1 antibody (23795-1-AP, red) and control antibody (blue). Fixed with 4% PFA blocked with 3% BSA (30 min). Alexa Fluor 488-conjugated AffiniPure Goat Anti-Rabbit IgG(H+L) with dilution 1:1500.