

À des fins de recherche uniquement

Anticorps Polyclonal de lapin anti-FATE1



Numéro de catalogue: 23809-1-AP

Informations de base

Numéro de catalogue: 23809-1-AP	Numéro d'acquisition GenBank: BC022064	Méthode de purification: Purification par affinité contre l'antigène
Taille: 150ul , Concentration: 600 µg/ml by Nanodrop and 360 µg/ml by Bradford method using BSA as the standard;	Identification du gène (NCBI): 89885	Dilutions recommandées: WB 1:500-1:1000
Hôte: Lapin	Nom complet: fetal and adult testis expressed 1	
Isotype: IgG	MW calculé 21 kDa	
Immunogen Catalog Number: AG20757	MW observés: 21 kDa	

Applications

Applications testées: WB, ELISA	Contrôles positifs: WB : tissu testiculaire humain, tissu testiculaire de souris
Spécificité de l'espèce: Humain, souris	

Informations générales

FATE1, also named as Fetal and adult testis expressed transcript protein, express predominantly in testis, with some expression in lung, heart, kidney, adrenal gland and whole brain. FATE1 might represent a novel target gene of SF-1 in testicular differentiation and germ cell development. FATE1 also involves in the regulation of a wide variety of cellular processes, including the cell cycle, immune responses, signaling cascades and developmental events through target proteins, such as cyclins, cyclin-dependent kinase inhibitors.

Stockage

Stockage:
Stocker à -20°C. Stable pendant un an après l'expédition.
Tampon de stockage:
PBS avec azoture de sodium à 0,02 % et glycérol à 50 % pH 7,3
L'aliquotage n'est pas nécessaire pour le stockage à -20C

***** Les 20ul contiennent 0,1% de BSA.**

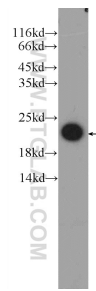
For technical support and original validation data for this product please contact:

T: 1 (888) 4PTGLAB (1-888-478-4522) (toll free in USA), or 1(312) 455-8498 (outside USA)

E: proteintech@ptglab.com
W: ptglab.com

This product is exclusively available under Proteintech Group brand and is not available to purchase from any other manufacturer.

Données de validation sélectionnées



human testis tissue were subjected to SDS PAGE followed by western blot with 23809-1-AP (FATE1 Antibody) at dilution of 1:800 incubated at room temperature for 1.5 hours.