

À des fins de recherche uniquement

# Anticorps Polyclonal de lapin anti-IREB2



Numéro de catalogue: 23829-1-AP

Phare

11 Publications

## Informations de base

<b>Numéro de catalogue:</b> 23829-1-AP	<b>Numéro d'acquisition GenBank:</b> BC017880	<b>Méthode de purification:</b> Purification par affinité contre l'antigène
<b>Taille:</b> 150ul, Concentration: 200 µg/ml by Nanodrop and 133 µg/ml by Bradford method using BSA as the standard;	<b>Identification du gène (NCBI):</b> 3658	<b>Dilutions recommandées:</b> WB 1:200-1:1000 IHC 1:50-1:500 IF 1:20-1:200
<b>Hôte:</b> Lapin	<b>Nom complet:</b> iron-responsive element binding protein 2	
<b>Isotype:</b> IgG	<b>MW calculé:</b> 105 kDa	
<b>Immunogen Catalog Number:</b> AG20653	<b>MW observés:</b> 90-105 kDa	

## Applications

### Applications testées:

IF, IHC, WB, ELISA

### Demandes citées:

CoIP, IF, IHC, WB

### Spécificité de l'espèce:

Humain, souris

### Espèces citées:

Humain, rat, souris

**Remarque-IHC: il est suggéré de démasquer l'antigène avec un tampon de TE buffer pH 9,0; (\*) A défaut, 'le démasquage de l'antigène peut être effectué avec un tampon citrate pH 6,0.**

### Contrôles positifs:

**WB** : tissu pulmonaire de souris, cellules A549, cellules PC-13

**IHC** : tissu splénique humain, tissu de cancer du côlon humain

**IF** : cellules A549,

## Informations générales

IREB2 is an RNA-binding protein that acts to regulate iron levels in the cells by regulating the translation and stability of mRNAs that affect iron homeostasis under conditions when iron is depleted. When iron levels are low, this protein binds to iron-responsive elements (IRES), stem-loop structures located either in the 5' or 3' UTRs. Binding to the 5' UTR represses translation, while binding to the 3' UTR inhibits mRNA degradation. When iron is found in the cell, this protein is degraded in a F-box and leucine rich repeat protein 5-dependent manner.

## Publications notables

Autrice	Pubmed ID	Journal	Application
Yujia Li	32947011	Free Radic Biol Med	WB,IF,CoIP
Eva Riechert	33979607	Cell Rep	WB
Haipeng Cheng	34175430	Biochim Biophys Acta Mol Basis Dis	WB

## Stockage

### Stockage:

Stocker à -20°C. Stable pendant un an après l'expédition.

### Tampon de stockage:

PBS avec azoture de sodium à 0,02 % et glycérol à 50 % pH 7,3

L'aliquotage n'est pas nécessaire pour le stockage à -20C

\*\*\* Les 20ul contiennent 0,1% de BSA.

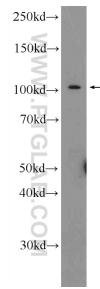
For technical support and original validation data for this product please contact:

T: 1 (888) 4PTGLAB (1-888-478-4522) (toll free in USA), or 1(312) 455-8498 (outside USA)

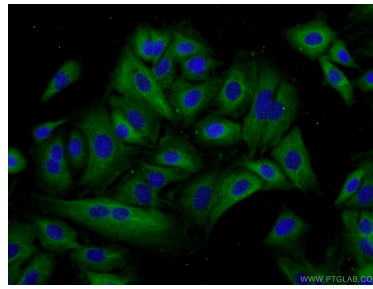
E: proteintech@ptglab.com  
W: ptglab.com

This product is exclusively available under Proteintech Group brand and is not available to purchase from any other manufacturer.

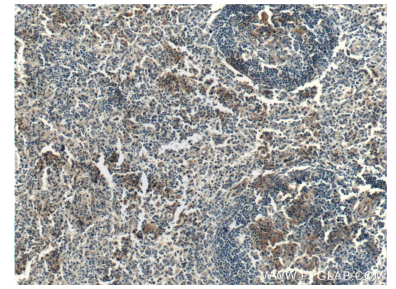
## Données de validation sélectionnées



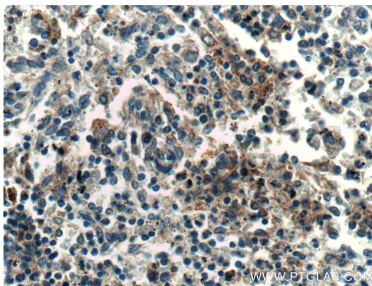
mouse lung tissue were subjected to SDS PAGE followed by western blot with 23829-1-AP (IREB2 Antibody) at dilution of 1:300 incubated at room temperature for 1.5 hours.



Immunofluorescent analysis of A549 cells using 23829-1-AP (IREB2 antibody) at dilution of 1:50 and Alexa Fluor 488-conjugated AffiniPure Goat Anti-Rabbit IgG(H+L).



Immunohistochemical analysis of paraffin-embedded human spleen tissue slide using 23829-1-AP (IREB2 antibody) at dilution of 1:200 (under 10x lens).



Immunohistochemical analysis of paraffin-embedded human spleen tissue slide using 23829-1-AP (IREB2 antibody) at dilution of 1:200 (under 40x lens).