

À des fins de recherche uniquement

Anticorps Polyclonal de lapin anti-CEP55



Numéro de catalogue: 23891-1-AP

Phare

11 Publications

Informations de base

Numéro de catalogue:
23891-1-AP

Taille:
150ul, Concentration: 1000 µg/ml by
Nanodrop and 420 µg/ml by Bradford
method using BSA as the standard;

Hôte:
Lapin

Isotype:
IgG

Immunogen Catalog Number:
AG20940

Numéro d'acquisition GenBank:
BC008947

Identification du gène (NCBI):
55165

Nom complet:
centrosomal protein 55kDa

MW calculé
54 kDa

MW observés:
47-55 kDa

Méthode de purification:
Purifié par affinité contre l'antigène

Dilutions recommandées:
WB 1:500-1:2000
IP 0.5-4.0 ug for IP and 1:500-1:1000
for WB
IHC 1:20-1:200

Applications

Applications testées:
IHC, IP, WB, ELISA

Demandes citées:
IF, IHC, IP, WB

Spécificité de l'espèce:
Humain, rat, souris

Espèces citées:
Humain

Remarque-IHC: il est suggéré de démasquer l'antigène avec un tampon de TE buffer pH 9,0; (*) A défaut, le démasquage de l'antigène peut être effectué avec un tampon citrate pH 6,0.

Contrôles positifs:

WB : cellules HEK-293, cellules HeLa, cellules Jurkat, tissu testiculaire de rat, tissu testiculaire de souris, tissu testiculaire humain

IP : tissu testiculaire de souris,

IHC : tissu testiculaire humain,

Informations générales

CEP55, also named as C10orf3 and URCC6, is a 55 kDa protein which located in the centrosome in interphase cells and recruited to the midbody during cytokinesis, is essential for completion of cell abscission. It plays a role in mitotic exit and cytokinesis. CEP55 has two isoforms with the MW of 47 and 55 kDa.

Publications notables

Autrice	Pubmed ID	Journal	Application
Zwei Tu	36096781	BMC Cancer	WB
Zi Ye	32565973	Oncol Lett	IHC
Kun Gao	29743530	Cell Death Dis	WB,IP,IF

Stockage

Stockage:

Stocker à -20°C. Stable pendant un an après l'expédition.

Tampon de stockage:

PBS avec azoture de sodium à 0,02 % et glycérol à 50 % pH 7,3

L'aliquotage n'est pas nécessaire pour le stockage à -20C

*** Les 20ul contiennent 0,1% de BSA.

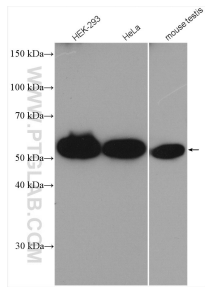
For technical support and original validation data for this product please contact:

T: 1 (888) 4PTGLAB (1-888-478-4522) (toll free in USA), or 1(312) 455-8498 (outside USA)

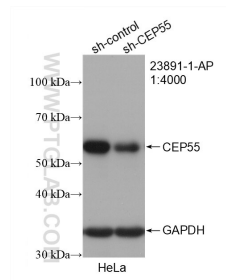
E: proteintech@ptglab.com
W: ptglab.com

This product is exclusively available under Proteintech Group brand and is not available to purchase from any other manufacturer.

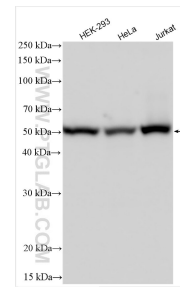
Données de validation sélectionnées



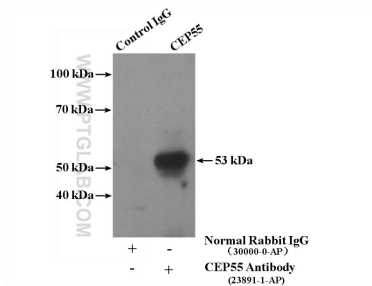
Various lysates were subjected to SDS PAGE followed by western blot with 23891-1-AP (CEP55 antibody) at dilution of 1:1000 incubated at room temperature for 1.5 hours.



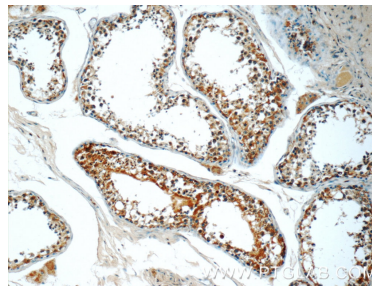
WB result of CEP55 antibody (23891-1-AP; 1:4000; incubated at room temperature for 1.5 hours) with sh-Control and sh-CEP55 transfected HeLa cells.



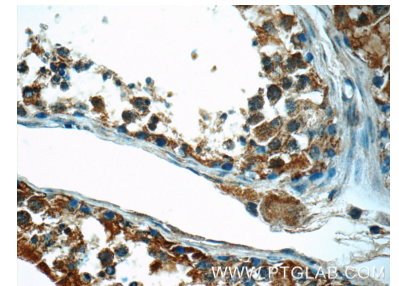
Various lysates were subjected to SDS PAGE followed by western blot with 23891-1-AP (CEP55 antibody) at dilution of 1:4000 incubated at room temperature for 1.5 hours.



IP Result of anti-CEP55 (IP:23891-1-AP, 4ug; Detection:23891-1-AP 1:500) with mouse testis tissue lysate 4000ug.



Immunohistochemical analysis of paraffin-embedded human testis tissue slide using 23891-1-AP (CEP55 Antibody) at dilution of 1:50 (under 10x lens).



Immunohistochemical analysis of paraffin-embedded human testis tissue slide using 23891-1-AP (CEP55 Antibody) at dilution of 1:50 (under 40x lens).